



Product datasheet

Anti-PKA R2/PKR2 antibody ab236855

4 Images

Overview

Product name	Anti-PKA R2/PKR2 antibody
Description	Rabbit polyclonal to PKA R2/PKR2
Host species	Rabbit
Tested applications	Suitable for: WB, IHC-P, ICC/IF
Species reactivity	Reacts with: Human
Immunogen	<p>Recombinant fragment corresponding to Human PKA R2/PKR2 aa 43-205. Sequence:</p> <p>ARAPASVLPAAATPRQSLGHPPPEPGPDRVADAKGDSSES EEDEDLEVPVPS RFNRRVSVCAETYNPDEEEEDTDPRIHPKTDEQRCRLQ EACKDILLFKN LDQEQLSQVLDAMFERVKADEHVIDQGDDGDNFYVIERG TYDILVTKDN QTRSVGQYDNRGS</p> <p>Database link: P13861</p> <p style="text-align: right;"> Run BLAST with  Run BLAST with</p>
Positive control	WB: HeLa, MCF7 and PC-3 whole cell lysates. IHC-P: Human lymph node and glioma tissue. ICC/IF: HepG2 cells.
General notes	<p>This product was previously labelled as PKA R2</p> <p>Reproducibility is key to advancing scientific discovery and accelerating scientists' next breakthrough.</p> <p>Abcam is leading the way with our range of recombinant antibodies, knockout-validated antibodies and knockout cell lines, all of which support improved reproducibility.</p> <p>We are also planning to innovate the way in which we present recommended applications and species on our product datasheets, so that only applications & species that have been tested in our own labs, our suppliers or by selected trusted collaborators are covered by our Abpromise™ guarantee.</p> <p>In preparation for this, we have started to update the applications & species that this product is Abpromise guaranteed for.</p> <p>We are also updating the applications & species that this product has been “predicted to work with,” however this information is not covered by our Abpromise guarantee.</p>

Applications & species from publications and Abreviews that have not been tested in our own labs or in those of our suppliers are not covered by the Abpromise guarantee.

Please check that this product meets your needs before purchasing. If you have any questions, special requirements or concerns, please send us an inquiry and/or contact our Support team ahead of purchase. Recommended alternatives for this product can be found below, as well as customer reviews and Q&As.

Properties

Form	Liquid
Storage instructions	Shipped at 4°C. Store at +4°C short term (1-2 weeks). Upon delivery aliquot. Store at -20°C long term. Avoid freeze / thaw cycle.
Storage buffer	pH: 7.40 Constituents: 50% Glycerol (glycerin, glycerine), PBS, 0.03% Proclin 300
Purity	Protein G purified
Purification notes	Purity >95%
Clonality	Polyclonal
Isotype	IgG

Applications

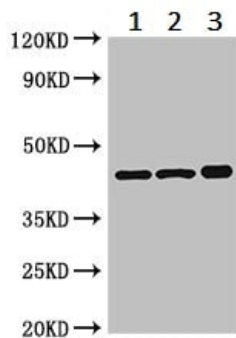
Our [Abpromise guarantee](#) covers the use of **ab236855** in the following tested applications.

The application notes include recommended starting dilutions; optimal dilutions/concentrations should be determined by the end user.

Application	Abreviews	Notes
WB		1/500 - 1/5000. Predicted molecular weight: 46 kDa.
IHC-P		1/20 - 1/200.
ICC/IF		1/50 - 1/200.

Target

Function	Regulatory subunit of the cAMP-dependent protein kinases involved in cAMP signaling in cells. Type II regulatory chains mediate membrane association by binding to anchoring proteins, including the MAP2 kinase.
Tissue specificity	Four types of regulatory chains are found: I-alpha, I-beta, II-alpha, and II-beta. Their expression varies among tissues and is in some cases constitutive and in others inducible.
Sequence similarities	Belongs to the cAMP-dependent kinase regulatory chain family. Contains 2 cyclic nucleotide-binding domains.
Post-translational modifications	Phosphorylated by the activated catalytic chain.
Cellular localization	Cytoplasm. Cell membrane. Colocalizes with PJA2 in the cytoplasm and the cell membrane.



Western blot - Anti-PKA R2/PKR2 antibody (ab236855)

All lanes : Anti-PKA R2/PKR2 antibody (ab236855) at 1/500 dilution

Lane 1 : HeLa (human epithelial cell line from cervix adenocarcinoma) whole cell lysate

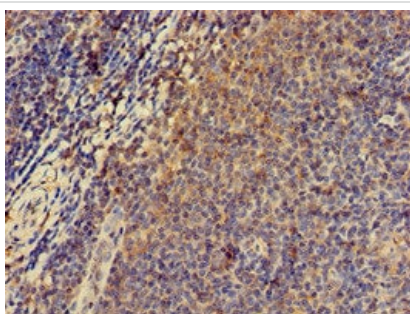
Lane 2 : MCF7 (human breast adenocarcinoma cell line) whole cell lysate

Lane 3 : PC-3 (human prostate adenocarcinoma cell line) whole cell lysate

Secondary

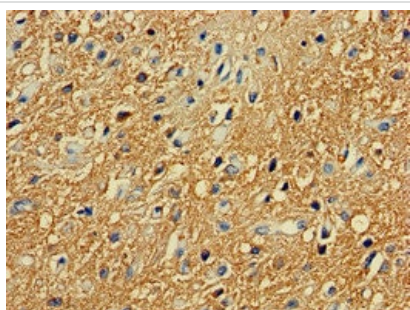
All lanes : Goat polyclonal to rabbit IgG at 1/50000 dilution

Predicted band size: 46 kDa



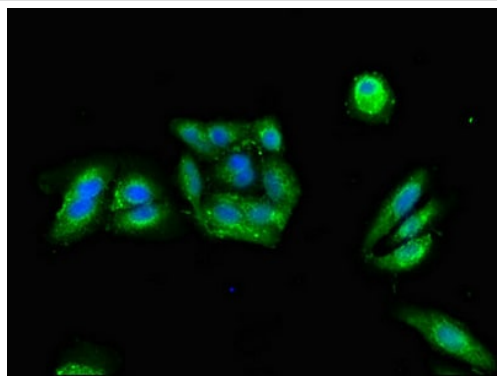
Immunohistochemistry (Formalin/PFA-fixed paraffin-embedded sections) - Anti-PKA R2/PKR2 antibody (ab236855)

Paraffin-embedded human lymph node tissue stained for PKA R2/PKR2 using ab236855 at 1/100 dilution in immunohistochemical analysis.



Immunohistochemistry (Formalin/PFA-fixed paraffin-embedded sections) - Anti-PKA R2/PKR2 antibody (ab236855)

Paraffin-embedded human glioma tissue stained for PKA R2/PKR2 using ab236855 at 1/100 dilution in immunohistochemical analysis.



Immunocytochemistry/ Immunofluorescence - Anti-PKA R2/PKR2 antibody (ab236855)

HepG2 (human liver hepatocellular carcinoma cell line) cells stained for PKA R2/PKR2 (green) using ab236855 at 1/100 dilution in ICC/IF. Secondary antibody is Alexa Fluor[®] 488-conjugated Goat Anti-Rabbit IgG (H+L).

Please note: All products are "FOR RESEARCH USE ONLY. NOT FOR USE IN DIAGNOSTIC PROCEDURES"

Our Abpromise to you: Quality guaranteed and expert technical support

- Replacement or refund for products not performing as stated on the datasheet
- Valid for 12 months from date of delivery
- Response to your inquiry within 24 hours

- We provide support in Chinese, English, French, German, Japanese and Spanish
- Extensive multi-media technical resources to help you
- We investigate all quality concerns to ensure our products perform to the highest standards

If the product does not perform as described on this datasheet, we will offer a refund or replacement. For full details of the Abpromise, please visit <https://www.abcam.com/abpromise> or contact our technical team.

Terms and conditions

- Guarantee only valid for products bought direct from Abcam or one of our authorized distributors