


## Product datasheet

# Anti-PKC delta (phospho T505) antibody ab60992

★★★★★ 2 Abreviews 3 Images

### Overview

---

<b>Product name</b>	Anti-PKC delta (phospho T505) antibody
<b>Description</b>	Rabbit polyclonal to PKC delta (phospho T505)
<b>Host species</b>	Rabbit
<b>Specificity</b>	Detects endogenous levels of PKC delta only when phosphorylated at threonine 505.
<b>Tested applications</b>	<b>Suitable for:</b> IHC-P, WB
<b>Species reactivity</b>	<b>Reacts with:</b> Mouse, Human <b>Predicted to work with:</b> Rat 
<b>Immunogen</b>	Synthetic peptide corresponding to Human PKC delta (internal sequence).
<b>Positive control</b>	WB: Extracts from NIH/3T3cells, treated with UV (15mins); C57BL/6 Mouse splenocytes cells.
<b>General notes</b>	<p>Reproducibility is key to advancing scientific discovery and accelerating scientists' next breakthrough.</p> <p>Abcam is leading the way with our range of recombinant antibodies, knockout-validated antibodies and knockout cell lines, all of which support improved reproducibility.</p> <p>We are also planning to innovate the way in which we present recommended applications and species on our product datasheets, so that only applications &amp; species that have been tested in our own labs, our suppliers or by selected trusted collaborators are covered by our Abpromise™ guarantee.</p> <p>In preparation for this, we have started to update the applications &amp; species that this product is Abpromise guaranteed for.</p> <p>We are also updating the applications &amp; species that this product has been “predicted to work with,” however this information is not covered by our Abpromise guarantee.</p> <p>Applications &amp; species from publications and Abreviews that have not been tested in our own labs or in those of our suppliers are not covered by the Abpromise guarantee.</p> <p>Please check that this product meets your needs before purchasing. If you have any questions, special requirements or concerns, please send us an inquiry and/or contact our Support team ahead of purchase. Recommended alternatives for this product can be found below, as well as customer reviews and Q&amp;As.</p>

### Properties

---

<b>Form</b>	Liquid
<b>Storage instructions</b>	Shipped at 4°C. Store at +4°C short term (1-2 weeks). Upon delivery aliquot. Store at -20°C long term. Avoid freeze / thaw cycle.
<b>Storage buffer</b>	pH: 7.40 Preservative: 0.02% Sodium azide Constituents: PBS, 50% Glycerol (glycerin, glycerine), 0.87% Sodium chloride  PBS without Mg <sup>2+</sup> and Ca <sup>2+</sup>
<b>Purity</b>	Immunogen affinity purified
<b>Purification notes</b>	The antibody against non-phosphopeptide was removed by chromatography using non-phosphopeptide corresponding to the phosphorylation site.
<b>Clonality</b>	Polyclonal
<b>Isotype</b>	IgG

## Applications

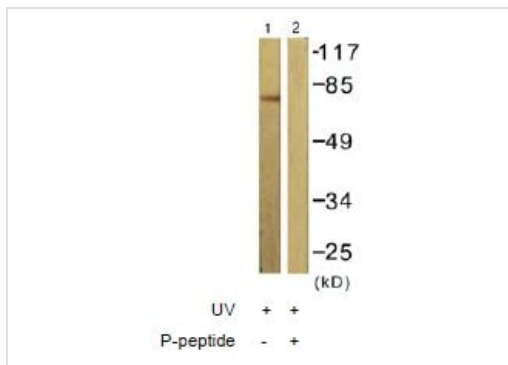
Our [Abpromise guarantee](#) covers the use of **ab60992** in the following tested applications.

The application notes include recommended starting dilutions; optimal dilutions/concentrations should be determined by the end user.

Application	Abreviews	Notes
IHC-P		1/50 - 1/100.
WB	★★★★☆	1/500 - 1/1000. Detects a band of approximately 77 kDa (predicted molecular weight: 77 kDa).

## Target

<b>Function</b>	This is calcium-independent, phospholipid-dependent, serine- and threonine-specific enzyme. PKC is activated by diacylglycerol which in turn phosphorylates a range of cellular proteins. PKC also serves as the receptor for phorbol esters, a class of tumor promoters. May play a role in antigen-dependent control of B-cell function. Phosphorylates MUC1 in the C-terminal and regulates the interaction between MUC1 and beta-catenin.
<b>Sequence similarities</b>	Belongs to the protein kinase superfamily. AGC Ser/Thr protein kinase family. PKC subfamily. Contains 1 AGC-kinase C-terminal domain. Contains 1 C2 domain. Contains 2 phorbol-ester/DAG-type zinc fingers. Contains 1 protein kinase domain.
<b>Domain</b>	The C1 domain, containing the phorbol ester/DAG-type region 1 (C1A) and 2 (C1B), is the diacylglycerol sensor. The C2 domain is a non-calcium binding domain. It binds proteins containing phosphotyrosine in a sequence-specific manner.
<b>Post-translational modifications</b>	Phosphorylated on Thr-507, within the activation loop. Autophosphorylated and/or phosphorylated. Although the Thr-507 phosphorylation occurs it is not a prerequisite for enzymatic activity.
<b>Cellular localization</b>	Cytoplasm. Membrane.



Western blot - Anti-PKC delta (phospho T505) antibody (ab60992)

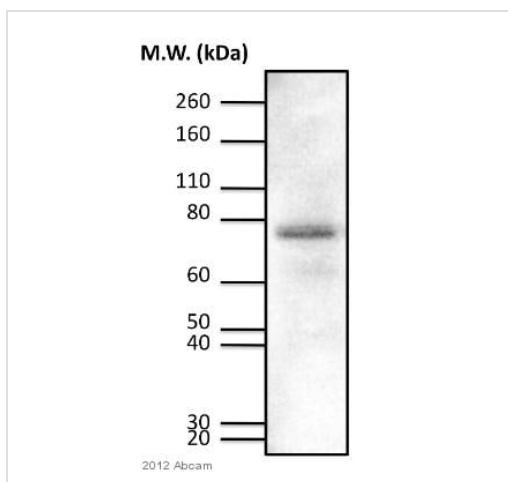
**All lanes :** Anti-PKC delta (phospho T505) antibody (ab60992) at 1/500 dilution

**Lane 1 :** Extracts from NIH/3T3cells, treated with UV (15mins).

**Lane 2 :** Extracts from NIH/3T3cells, treated with UV (15mins) with immunizing phosphopeptide.

**Predicted band size:** 77 kDa

**Observed band size:** 77 kDa



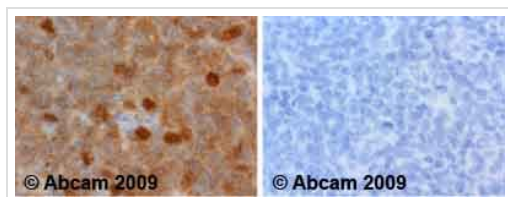
Western blot - Anti-PKC delta (phospho T505) antibody (ab60992)

Anti-PKC delta (phospho T505) antibody (ab60992) at 1/500 dilution + C57BL/6 Mouse splenocytes cells at 40 µg

**Secondary**

HRP Anti-rabbit IgG Goat (H&L) at 1/1000 dilution

**Predicted band size:** 77 kDa



Immunohistochemistry (Formalin/PFA-fixed paraffin-embedded sections) - Anti-PKC delta (phospho T505) antibody (ab60992)

**ab60992** staining human normal tonsil tissue. Staining is localised to cytoplasm.

Left panel: with primary antibody at 1 µg/ml. Right panel: isotype control.

Sections were stained using an automated system DAKO Autostainer Plus , at room temperature. Sections were rehydrated and antigen retrieved with the Dako 3-in-1 antigen retrieval buffer EDTA pH 9.0 in a DAKO PT Link. Slides were peroxidase blocked in 3% H2O2 in methanol for 10 minutes. They were then blocked with Dako Protein block for 10 minutes (containing casein 0.25% in PBS) then incubated with primary antibody for 20 minutes and detected with Dako Envision Flex amplification kit for 30 minutes. Colorimetric detection was completed with diaminobenzidine for 5 minutes. Slides were counterstained with Haematoxylin and coverslipped under DePeX. Please note that for manual staining we

recommend to optimize the primary antibody concentration and incubation time (overnight incubation), and amplification may be required.

**Please note:** All products are "FOR RESEARCH USE ONLY. NOT FOR USE IN DIAGNOSTIC PROCEDURES"

### **Our Abpromise to you: Quality guaranteed and expert technical support**

---

- Replacement or refund for products not performing as stated on the datasheet
- Valid for 12 months from date of delivery
- Response to your inquiry within 24 hours
  
- We provide support in Chinese, English, French, German, Japanese and Spanish
- Extensive multi-media technical resources to help you
- We investigate all quality concerns to ensure our products perform to the highest standards

If the product does not perform as described on this datasheet, we will offer a refund or replacement. For full details of the Abpromise, please visit <https://www.abcam.com/abpromise> or contact our technical team.

### **Terms and conditions**

---

- Guarantee only valid for products bought direct from Abcam or one of our authorized distributors