


Product datasheet

Anti-PKC theta/PRKCQ antibody ab227203

4 Images

Overview

Product name	Anti-PKC theta/PRKCQ antibody
Description	Rabbit polyclonal to PKC theta/PRKCQ
Host species	Rabbit
Tested applications	Suitable for: IHC-P, WB
Species reactivity	Reacts with: Mouse, Human Predicted to work with: Rat, Cow, Rhesus monkey 
Immunogen	Recombinant fragment within Human PKC theta/PRKCQ (internal sequence). The exact sequence is proprietary. Database link: Q04759
Positive control	WB: Jurkat whole cell lysate. IHC-P: Mouse muscle tissue; C2C12 xenograft tissue; human gastric cancer tissue.
General notes	This product was previously labelled as PKC theta

Properties

Form	Liquid
Storage instructions	Shipped at 4°C. Store at +4°C short term (1-2 weeks). Upon delivery aliquot. Store at -20°C long term. Avoid freeze / thaw cycle.
Storage buffer	Preservative: 0.01% Thimerosal (merthiolate) Constituents: 1% BSA, 20% Glycerol, PBS
Purity	Immunogen affinity purified
Clonality	Polyclonal
Isotype	IgG

Applications

Our [Abpromise guarantee](#) covers the use of **ab227203** in the following tested applications.

The application notes include recommended starting dilutions; optimal dilutions/concentrations should be determined by the end user.

Application	Abreviews	Notes
IHC-P		1/100 - 1/1000.
WB		1/500 - 1/3000. Predicted molecular weight: 82 kDa.

Target

Function

This is a calcium-independent, phospholipid-dependent, serine- and threonine-specific enzyme. Essential for T-cell receptor (TCR)-mediated T-cell activation, but is dispensable during TCR-dependent thymocyte development. Links the TCR signaling complex to the activation of NF-kappa-B in mature T lymphocytes. Required for interleukin-2 (IL2) production. PKC is activated by diacylglycerol which in turn phosphorylates a range of cellular proteins. PKC also serves as the receptor for phorbol esters, a class of tumor promoters.

Tissue specificity

Skeletal muscle, megakaryoblastic cells and platelets.

Sequence similarities

Belongs to the protein kinase superfamily. AGC Ser/Thr protein kinase family. PKC subfamily. Contains 1 AGC-kinase C-terminal domain. Contains 1 C2 domain. Contains 2 phorbol-ester/DAG-type zinc fingers. Contains 1 protein kinase domain.

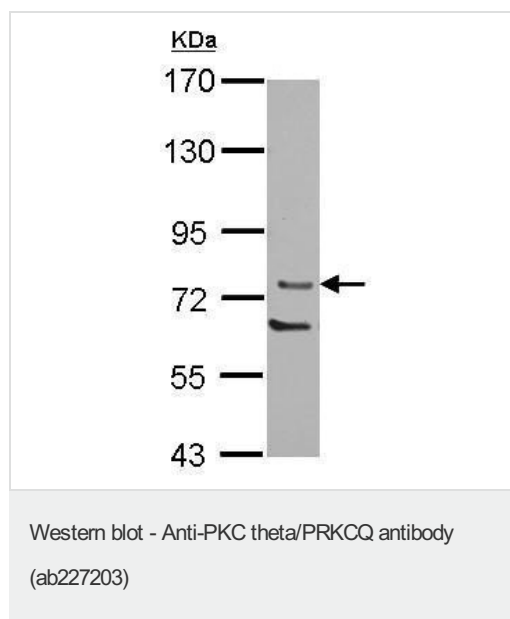
Domain

The C1 domain, containing the phorbol ester/DAG-type region 1 (C1A) and 2 (C1B), is the diacylglycerol sensor and the C2 domain is a non-calcium binding domain.

Post-translational modifications

Autophosphorylation at Thr-219 is required for targeting to the TCR and cellular function of PKC upon antigen receptor ligation.

Images



Anti-PKC theta/PRKCQ antibody (ab227203) at 1/1000 dilution + Jurkat (human T cell leukemia cell line from peripheral blood) whole cell lysate at 30 µg

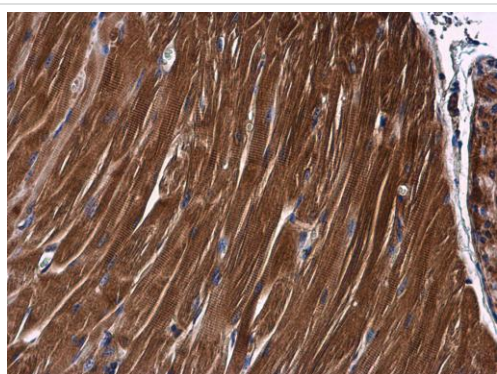
Secondary

HRP-conjugated anti-rabbit IgG

Developed using the ECL technique.

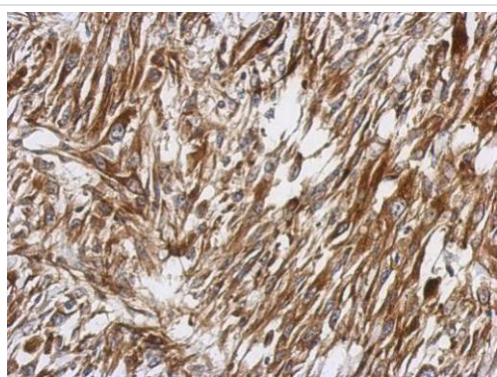
Predicted band size: 82 kDa

7.5% SDS PAGE



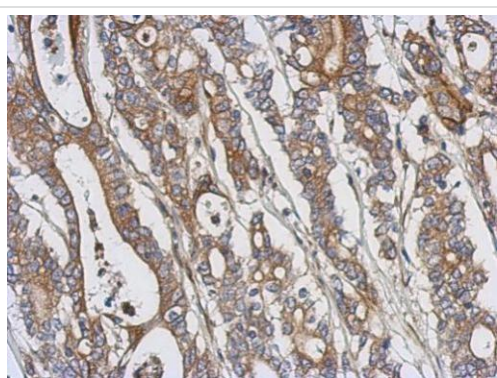
Immunohistochemistry (Formalin/PFA-fixed paraffin-embedded sections) - Anti-PKC theta/PRKCQ antibody (ab227203)

Paraffin-embedded mouse muscle tissue stained for PKC theta/PRKCQ with ab227203 at 1/500 dilution in immunohistochemical analysis.



Immunohistochemistry (Formalin/PFA-fixed paraffin-embedded sections) - Anti-PKC theta/PRKCQ antibody (ab227203)

Paraffin-embedded C2C12 (mouse myoblast cell line) xenograft tissue stained for PKC theta/PRKCQ with ab227203 at 1/500 dilution in immunohistochemical analysis.



Immunohistochemistry (Formalin/PFA-fixed paraffin-embedded sections) - Anti-PKC theta/PRKCQ antibody (ab227203)

Paraffin-embedded human gastric cancer tissue stained for PKC theta/PRKCQ with ab227203 at 1/500 dilution in immunohistochemical analysis.

Our Abpromise to you: Quality guaranteed and expert technical support

- Replacement or refund for products not performing as stated on the datasheet
- Valid for 12 months from date of delivery
- Response to your inquiry within 24 hours

- We provide support in Chinese, English, French, German, Japanese and Spanish
- Extensive multi-media technical resources to help you
- We investigate all quality concerns to ensure our products perform to the highest standards

If the product does not perform as described on this datasheet, we will offer a refund or replacement. For full details of the Abpromise, please visit <https://www.abcam.com/abpromise> or contact our technical team.

Terms and conditions

- Guarantee only valid for products bought direct from Abcam or one of our authorized distributors