

Product datasheet

Anti-PKC zeta (phospho T410) antibody ab194922

1 Image

Overview

Product name	Anti-PKC zeta (phospho T410) antibody
Description	Rabbit polyclonal to PKC zeta (phospho T410)
Host species	Rabbit
Tested applications	Suitable for: IHC-P
Species reactivity	Reacts with: Mouse, Rat, Human
Immunogen	Synthetic peptide corresponding to Human PKC zeta (phospho T410). Database link: Q05513
Positive control	Human lung carcinoma tissue.

Properties

Form	Liquid
Storage instructions	Shipped at 4°C. Store at +4°C short term (1-2 weeks). Upon delivery aliquot. Store at -20°C long term. Avoid freeze / thaw cycle.
Storage buffer	pH: 7.3 Preservative: 0.02% Sodium azide Constituents: 50% Glycerol, 49% PBS
Purity	Immunogen affinity purified
Clonality	Polyclonal
Isotype	IgG

Applications

Our [Abpromise guarantee](#) covers the use of **ab194922** in the following tested applications.

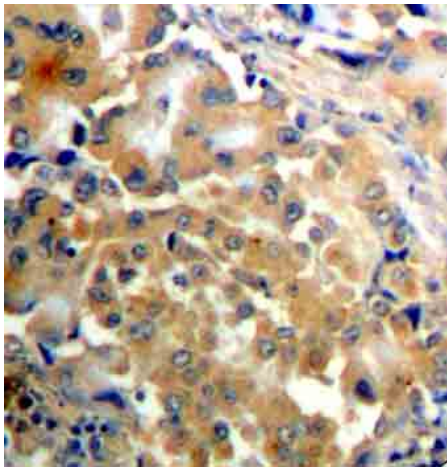
The application notes include recommended starting dilutions; optimal dilutions/concentrations should be determined by the end user.

Application	Abreviews	Notes
IHC-P		1/50 - 1/100.

Target

Function	<p>This is a calcium-independent, phospholipid-dependent, serine- and threonine-specific enzyme. Phosphorylates 'Ser-311' of RELA subunit of NF-kappa-B.</p> <p>PKC is activated by diacylglycerol which in turn phosphorylates a range of cellular proteins. PKC also serves as the receptor for phorbol esters, a class of tumor promoters. Subunit of a quaternary complex that plays a central role in epithelial cell polarization.</p>
Tissue specificity	Expressed in brain, and to a lesser extent in lung, kidney and testis.
Sequence similarities	<p>Belongs to the protein kinase superfamily. AGC Ser/Thr protein kinase family. PKC subfamily.</p> <p>Contains 1 AGC-kinase C-terminal domain.</p> <p>Contains 1 OPR domain.</p> <p>Contains 1 phorbol-ester/DAG-type zinc finger.</p> <p>Contains 1 protein kinase domain.</p>
Domain	<p>The OPR domain mediates mutually exclusive interactions with SQSTM1 and PARD6B.</p> <p>The C1 domain does not bind the diacylglycerol (DAG).</p>
Post-translational modifications	CDH5 is required for its phosphorylation at Thr-410.
Cellular localization	Cytoplasm. Endosome. Cell junction. In the retina, localizes in the terminals of the rod bipolar cells (By similarity). Associates with endosomes. Presence of KRIT1, CDH5 and RAP1B is required for its localization to the cell junction.

Images



Immunohistochemical analysis of paraffin-embedded Human lung carcinoma tissue labeling PKC zeta (phospho T410) with ab194922 at 1/50 dilution.

Immunohistochemistry (Formalin/PFA-fixed paraffin-embedded sections) - Anti-PKC zeta (phospho T410) antibody (ab194922)

Please note: All products are "FOR RESEARCH USE ONLY. NOT FOR USE IN DIAGNOSTIC PROCEDURES"

Our Abpromise to you: Quality guaranteed and expert technical support

- Replacement or refund for products not performing as stated on the datasheet

- Valid for 12 months from date of delivery
- Response to your inquiry within 24 hours

- We provide support in Chinese, English, French, German, Japanese and Spanish
- Extensive multi-media technical resources to help you
- We investigate all quality concerns to ensure our products perform to the highest standards

If the product does not perform as described on this datasheet, we will offer a refund or replacement. For full details of the Abpromise, please visit <https://www.abcam.com/abpromise> or contact our technical team.

Terms and conditions

- Guarantee only valid for products bought direct from Abcam or one of our authorized distributors