


Product datasheet

Anti-PKM antibody ab85542

2 Images

Overview

| | |
|----------------------------|--|
| Product name | Anti-PKM antibody |
| Description | Rabbit polyclonal to PKM |
| Host species | Rabbit |
| Tested applications | Suitable for: WB, IHC-P, IHC-Fr |
| Species reactivity | Reacts with: Human Predicted to work with: Mouse, Rat, Monkey  |
| Immunogen | Synthetic peptide corresponding to Human PKM aa 380-440 conjugated to keyhole limpet haemocyanin. Sequence: L IAREAEAAY HLQLFEELRR LAPITSDPTE ATAVGAVEASFKCCSGAIV LTKSGRSAHQ Run BLAST with Run BLAST with |
| Positive control | Tonsil tissue. |

Properties

| | |
|-----------------------------|--|
| Form | Liquid |
| Storage instructions | Shipped at 4°C. Upon delivery aliquot and store at -20°C. Avoid repeated freeze / thaw cycles. |
| Storage buffer | pH: 7.50 Constituents: 50% Glycerol, 0.87% Sodium chloride, 0.238% HEPES, 0.01% BSA |
| Purity | Immunogen affinity purified |
| Clonality | Polyclonal |
| Isotype | IgG |

Applications

Our [Abpromise guarantee](#) covers the use of **ab85542** in the following tested applications.

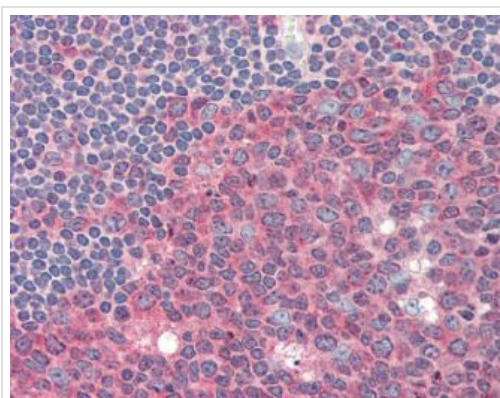
The application notes include recommended starting dilutions; optimal dilutions/concentrations should be determined by the end user.

| Application | Abreviews | Notes |
|-------------|-----------|---|
| WB | | 1/1000. Predicted molecular weight: 58 kDa. |
| IHC-P | | 1/100. |
| IHC-Fr | | 1/100. |

Target

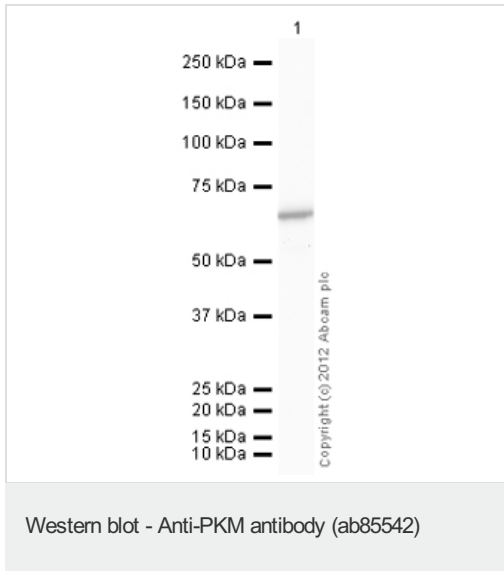
| | |
|---|---|
| Function | Glycolytic enzyme that catalyzes the transfer of a phosphoryl group from phosphoenolpyruvate (PEP) to ADP, generating ATP. Stimulates POU5F1-mediated transcriptional activation. Plays a general role in caspase independent cell death of tumor cells. The ratio between the highly active tetrameric form and nearly inactive dimeric form determines whether glucose carbons are channeled to biosynthetic processes or used for glycolytic ATP production. The transition between the 2 forms contributes to the control of glycolysis and is important for tumor cell proliferation and survival. |
| Tissue specificity | Specifically expressed in proliferating cells, such as embryonic stem cells, embryonic carcinoma cells, as well as cancer cells. |
| Pathway | Carbohydrate degradation; glycolysis; pyruvate from D-glyceraldehyde 3-phosphate: step 5/5. |
| Sequence similarities | Belongs to the pyruvate kinase family. |
| Post-translational modifications | ISGylated. Under hypoxia, hydroxylated by EGLN3. Acetylation at Lys-305 is stimulated by high glucose concentration, it decreases enzyme activity and promotes its lysosomal-dependent degradation via chaperone-mediated autophagy. FGFR1-dependent tyrosine phosphorylation is reduced by interaction with TRIM35. |
| Cellular localization | Cytoplasm. Nucleus. Translocates to the nucleus in response to different apoptotic stimuli. Nuclear translocation is sufficient to induce cell death that is caspase independent, isoform-specific and independent of its enzymatic activity. |

Images



ab85542, at 1/100 dilution, staining PKM in formalin-fixed paraffin-embedded human tonsil tissue by Immunohistochemistry.

Immunohistochemistry (Formalin/PFA-fixed paraffin-embedded sections) - Anti-PKM antibody (ab85542)



Please note: All products are "FOR RESEARCH USE ONLY. NOT FOR USE IN DIAGNOSTIC PROCEDURES"

Our Abpromise to you: Quality guaranteed and expert technical support

- Replacement or refund for products not performing as stated on the datasheet
- Valid for 12 months from date of delivery
- Response to your inquiry within 24 hours
- We provide support in Chinese, English, French, German, Japanese and Spanish
- Extensive multi-media technical resources to help you
- We investigate all quality concerns to ensure our products perform to the highest standards

If the product does not perform as described on this datasheet, we will offer a refund or replacement. For full details of the Abpromise, please visit <https://www.abcam.com/abpromise> or contact our technical team.

Terms and conditions

- Guarantee only valid for products bought direct from Abcam or one of our authorized distributors