


Product datasheet

Anti-PKR antibody - C-terminal ab226846

1 Image

Overview

Product name	Anti-PKR antibody - C-terminal
Description	Rabbit polyclonal to PKR - C-terminal
Host species	Rabbit
Tested applications	Suitable for: WB
Species reactivity	Reacts with: Human Predicted to work with: Chimpanzee 
Immunogen	Synthetic peptide within Human PKR (C terminal). The exact sequence is proprietary. Carrier-protein conjugated. Database link: P19525
Positive control	WB: A549, HCT 116 and NCI-H1299 whole cell extracts.

Properties

Form	Liquid
Storage instructions	Shipped at 4°C. Store at +4°C short term (1-2 weeks). Upon delivery aliquot. Store at -20°C long term. Avoid freeze / thaw cycle.
Storage buffer	pH: 7.00 Preservative: 0.025% Proclin Constituents: PBS, 1% BSA, 20% Glycerol
Purity	Immunogen affinity purified
Clonality	Polyclonal
Isotype	IgG

Applications

Our [Abpromise guarantee](#) covers the use of **ab226846** in the following tested applications.

The application notes include recommended starting dilutions; optimal dilutions/concentrations should be determined by the end user.

Application	Abreviews	Notes
WB		1/500 - 1/3000. Predicted molecular weight: 57,62 kDa.

Target

Function

Following activation by double-stranded RNA in the presence of ATP, the kinase becomes autophosphorylated and can catalyze the phosphorylation of the translation initiation factor EIF2S1, which leads to an inhibition of the initiation of protein synthesis. Double-stranded RNA is generated during the course of a viral infection.

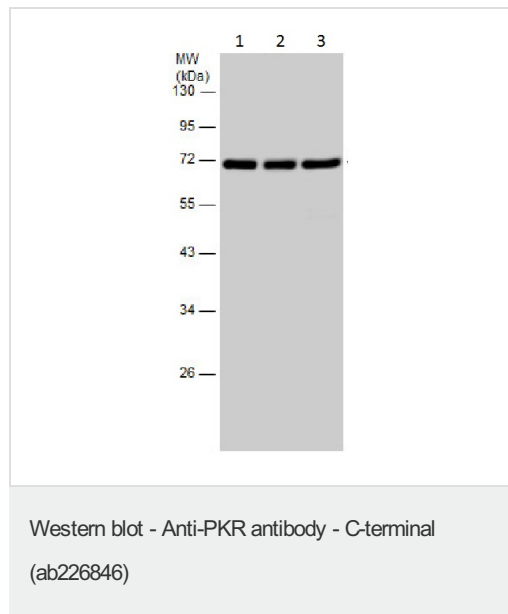
Sequence similarities

Belongs to the protein kinase superfamily. Ser/Thr protein kinase family. GCN2 subfamily. Contains 2 DRBM (double-stranded RNA-binding) domains. Contains 1 protein kinase domain.

Post-translational modifications

Autophosphorylated on several Ser and Thr residues. Autophosphorylation of Thr-451 is dependent on Thr-446 and is stimulated by dsRNA binding and dimerization. Autophosphorylation apparently leads to the activation of the kinase.

Images



All lanes : Anti-PKR antibody - C-terminal (ab226846) at 1/1000 dilution

Lane 1 : A549 (human lung carcinoma cell line) whole cell extract

Lane 2 : NCI-H1299 (human lung carcinoma cell line) whole cell extract

Lane 3 : HCT 116 (human colorectal carcinoma cell line) whole cell extract

Lysates/proteins at 30 µg per lane.

Predicted band size: 57,62 kDa

10% SDS-PAGE gel.

Please note: All products are "FOR RESEARCH USE ONLY. NOT FOR USE IN DIAGNOSTIC PROCEDURES"

Our Abpromise to you: Quality guaranteed and expert technical support

- Replacement or refund for products not performing as stated on the datasheet
- Valid for 12 months from date of delivery
- Response to your inquiry within 24 hours
- We provide support in Chinese, English, French, German, Japanese and Spanish
- Extensive multi-media technical resources to help you
- We investigate all quality concerns to ensure our products perform to the highest standards

If the product does not perform as described on this datasheet, we will offer a refund or replacement. For full details of the Abpromise, please visit <https://www.abcam.com/abpromise> or contact our technical team.

Terms and conditions

- Guarantee only valid for products bought direct from Abcam or one of our authorized distributors