

Product datasheet

Anti-PLA2G5 antibody ab23709

1 References 2 Images

Overview

<b>Product name</b>	Anti-PLA2G5 antibody
<b>Description</b>	Rabbit polyclonal to PLA2G5
<b>Host species</b>	Rabbit
<b>Tested applications</b>	<b>Suitable for:</b> IHC-P, WB
<b>Species reactivity</b>	<b>Reacts with:</b> Mouse, Rat, Human
<b>Immunogen</b>	Synthetic peptide corresponding to Mouse PLA2G5 aa 79-94 conjugated to keyhole limpet haemocyanin. Sequence: CAIRTQSYDY RYTNGL  <a href="#">Run BLAST with</a> <a href="#">Run BLAST with</a>
<b>Positive control</b>	Expressed in heart, lung, placenta and spleen. IHC-P: FFPE human heart tissue sections.
<b>General notes</b>	This product was previously labelled as Secretory phospholipase A2 Type V

Properties

<b>Form</b>	Liquid
<b>Storage instructions</b>	Shipped at 4°C. Upon delivery aliquot and store at -20°C. Avoid freeze / thaw cycles.
<b>Storage buffer</b>	pH: 7.40 Preservative: 0.02% Sodium azide Constituents: Tris buffered saline, 50% Glycerol, 0.05% BSA
<b>Purity</b>	Immunogen affinity purified
<b>Clonality</b>	Polyclonal
<b>Isotype</b>	IgG

Applications

Our [Abpromise guarantee](#) covers the use of **ab23709** in the following tested applications.

The application notes include recommended starting dilutions; optimal dilutions/concentrations should be determined by the end user.

Application	Abreviews	Notes
-------------	-----------	-------

IHC-P

WB

#### Application notes

WB: 1/500. Predicted molecular weight: 15 kDa (Human).

Not tested in other applications.

Optimal dilutions/concentrations should be determined by the end user.

#### Target

##### Function

PA2 catalyzes the calcium-dependent hydrolysis of the 2-acyl groups in 3-sn-phosphoglycerides. This isozyme hydrolyzes more efficiently L-alpha-1-palmitoyl-2-oleoyl phosphatidylcholine than L-alpha-1-palmitoyl-2-arachidonyl phosphatidylcholine, L-alpha-1-palmitoyl-2-arachidonyl phosphatidylethanolamine, or L-alpha-1-stearoyl-2-arachidonyl phosphatidylinositol. May be involved in the production of lung surfactant, the remodeling or regulation of cardiac muscle.

##### Tissue specificity

Heart, placenta and less abundantly, in lung.

##### Sequence similarities

Belongs to the phospholipase A2 family.

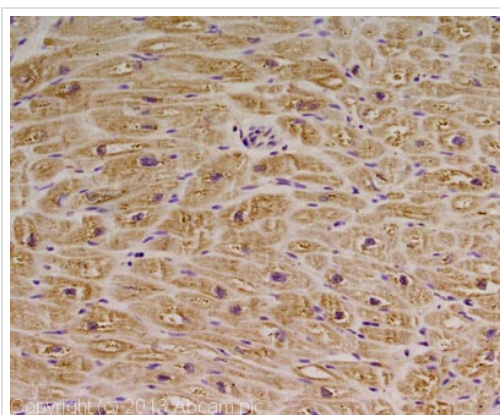
##### Post-translational modifications

This enzyme lacks one of the seven disulfide bonds found in similar PA2 proteins.

##### Cellular localization

Secreted.

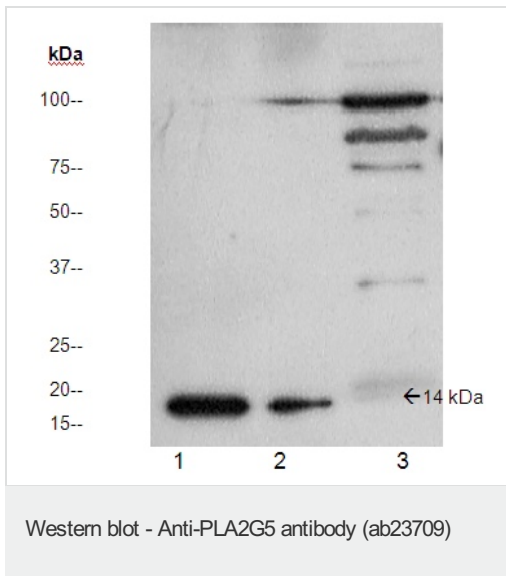
#### Images



Immunohistochemistry (Formalin/PFA-fixed paraffin-embedded sections) - Anti-PLA2G5 antibody (ab23709)

IHC image of PLA2G5 staining in human heart formalin fixed paraffin embedded tissue section, performed on a Leica Bond system using the standard protocol F. The section was pre-treated using heat mediated antigen retrieval with sodium citrate buffer (pH6, epitope retrieval solution 1) for 20 mins. The section was then incubated with ab23709, 5µg/ml, for 15 mins at room temperature and detected using an HRP conjugated compact polymer system. DAB was used as the chromogen. The section was then counterstained with haematoxylin and mounted with DPX.

For other IHC staining systems (automated and non-automated) customers should optimize variable parameters such as antigen retrieval conditions, primary antibody concentration and antibody incubation times.



**All lanes :** Anti-PLA2G5 antibody (ab23709) at 1/500 dilution

**Lane 1 :** Recombinant human sPLA2 (type V) (100 ng)

**Lane 2 :** Recombinant human sPLA2 (type V) (50 ng)

**Lane 3 :** Mouse heart homogenate (50ug)

**Predicted band size:** 15 kDa

**Observed band size:** 15 kDa

**Please note:** All products are "FOR RESEARCH USE ONLY. NOT FOR USE IN DIAGNOSTIC PROCEDURES"

### Our Abpromise to you: Quality guaranteed and expert technical support

- Replacement or refund for products not performing as stated on the datasheet
- Valid for 12 months from date of delivery
- Response to your inquiry within 24 hours
- We provide support in Chinese, English, French, German, Japanese and Spanish
- Extensive multi-media technical resources to help you
- We investigate all quality concerns to ensure our products perform to the highest standards

If the product does not perform as described on this datasheet, we will offer a refund or replacement. For full details of the Abpromise, please visit <https://www.abcam.com/abpromise> or contact our technical team.

### Terms and conditions

- Guarantee only valid for products bought direct from Abcam or one of our authorized distributors