

## Product datasheet

# Anti-PLAC4 antibody ab105401

3 Images

### Overview

---

<b>Product name</b>	Anti-PLAC4 antibody
<b>Description</b>	Rabbit polyclonal to PLAC4
<b>Host species</b>	Rabbit
<b>Tested applications</b>	<b>Suitable for:</b> ICC/IF, ICC, WB
<b>Species reactivity</b>	<b>Reacts with:</b> Human
<b>Immunogen</b>	Synthetic peptide of 17 amino acids derived from near the center of Human PLAC4 (NP_878252).
<b>Positive control</b>	Human placenta tissue
<b>General notes</b>	<p>Reproducibility is key to advancing scientific discovery and accelerating scientists' next breakthrough.</p> <p>Abcam is leading the way with our range of recombinant antibodies, knockout-validated antibodies and knockout cell lines, all of which support improved reproducibility.</p> <p>We are also planning to innovate the way in which we present recommended applications and species on our product datasheets, so that only applications &amp; species that have been tested in our own labs, our suppliers or by selected trusted collaborators are covered by our Abpromise™ guarantee.</p> <p>In preparation for this, we have started to update the applications &amp; species that this product is Abpromise guaranteed for.</p> <p>We are also updating the applications &amp; species that this product has been “predicted to work with,” however this information is not covered by our Abpromise guarantee.</p> <p>Applications &amp; species from publications and Abreviews that have not been tested in our own labs or in those of our suppliers are not covered by the Abpromise guarantee.</p> <p>Please check that this product meets your needs before purchasing. If you have any questions, special requirements or concerns, please send us an inquiry and/or contact our Support team ahead of purchase. Recommended alternatives for this product can be found below, as well as customer reviews and Q&amp;As.</p>

### Properties

---

<b>Form</b>	Liquid
<b>Storage instructions</b>	Shipped at 4°C. Store at +4°C short term (1-2 weeks). Store at -20°C or -80°C. Avoid freeze /

thaw cycle. The product can be stored for up to 12 months.

**Storage buffer**

pH: 7.2  
Preservative: 0.02% Sodium azide  
Constituent: 99% PBS

**Purity**

Immunogen affinity purified

**Clonality**

Polyclonal

**Isotype**

IgG

**Applications**

Our [Abpromise guarantee](#) covers the use of **ab105401** in the following tested applications.

The application notes include recommended starting dilutions; optimal dilutions/concentrations should be determined by the end user.

Application	Abreviews	Notes
ICC/IF		Use a concentration of 20 µg/ml.
ICC		Use a concentration of 10 µg/ml.
WB		Use a concentration of 1 - 2 µg/ml. Predicted molecular weight: 17 kDa.

**Target**

**Tissue specificity**

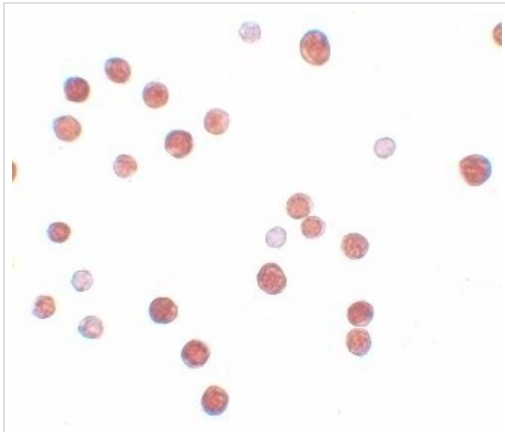
Expressed in placental syncytiotrophoblast and choriocarcinoma cells.

**Images**



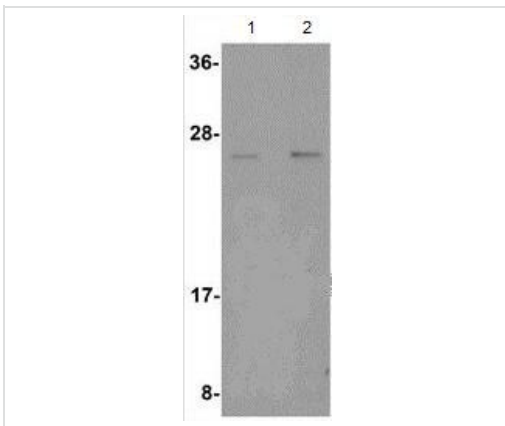
Immunofluorescence of PLAC4 in HeLa cells with ab105401 at 20 ug/mL.

Immunocytochemistry/ Immunofluorescence - Anti-PLAC4 antibody (ab105401)



Immunocytochemistry of PLAC4 in HeLa cells with ab105401 at 10 µg/mL.

Immunocytochemistry - Anti-PLAC4 antibody (ab105401)



**Lane 1** : Anti-PLAC4 antibody (ab105401) at 1 µg/ml

**Lane 2** : Anti-PLAC4 antibody (ab105401) at 2 µg/ml

**All lanes** : Human placenta tissue lysate

Lysates/proteins at 15 µg per lane.

**Predicted band size:** 17 kDa

Western blot - Anti-PLAC4 antibody (ab105401)

**Please note:** All products are "FOR RESEARCH USE ONLY. NOT FOR USE IN DIAGNOSTIC PROCEDURES"

### Our Abpromise to you: Quality guaranteed and expert technical support

- Replacement or refund for products not performing as stated on the datasheet
- Valid for 12 months from date of delivery
- Response to your inquiry within 24 hours
- We provide support in Chinese, English, French, German, Japanese and Spanish
- Extensive multi-media technical resources to help you
- We investigate all quality concerns to ensure our products perform to the highest standards

If the product does not perform as described on this datasheet, we will offer a refund or replacement. For full details of the Abpromise, please visit <https://www.abcam.com/abpromise> or contact our technical team.

## Terms and conditions

---

- Guarantee only valid for products bought direct from Abcam or one of our authorized distributors