




Product datasheet

Anti-PLAC8 antibody ab234788

3 Images

Overview

<b>Product name</b>	Anti-PLAC8 antibody
<b>Description</b>	Rabbit polyclonal to PLAC8
<b>Host species</b>	Rabbit
<b>Tested applications</b>	<b>Suitable for:</b> IHC-P, ICC/IF
<b>Species reactivity</b>	<b>Reacts with:</b> Human <b>Predicted to work with:</b> Orangutan 
<b>Immunogen</b>	Recombinant fragment corresponding to Human PLAC8 aa 1-110. Sequence: MQAQAPVVVVVTQPGVGPAPQNSNWQTMDCDFS DCGVCLCGTFCFPCL GCQVAADMNECCLCGTSMVRTLYRTRYGIPGSICDD YMATLCCPHCTLC QIKRDINRRR  Database link: <a href="#">Q9NZF1</a>   <a href="#">Run BLAST with</a>  <a href="#">Run BLAST with</a>
<b>Positive control</b>	IHC-P: Human tonsil and spleen tissue. ICC/IF: HepG2 cells.

Properties

<b>Form</b>	Liquid
<b>Storage instructions</b>	Shipped at 4°C. Store at +4°C short term (1-2 weeks). Upon delivery aliquot. Store at -20°C long term. Avoid freeze / thaw cycle.
<b>Storage buffer</b>	pH: 7.4 Preservative: 0.03% Proclin Constituents: PBS, 50% Glycerol
<b>Purity</b>	Protein G purified
<b>Clonality</b>	Polyclonal
<b>Isotype</b>	IgG

Applications

Our [Abpromise guarantee](#) covers the use of **ab234788** in the following tested applications.

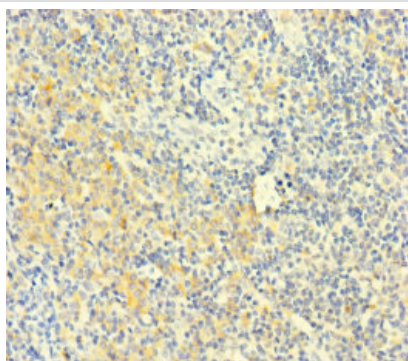
The application notes include recommended starting dilutions; optimal dilutions/concentrations should be determined by the end user.

Application	Abreviews	Notes
IHC-P		1/20 - 1/200.
ICC/IF		1/50 - 1/200.

## Target

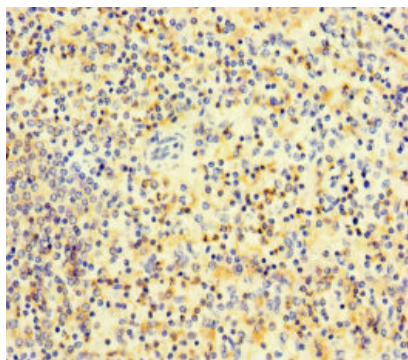
<b>Tissue specificity</b>	Expressed at high levels in plasmacytoid dendritic cells. High expression in spleen, lymph nodes, peripheral blood leukocytes, and bone marrow, with lower expression in thymus, appendix, and fetal liver.
<b>Sequence similarities</b>	Belongs to the cornifelin family.

## Images



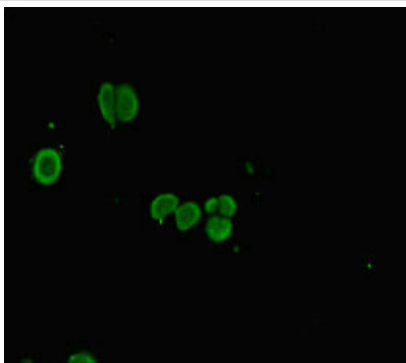
Paraffin-embedded human tonsil tissue stained for PLAC8 using ab234788 at 1/100 dilution in immunohistochemical analysis.

Immunohistochemistry (Formalin/PFA-fixed paraffin-embedded sections) - Anti-PLAC8 antibody (ab234788)



Paraffin-embedded human spleen tissue stained for PLAC8 using ab234788 at 1/100 dilution in immunohistochemical analysis.

Immunohistochemistry (Formalin/PFA-fixed paraffin-embedded sections) - Anti-PLAC8 antibody (ab234788)



Immunocytochemistry/ Immunofluorescence - Anti-PLAC8 antibody (ab234788)

HepG2 (human liver hepatocellular carcinoma cell line) cells stained for PLAC8 using ab234788 at 1/100 dilution in immunofluorescent analysis. Secondary antibody was Alexa Fluor 488-conjugated goat anti-rabbit IgG (H+L).

**Please note:** All products are "FOR RESEARCH USE ONLY. NOT FOR USE IN DIAGNOSTIC PROCEDURES"

### Our Abpromise to you: Quality guaranteed and expert technical support

---

- Replacement or refund for products not performing as stated on the datasheet
- Valid for 12 months from date of delivery
- Response to your inquiry within 24 hours
- We provide support in Chinese, English, French, German, Japanese and Spanish
- Extensive multi-media technical resources to help you
- We investigate all quality concerns to ensure our products perform to the highest standards

If the product does not perform as described on this datasheet, we will offer a refund or replacement. For full details of the Abpromise, please visit <https://www.abcam.com/abpromise> or contact our technical team.

### Terms and conditions

---

- Guarantee only valid for products bought direct from Abcam or one of our authorized distributors