

Product datasheet

# Anti-Placental alkaline phosphatase (PLAP) antibody [ALPP/870] ab216038

1 Image

Overview

<b>Product name</b>	Anti-Placental alkaline phosphatase (PLAP) antibody [ALPP/870]
<b>Description</b>	Mouse monoclonal [ALPP/870] to Placental alkaline phosphatase (PLAP)
<b>Host species</b>	Mouse
<b>Tested applications</b>	<b>Suitable for:</b> IHC-P
<b>Species reactivity</b>	<b>Reacts with:</b> Human
<b>Immunogen</b>	<p>Recombinant full length protein corresponding to Human Placental alkaline phosphatase (PLAP) aa 1-535.</p> <p>Sequence:</p> <pre> MLGPCMLLLLLLGLRLQLSLGIIPVEEENPDFWNREA AEALGAAKKLQP AQTAAKNLIIFLGDGMGVSTVTAARILKGQKDKLGPFI PLAMDRFPYVA LSKTYNVDKHVPDSGATATAYLCGVKGNFQTIGLSAAA RFNQCNTTRGNE VISVMNRAKKAGKSVGVTTRVQHASPAGTYAHTVN RNWYSDADVPASA RQEGCQDIATQLISNMDIDVILGGGRKYMFRMGTPDPE YPDDYSQGGTRL DGKNLVQEWLAKRQGARYVWNRTLMQASLDPSVTH LMGLFEPGDMKYEI HRDSTLDPSPMEMTEAALRLLSRNPRGFFLFVEGGRI DHGHESRAYRAL TETIMFDDAIERAGQLTSEEDTSLSLVTADHSHVFSFGG YPLRGSSIFGLA PGKARDRKAYTVLLYGNGPGYVLKDGARPDVTESESG SPEYRQQSAVPLD EETHAGEDVAVFARGPQAHLVHGVQEQTFAHVMAFA ACLEPYTACDLAP PAGTTDAAHPGRSVVPALLPLLAGTLLLLLETATAP </pre>

Database link: [P05187](#)

 [Run BLAST with](#)

 [Run BLAST with](#)

**Positive control** Human placenta tissue.

## Properties

---

<b>Form</b>	Liquid
<b>Storage instructions</b>	Shipped at 4°C. Store at +4°C short term (1-2 weeks). Upon delivery aliquot. Store at -20°C long term. Avoid freeze / thaw cycle.
<b>Storage buffer</b>	Preservative: 0.05% Sodium azide Constituents: 99% PBS, 0.05% BSA
<b>Purity</b>	Protein A purified
<b>Purification notes</b>	ab216038 was purified from Bioreactor Concentrate by Protein A/G.
<b>Clonality</b>	Monoclonal
<b>Clone number</b>	ALPP/870
<b>Isotype</b>	IgG2b
<b>Light chain type</b>	kappa

## Applications

---

Our [Abpromise guarantee](#) covers the use of **ab216038** in the following tested applications.

The application notes include recommended starting dilutions; optimal dilutions/concentrations should be determined by the end user.

Application	Abreviews	Notes
IHC-P		Use a concentration of 0.25 - 0.5 µg/ml. (Primary incubation for 30 minutes at RT. No special pretreatment is required for the immunohistochemical staining of formalin-fixed tissues).

---

## Target

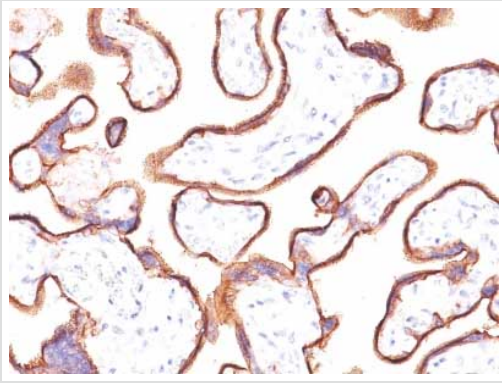
---

<b>Sequence similarities</b>	Belongs to the alkaline phosphatase family.
<b>Cellular localization</b>	Cell membrane.

---

## Images

---



Immunohistochemical analysis of formalin-fixed, paraffin-embedded human placenta tissue labeling Placental alkaline phosphatase (PLAP) with ab216038 at 0.5 µg/ml.

Immunohistochemistry (Formalin/PFA-fixed paraffin-embedded sections) - Anti-Placental alkaline phosphatase (PLAP) antibody [ALPP/870] (ab216038)

**Please note:** All products are "FOR RESEARCH USE ONLY. NOT FOR USE IN DIAGNOSTIC PROCEDURES"

### Our Abpromise to you: Quality guaranteed and expert technical support

---

- Replacement or refund for products not performing as stated on the datasheet
- Valid for 12 months from date of delivery
- Response to your inquiry within 24 hours
- We provide support in Chinese, English, French, German, Japanese and Spanish
- Extensive multi-media technical resources to help you
- We investigate all quality concerns to ensure our products perform to the highest standards

If the product does not perform as described on this datasheet, we will offer a refund or replacement. For full details of the Abpromise, please visit <https://www.abcam.com/abpromise> or contact our technical team.

### Terms and conditions

---

- Guarantee only valid for products bought direct from Abcam or one of our authorized distributors