

Product datasheet

Anti-Placental alkaline phosphatase (PLAP) antibody [EPR6141] ab133602

KO VALIDATED Recombinant RabMAB

★★★★☆ 2 Abreviews 16 References 12 Images

Overview

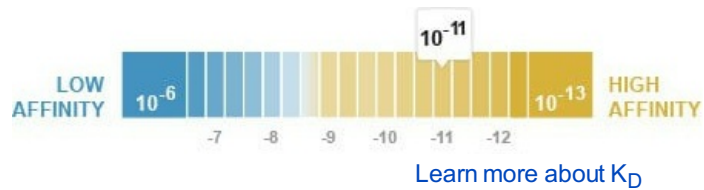
Product name	Anti-Placental alkaline phosphatase (PLAP) antibody [EPR6141]
Description	Rabbit monoclonal [EPR6141] to Placental alkaline phosphatase (PLAP)
Host species	Rabbit
Tested applications	Suitable for: WB, IHC-P Unsuitable for: Flow Cyt, ICC or IP
Species reactivity	Reacts with: Human
Immunogen	Synthetic peptide within Human Placental alkaline phosphatase (PLAP) aa 150-250 (extracellular). The exact sequence is proprietary.
Positive control	WB: Human placenta, and seminoma tissue lysates, and HeLa cell lysate. IHC-P: Human dysgerminoma and placenta tissues.
General notes	<p>This product is a recombinant monoclonal antibody, which offers several advantages including:</p> <ul style="list-style-type: none"> - High batch-to-batch consistency and reproducibility - Improved sensitivity and specificity - Long-term security of supply - Animal-free production <p>For more information see here.</p> <p>Our RabMAB[®] technology is a patented hybridoma-based technology for making rabbit monoclonal antibodies. For details on our patents, please refer to RabMAB[®] patents.</p> <p>We are constantly working hard to ensure we provide our customers with best in class antibodies. As a result of this work we are pleased to now offer this antibody in purified format. We are in the process of updating our datasheets. The purified format is designated 'PUR' on our product labels. If you have any questions regarding this update, please contact our Scientific Support team.</p> <p>Mouse, Rat: We have preliminary internal testing data to indicate this antibody may not react with these species. Please contact us for more information.</p>

Properties

Form Liquid

Storage instructions Shipped at 4°C. Store at +4°C short term (1-2 weeks). Upon delivery aliquot. Store at -20°C. Stable for 12 months at -20°C.

Dissociation constant (K_D) K_D = 5.10 x 10⁻¹¹ M



Storage buffer pH: 7.20
Preservative: 0.01% Sodium azide
Constituents: 59% PBS, 40% Glycerol (glycerin, glycerine), 0.5% BSA

Purity Protein A purified

Clonality Monoclonal

Clone number EPR6141

Isotype IgG

Applications

The Abpromise guarantee Our [Abpromise guarantee](#) covers the use of ab133602 in the following tested applications. The application notes include recommended starting dilutions; optimal dilutions/concentrations should be determined by the end user.

Application	Abreviews	Notes
WB	★ ★ ★ ★ ★ (1)	1/10000 - 1/50000. Detects a band of approximately 70 kDa (predicted molecular weight: 58 kDa).
IHC-P		1/250 - 1/500. Perform heat mediated antigen retrieval before commencing with IHC staining protocol. ab172730 - Rabbit monoclonal IgG, is suitable for use as an isotype control with this antibody.

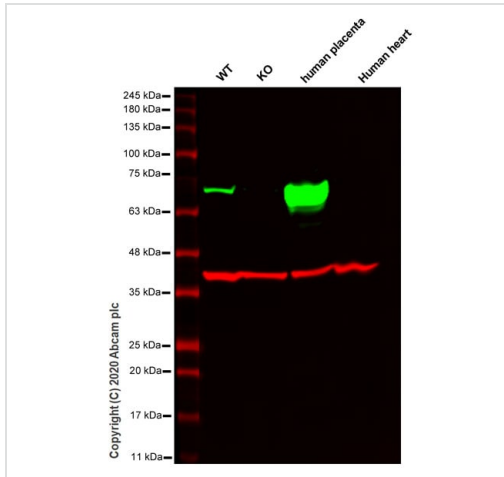
Application notes Is unsuitable for Flow Cyt, ICC or IP.

Target

Sequence similarities Belongs to the alkaline phosphatase family.

Cellular localization Cell membrane.

Images



Western blot - Anti-Placental alkaline phosphatase (PLAP) antibody [EPR6141] (ab133602)

All lanes : Anti-Placental alkaline phosphatase (PLAP) antibody [EPR6141] (ab133602) at 1/1000 dilution

Lane 1 : Wild-type HeLa cell lysate

Lane 2 : ALPP knockout HeLa cell lysate

Lane 3 : Human placenta tissue lysate

Lane 4 : Human heart tissue lysate

Lysates/proteins at 20 µg per lane.

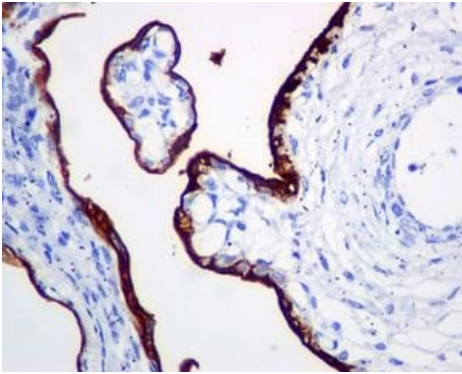
Performed under reducing conditions.

Predicted band size: 58 kDa

Observed band size: 70 kDa

Lanes 1-4: Merged signal (red and green). Green - ab133602 observed at 70 kDa. Red - loading control, ab8245 observed at 37 kDa.

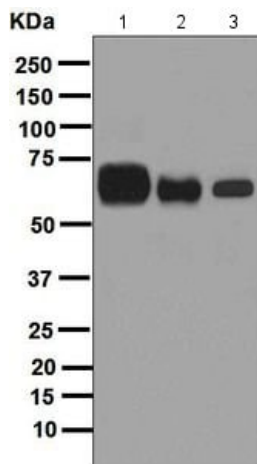
ab133602 Anti-Placental alkaline phosphatase (PLAP) antibody [EPR6141] was shown to specifically react with Placental alkaline phosphatase (PLAP) in wild-type HeLa cells. Loss of signal was observed when knockout cell line ab261763 (knockout cell lysate ab256836) was used. Wild-type and Placental alkaline phosphatase (PLAP) knockout samples were subjected to SDS-PAGE. ab133602 and Anti-GAPDH antibody [6C5] - Loading Control (ab8245) were incubated overnight at 4°C at 1 in 1000 dilution and 1 in 20000 dilution respectively. Blots were developed with Goat anti-Rabbit IgG H&L (IRDye® 800CW) preadsorbed (ab216773) and Goat anti-Mouse IgG H&L (IRDye® 680RD) preadsorbed (ab216776) secondary antibodies at 1 in 10000 dilution for 1 hour at room temperature before imaging.



Immunohistochemistry (Formalin/PFA-fixed paraffin-embedded sections) - Anti-Placental alkaline phosphatase (PLAP) antibody [EPR6141] (ab133602)

Immunohistochemical analysis of paraffin-embedded Human placenta tissue labelling Placental alkaline phosphatase (PLAP) with ab133602 at 1/250.

Perform heat mediated antigen retrieval before commencing with IHC staining protocol.



Western blot - Anti-Placental alkaline phosphatase (PLAP) antibody [EPR6141] (ab133602)

All lanes : Anti-Placental alkaline phosphatase (PLAP) antibody [EPR6141] (ab133602) at 1/10000 dilution

Lane 1 : Human placenta tissue lysate

Lane 2 : Human seminoma tissue lysate

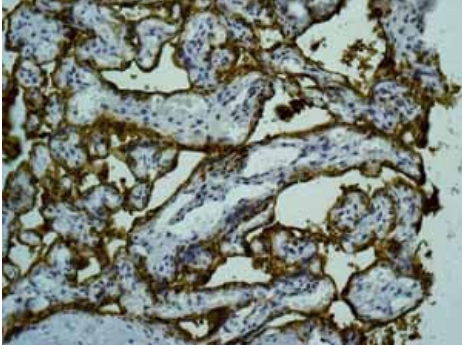
Lane 3 : HeLa cell lysate at 10 µg

Secondary

All lanes : HRP labelled goat anti-rabbit at 1/2000 dilution

Predicted band size: 58 kDa

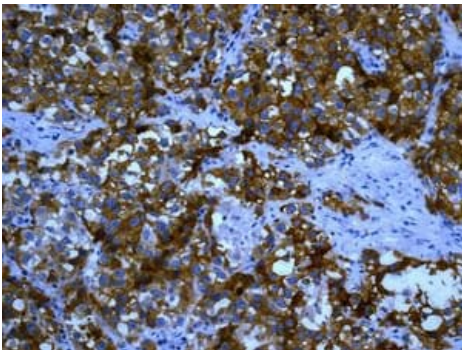
Observed band size: 70 kDa



Immunohistochemistry (Formalin/PFA-fixed paraffin-embedded sections) - Anti-Placental alkaline phosphatase (PLAP) antibody [EPR6141] (ab133602)

ab133602 showing positive staining in Normal placenta tissue.

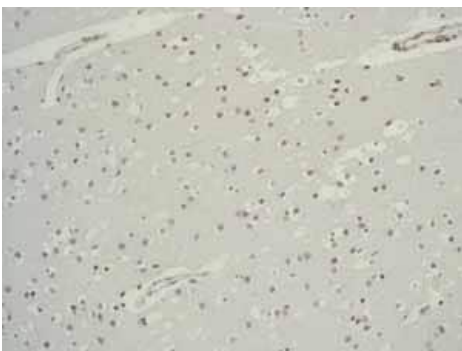
Perform heat mediated antigen retrieval before commencing with IHC staining protocol.



Immunohistochemistry (Formalin/PFA-fixed paraffin-embedded sections) - Anti-Placental alkaline phosphatase (PLAP) antibody [EPR6141] (ab133602)

Immunohistochemical analysis of paraffin-embedded Human dysgerminoma tissue labelling Placental alkaline phosphatase (PLAP) with ab133602 at 1/250.

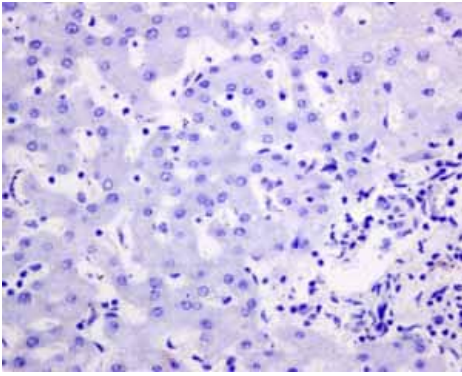
Perform heat mediated antigen retrieval before commencing with IHC staining protocol.



Immunohistochemistry (Formalin/PFA-fixed paraffin-embedded sections) - Anti-Placental alkaline phosphatase (PLAP) antibody [EPR6141] (ab133602)

ab133602 showing negative staining in Normal brain tissue.

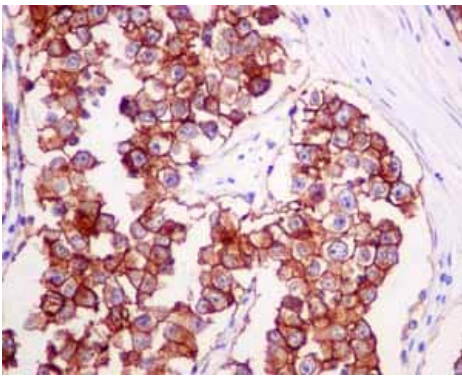
Perform heat mediated antigen retrieval before commencing with IHC staining protocol.



Immunohistochemistry (Formalin/PFA-fixed paraffin-embedded sections) - Anti-Placental alkaline phosphatase (PLAP) antibody [EPR6141] (ab133602)

ab133602 showing negative staining in Normal liver tissue.

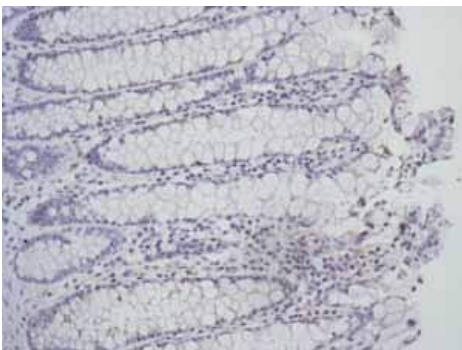
Perform heat mediated antigen retrieval before commencing with IHC staining protocol.



Immunohistochemistry (Formalin/PFA-fixed paraffin-embedded sections) - Anti-Placental alkaline phosphatase (PLAP) antibody [EPR6141] (ab133602)

ab133602 showing positive staining in Seminoma tissue.

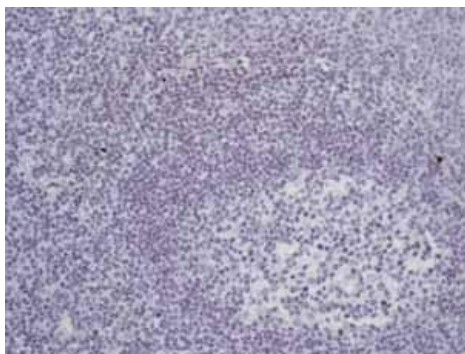
Perform heat mediated antigen retrieval before commencing with IHC staining protocol.



Immunohistochemistry (Formalin/PFA-fixed paraffin-embedded sections) - Anti-Placental alkaline phosphatase (PLAP) antibody [EPR6141] (ab133602)

ab133602 showing negative staining in Normal colon tissue.

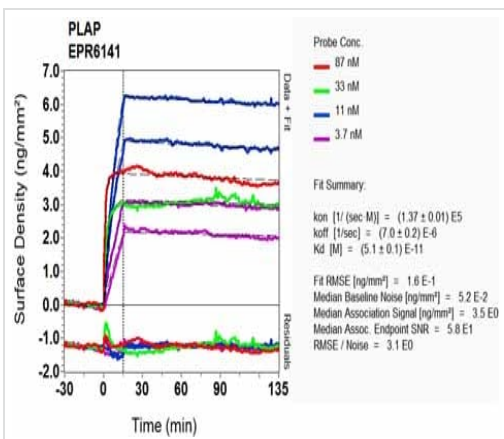
Perform heat mediated antigen retrieval before commencing with IHC staining protocol.



Immunohistochemistry (Formalin/PFA-fixed paraffin-embedded sections) - Anti-Placental alkaline phosphatase (PLAP) antibody [EPR6141] (ab133602)

ab133602 showing negative staining in Normal tonsil tissue.

Perform heat mediated antigen retrieval before commencing with IHC staining protocol.



SPR Scanning - Anti-Placental alkaline phosphatase (PLAP) antibody [EPR6141] (ab133602)

Equilibrium dissociation constant (K_D)

Learn more about K_D

[Click here to learn more about \$K_D\$](#)

Why choose a recombinant antibody?



Research with confidence
Consistent and reproducible results



Long-term and scalable supply
Recombinant technology



Success from the first experiment
Confirmed specificity



Ethical standards compliant
Animal-free production

Anti-Placental alkaline phosphatase (PLAP) antibody [EPR6141] (ab133602)

Please note: All products are "FOR RESEARCH USE ONLY. NOT FOR USE IN DIAGNOSTIC PROCEDURES"

Our Abpromise to you: Quality guaranteed and expert technical support

- Replacement or refund for products not performing as stated on the datasheet
- Valid for 12 months from date of delivery
- Response to your inquiry within 24 hours

- We provide support in Chinese, English, French, German, Japanese and Spanish
- Extensive multi-media technical resources to help you
- We investigate all quality concerns to ensure our products perform to the highest standards

If the product does not perform as described on this datasheet, we will offer a refund or replacement. For full details of the Abpromise, please visit <https://www.abcam.com/abpromise> or contact our technical team.

Terms and conditions

- Guarantee only valid for products bought direct from Abcam or one of our authorized distributors