




Product datasheet

Anti-Plakophilin 2/PKP2 antibody ab189323

2 Images

Overview

| | |
|----------------------------|---|
| Product name | Anti-Plakophilin 2/PKP2 antibody |
| Description | Goat polyclonal to Plakophilin 2/PKP2 |
| Host species | Goat |
| Tested applications | Suitable for: WB, IHC-P |
| Species reactivity | Reacts with: Mouse, Rat, Human Predicted to work with: Rabbit, Horse, Hamster, Cow, Dog, Gorilla, Bat  |
| Immunogen | Synthetic peptide corresponding to Human Plakophilin 2/PKP2 aa 125-139 (internal sequence) (Cysteine residue). (NP_001005242.2; NP_004563.2). Sequence: RGTAQYSSQKSVEER Database link: Q99959  Run BLAST with  Run BLAST with |
| Positive control | Human prostate tissue; Mouse and Rat heart lysates. |
| General notes | This product was previously labelled as Plakophilin 2 |

Reproducibility is key to advancing scientific discovery and accelerating scientists' next breakthrough.

Abcam is leading the way with our range of recombinant antibodies, knockout-validated antibodies and knockout cell lines, all of which support improved reproducibility.

We are also planning to innovate the way in which we present recommended applications and species on our product datasheets, so that only applications & species that have been tested in our own labs, our suppliers or by selected trusted collaborators are covered by our Abpromise™ guarantee.

In preparation for this, we have started to update the applications & species that this product is Abpromise guaranteed for.

We are also updating the applications & species that this product has been “predicted to work with,” however this information is not covered by our Abpromise guarantee.

Applications & species from publications and Abreviews that have not been tested in our own labs or in those of our suppliers are not covered by the Abpromise guarantee.

Please check that this product meets your needs before purchasing. If you have any questions,

special requirements or concerns, please send us an inquiry and/or contact our Support team ahead of purchase. Recommended alternatives for this product can be found below, as well as customer reviews and Q&As.

Properties

| | |
|-----------------------------|---|
| Form | Liquid |
| Storage instructions | Shipped at 4°C. Store at +4°C short term (1-2 weeks). Upon delivery aliquot. Store at -20°C long term. Avoid freeze / thaw cycle. |
| Storage buffer | pH: 7.30 Preservative: 0.02% Sodium azide Constituents: 99% Tris buffered saline, 0.5% BSA |
| Purity | Immunogen affinity purified |
| Clonality | Polyclonal |
| Isotype | IgG |

Applications

Our [Abpromise guarantee](#) covers the use of **ab189323** in the following tested applications.

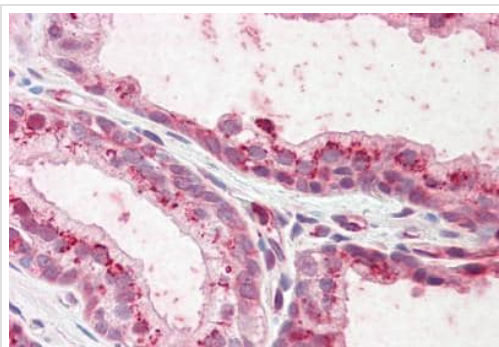
The application notes include recommended starting dilutions; optimal dilutions/concentrations should be determined by the end user.

| Application | Abreviews | Notes |
|-------------|-----------|---|
| WB | | Use a concentration of 0.3 - 1 µg/ml. Predicted molecular weight: 97 kDa. |
| IHC-P | | Use a concentration of 3.75 µg/ml. |

Target

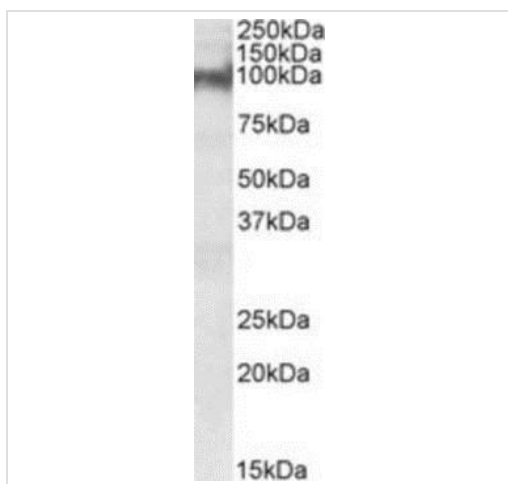
| | |
|-------------------------------|---|
| Function | May play a role in junctional plaques. |
| Tissue specificity | Detected in heart right ventricle (at protein level). Widely expressed. Found at desmosomal plaques in simple and stratified epithelia and in non-epithelial tissues such as myocardium and lymph node follicles. In most stratified epithelia found in the desmosomes of the basal cell layer and seems to be absent from suprabasal strata. |
| Involvement in disease | Familial arrhythmogenic right ventricular dysplasia 9 |
| Sequence similarities | Belongs to the beta-catenin family. Contains 8 ARM repeats. |
| Cellular localization | Nucleus. Cell junction > desmosome. Nuclear and associated with desmosomes. |

Images



Immunohistochemistry (Formalin/PFA-fixed paraffin-embedded sections) - Anti-Plakophilin 2/PKP2 antibody (ab189323)

Immunohistochemical analysis of formalin-fixed, paraffin-embedded Human prostate tissue, labeling Plakophilin 2/PKP2 with ab189323 at 3.75 µg/ml.



Western blot - Anti-Plakophilin 2/PKP2 antibody (ab189323)

Anti-Plakophilin 2/PKP2 antibody (ab189323) at 0.3 µg/ml + Mouse heart lysate at 35 µg

Developed using the ECL technique.

Predicted band size: 97 kDa

Please note: All products are "FOR RESEARCH USE ONLY. NOT FOR USE IN DIAGNOSTIC PROCEDURES"

Our Abpromise to you: Quality guaranteed and expert technical support

- Replacement or refund for products not performing as stated on the datasheet
- Valid for 12 months from date of delivery
- Response to your inquiry within 24 hours
- We provide support in Chinese, English, French, German, Japanese and Spanish
- Extensive multi-media technical resources to help you
- We investigate all quality concerns to ensure our products perform to the highest standards

If the product does not perform as described on this datasheet, we will offer a refund or replacement. For full details of the Abpromise, please visit <https://www.abcam.com/abpromise> or contact our technical team.

Terms and conditions

- Guarantee only valid for products bought direct from Abcam or one of our authorized distributors