

Product datasheet

Anti-Plakophilin 2/PKP2 antibody ab223757

8 Images

Overview

Product name	Anti-Plakophilin 2/PKP2 antibody
Description	Rabbit polyclonal to Plakophilin 2/PKP2
Host species	Rabbit
Tested applications	Suitable for: WB, ICC/IF, IHC-P
Species reactivity	Reacts with: Human
Immunogen	Recombinant fragment corresponding to Human Plakophilin 2/PKP2 aa 72-194. Sequence: VGNGNLHRTSSVPEYVYNLHLVENDFVGGRRSPVPKTY DMLKAGTTATYEG RWGRGTAQYSSQKSVEERSLRHPLRRLEISPDSSPER AHYTHSDYQYSQR SQAGHTLHHQESRRAALLVPPRY Database link: Q99959 Run BLAST with Run BLAST with
Positive control	WB: Caco-2 cell lysate. IHC-P: Human heart muscle tissue. ICC/IF: A431 cells.
General notes	This product was previously labelled as Plakophilin 2

Properties

Form	Liquid
Storage instructions	Shipped at 4°C. Store at +4°C short term (1-2 weeks). Upon delivery aliquot. Store at -20°C long term. Avoid freeze / thaw cycle.
Storage buffer	pH: 7.20 Preservative: 0.02% Sodium azide Constituents: 40% Glycerol, PBS
Purity	Immunogen affinity purified
Clonality	Polyclonal
Isotype	IgG

Applications

Our [Abpromise guarantee](#) covers the use of **ab223757** in the following tested applications.

The application notes include recommended starting dilutions; optimal dilutions/concentrations should be determined by the end user.

Application	Abreviews	Notes
WB		1/100 - 1/250. Predicted molecular weight: 97.4 kDa.
ICC/IF		Use a concentration of 1 - 4 µg/ml. Fixation/permeabilization: PFA/Triton X-100
IHC-P		1/50 - 1/200. Perform heat mediated antigen retrieval with citrate buffer pH 6 before commencing with IHC staining protocol.

Target

Function

May play a role in junctional plaques.

Tissue specificity

Detected in heart right ventricle (at protein level). Widely expressed. Found at desmosomal plaques in simple and stratified epithelia and in non-epithelial tissues such as myocardium and lymph node follicles. In most stratified epithelia found in the desmosomes of the basal cell layer and seems to be absent from suprabasal strata.

Involvement in disease

Familial arrhythmogenic right ventricular dysplasia 9

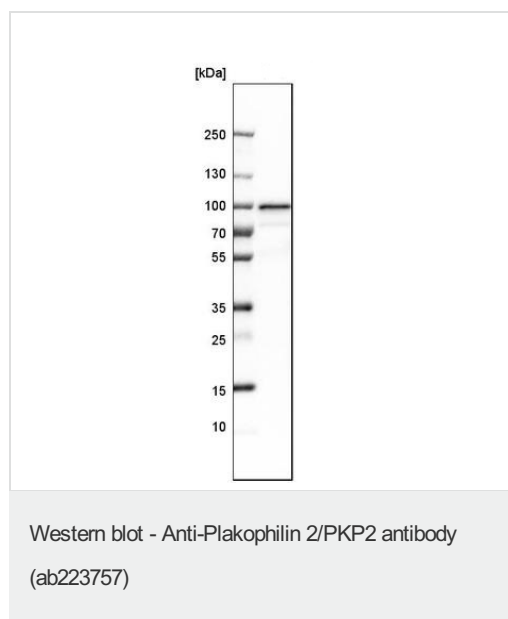
Sequence similarities

Belongs to the beta-catenin family.
Contains 8 ARM repeats.

Cellular localization

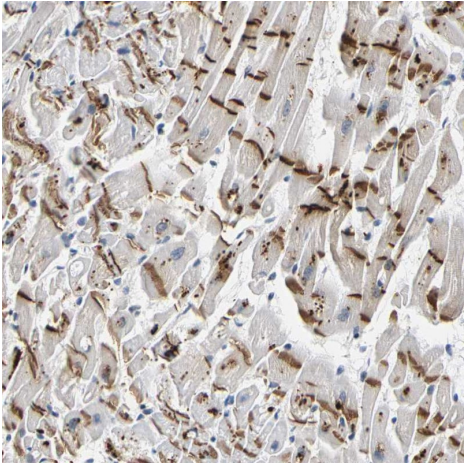
Nucleus. Cell junction > desmosome. Nuclear and associated with desmosomes.

Images



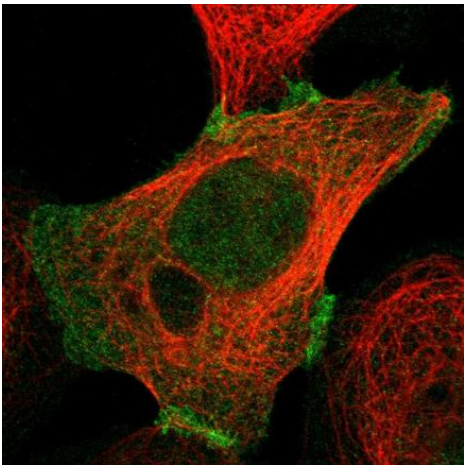
Anti-Plakophilin 2/PKP2 antibody (ab223757) at 1/100 dilution + Caco-2 (human colorectal adenocarcinoma cell line) cell lysate

Predicted band size: 97.4 kDa



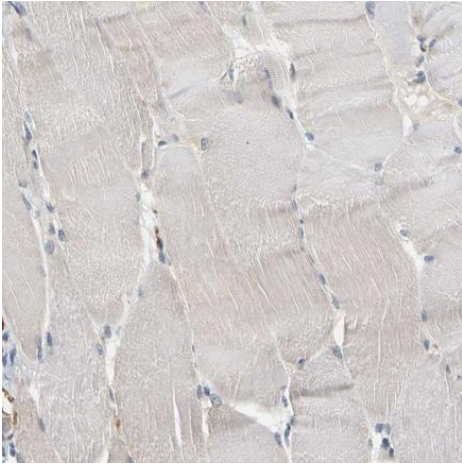
Immunohistochemical analysis of paraffin embedded human heart muscle tissue staining PKP2 with ab223757 at 1/50 dilution.

Immunohistochemistry (Formalin/PFA-fixed paraffin-embedded sections) - Anti-Plakophilin 2/PKP2 antibody (ab223757)



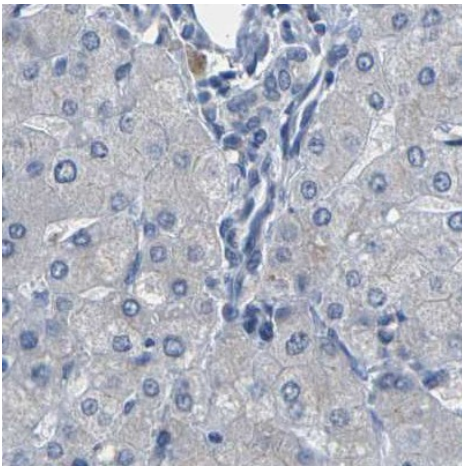
PFA-fixed, Triton X-100 permeabilized A431 (human epidermoid carcinoma cell line) cells stained for Plakophilin 2/PKP2 (green) using ab223757 at 4 µg/ml in ICC/IF.

Immunocytochemistry/ Immunofluorescence - Anti-Plakophilin 2/PKP2 antibody (ab223757)



Immunohistochemical analysis of paraffin embedded human skeletal muscle tissue staining PKP2 with ab223757 at 1/50 dilution.

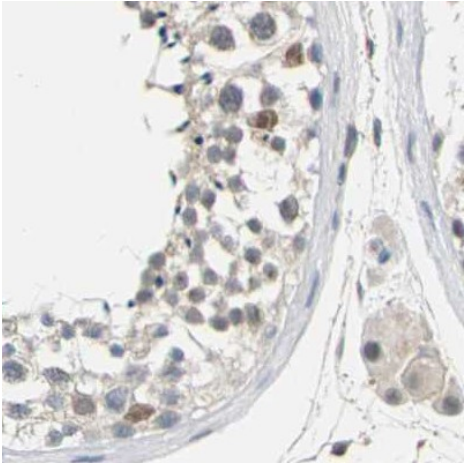
Immunohistochemistry (Formalin/PFA-fixed paraffin-embedded sections) - Anti-Plakophilin 2/PKP2 antibody (ab223757)



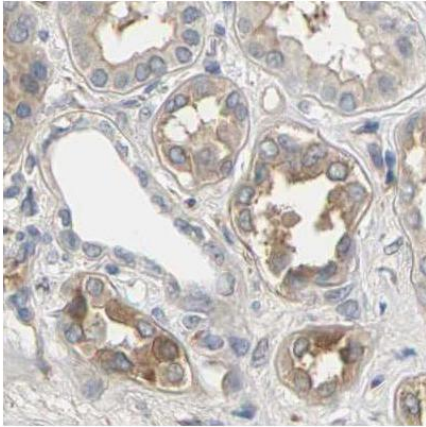
Immunohistochemical analysis of paraffin embedded human liver tissue staining PKP2 with ab223757 at 1/50 dilution.

Immunohistochemistry (Formalin/PFA-fixed paraffin-embedded sections) - Anti-Plakophilin 2/PKP2 antibody (ab223757)

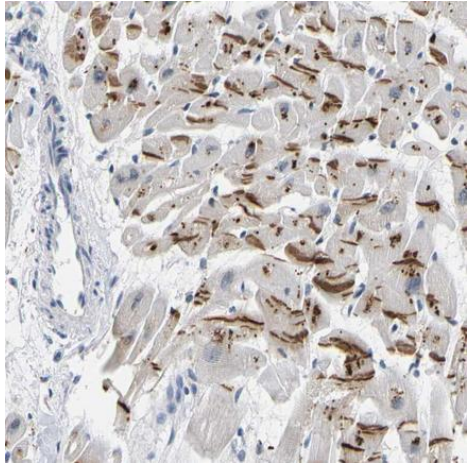
Immunohistochemical analysis of paraffin embedded human testis tissue staining PKP2 with ab223757 at 1/50 dilution.



Immunohistochemistry (Formalin/PFA-fixed paraffin-embedded sections) - Anti-Plakophilin 2/PKP2 antibody (ab223757)



Immunohistochemistry (Formalin/PFA-fixed paraffin-embedded sections) - Anti-Plakophilin 2/PKP2 antibody (ab223757)



Paraffin embedded sections of human heart muscle tissue stained for Plakophilin 2/PKP2 with ab223757 at 1/50 dilution in immunohistochemical analysis.

Immunohistochemistry (Formalin/PFA-fixed paraffin-embedded sections) - Anti-Plakophilin 2/PKP2 antibody (ab223757)

Please note: All products are "FOR RESEARCH USE ONLY. NOT FOR USE IN DIAGNOSTIC PROCEDURES"

Our Abpromise to you: Quality guaranteed and expert technical support

- Replacement or refund for products not performing as stated on the datasheet
- Valid for 12 months from date of delivery
- Response to your inquiry within 24 hours
- We provide support in Chinese, English, French, German, Japanese and Spanish
- Extensive multi-media technical resources to help you
- We investigate all quality concerns to ensure our products perform to the highest standards

If the product does not perform as described on this datasheet, we will offer a refund or replacement. For full details of the Abpromise, please visit <https://www.abcam.com/abpromise> or contact our technical team.

Terms and conditions

- Guarantee only valid for products bought direct from Abcam or one of our authorized distributors