

Product datasheet

Anti-Plasma Cell antibody [SPM310], prediluted ab18096

1 Image

Overview

Product name	Anti-Plasma Cell antibody [SPM310], prediluted
Description	Mouse monoclonal [SPM310] to Plasma Cell, prediluted
Host species	Mouse
Specificity	We have data to indicate that this antibody may not cross react with Rat. However, this has not been conclusively tested and expression levels may vary in certain cell lines/tissues.
Tested applications	Suitable for: IHC-P
Species reactivity	Reacts with: Human
Immunogen	Tissue/ cell preparation (Human).
Positive control	Tonsil or lymph node.
General notes	The concentration of this prediluted antibody is 4µg/ml.

Properties

Form	Liquid
Storage instructions	Shipped at 4°C. Store at +4°C.
Storage buffer	Preservative: 0.1% Sodium azide
Clonality	Monoclonal
Clone number	SPM310
Isotype	IgG2a
Light chain type	kappa

Applications

Our [Abpromise guarantee](#) covers the use of **ab18096** in the following tested applications.

The application notes include recommended starting dilutions; optimal dilutions/concentrations should be determined by the end user.

Application	Abreviews	Notes
-------------	-----------	-------

IHC-P

Application notes

IHC-P: Prediluted. Perform enzymatic antigen retrieval before commencing with IHC staining protocol with pepsin at 1 mg/ml Tris-HCl, pH 2.0 for 15 min at RT or 10 min at 37C.

Not tested in other applications.

Optimal dilutions/concentrations should be determined by the end user.

Target

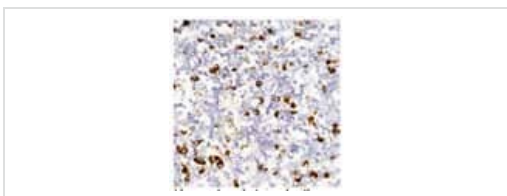
Relevance

Plasma cells (also called plasma B cells or plasmocytes) are cells of the immune system that secrete antibodies.

Cellular localization

Cytoplasmic

Images



Human tonsil stained with ab18096.

Immunohistochemistry (Formalin/PFA-fixed paraffin-embedded sections) - Anti-Plasma Cell antibody [SPM310], prediluted (ab18096)

Please note: All products are "FOR RESEARCH USE ONLY. NOT FOR USE IN DIAGNOSTIC PROCEDURES"

Our Abpromise to you: Quality guaranteed and expert technical support

- Replacement or refund for products not performing as stated on the datasheet
- Valid for 12 months from date of delivery
- Response to your inquiry within 24 hours
- We provide support in Chinese, English, French, German, Japanese and Spanish
- Extensive multi-media technical resources to help you
- We investigate all quality concerns to ensure our products perform to the highest standards

If the product does not perform as described on this datasheet, we will offer a refund or replacement. For full details of the Abpromise, please visit <https://www.abcam.com/abpromise> or contact our technical team.

Terms and conditions

- Guarantee only valid for products bought direct from Abcam or one of our authorized distributors