

Product datasheet

Anti-PLBD2 antibody [EPR21742] ab216866

Recombinant RabMAb

3 Images

Overview

Product name	Anti-PLBD2 antibody [EPR21742]
Description	Rabbit monoclonal [EPR21742] to PLBD2
Host species	Rabbit
Tested applications	Suitable for: WB
Species reactivity	Reacts with: Mouse, Rat, Human
Immunogen	Synthetic peptide. This information is proprietary to Abcam and/or its suppliers.
Positive control	WB: U937, MCF7, MEF and NIH/3T3 whole cell lysates; human fetal spleen, fetal kidney and fetal brain tissue lysates; Mouse brain, kidney and liver tissue lysates; Rat brain, liver and spleen tissue lysates.
General notes	<p>This product is a recombinant monoclonal antibody, which offers several advantages including:</p> <ul style="list-style-type: none"> - High batch-to-batch consistency and reproducibility - Improved sensitivity and specificity - Long-term security of supply - Animal-free production <p>For more information see here.</p> <p>Our RabMAb[®] technology is a patented hybridoma-based technology for making rabbit monoclonal antibodies. For details on our patents, please refer to RabMAb[®] patents.</p>

Properties

Form	Liquid
Storage instructions	Shipped at 4°C. Store at +4°C short term (1-2 weeks). Upon delivery aliquot. Store at -20°C long term. Avoid freeze / thaw cycle.
Storage buffer	<p>pH: 7.2</p> <p>Preservative: 0.01% Sodium azide</p> <p>Constituents: PBS, 40% Glycerol (glycerin, glycerine), 0.05% BSA</p>
Purity	Protein A purified
Clonality	Monoclonal
Clone number	EPR21742

Isotype

IgG

Applications

The Abpromise guarantee

Our [Abpromise guarantee](#) covers the use of ab216866 in the following tested applications.

The application notes include recommended starting dilutions; optimal dilutions/concentrations should be determined by the end user.

Application	Abreviews	Notes
WB		1/1000. Predicted molecular weight: 65 kDa.

Target

Function

Putative phospholipase.

Tissue specificity

Ubiquitously expressed, with highest levels in heart, brain and liver.

Sequence similarities

Belongs to the phospholipase B-like family.

Post-translational modifications

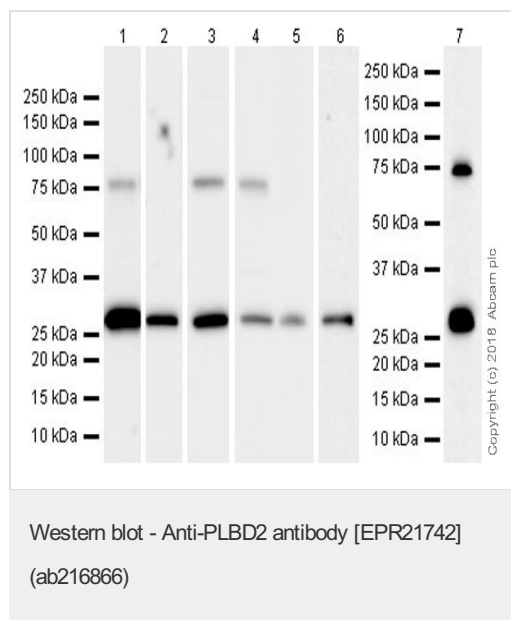
The p76 protein is synthesized as a 80 kDa precursor which is then processed into a N-terminal 32 kDa form and a C-terminal 45 kDa form.

Glycosylated; contains mannose 6-phosphate sugars.

Cellular localization

Lysosome lumen.

Images



All lanes : Anti-PLBD2 antibody [EPR21742] (ab216866) at 1/1000 dilution

Lane 1 : U937 (human histiocytic lymphoma cell line) whole cell lysate at 20 µg

Lane 2 : Human fetal spleen tissue lysate at 20 µg

Lane 3 : MCF7 (human breast adenocarcinoma cell line) whole cell lysate at 20 µg

Lane 4 : MEF (mouse embryonic fibroblast cell line) whole cell lysate at 20 µg

Lane 5 : NIH/3T3 (mouse embryonic fibroblast cell line) whole cell lysate

Lane 6 : Human fetal kidney tissue lysate at 20 µg

Lane 7 : Human fetal brain tissue lysate at 10 µg

Secondary

All lanes : Goat Anti-Rabbit IgG H&L (HRP) (ab97051) at 1/100000 dilution

Developed using the ECL technique.

Predicted band size: 65 kDa

Observed band size: 76 kDa

Additional bands at: 32/28 kDa (possible cleavage fragment)

Blocking and dilution buffer: 5% NFDM/TBST.

Exposure times.

Lanes 1 & 2: 59 seconds

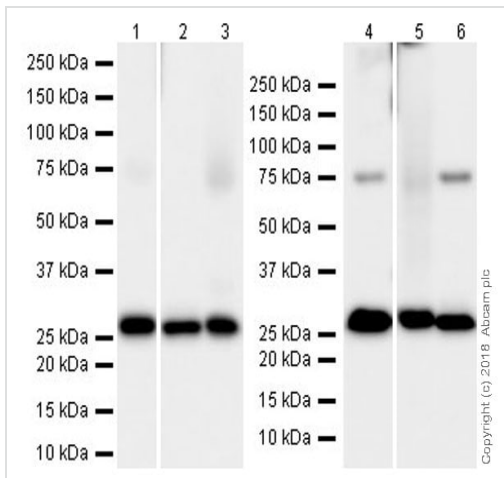
Lane 3: 15 seconds.

Lanes 4 & 5: 3 seconds.

Lanes 6 & 7: 3 minutes.

Full-length PLBD2 (76 kDa) can be cleaved into N-terminal and C-terminal fragments according to the literature (PMID:17007843, PMID: 17105447).

This antibody recognizes both full-length and the N-terminal fragment of PLBD2.



Western blot - Anti-PLBD2 antibody [EPR21742] (ab216866)

All lanes : Anti-PLBD2 antibody [EPR21742] (ab216866) at 1/1000 dilution

Lane 1 : Mouse brain tissue lysate

Lane 2 : Mouse kidney tissue lysate

Lane 3 : Mouse liver tissue lysate

Lane 4 : Rat brain tissue lysate

Lane 5 : Rat liver tissue lysate

Lane 6 : Rat spleen tissue lysate

Lysates/proteins at 10 µg per lane.

Secondary

All lanes : Goat Anti-Rabbit IgG H&L (HRP) (ab97051) at 1/100000 dilution

Developed using the ECL technique.

Predicted band size: 65 kDa

Observed band size: 76 kDa

Additional bands at: 32/28 kDa (possible cleavage fragment)

Blocking and dilution buffer: 5% NFDM/TBST.

Exposure times.





Lanes 1-3: 6 seconds.

Lanes 4-6: 26 seconds.

Full-length PLBD2 (76 kDa) can be cleaved into N-terminal and C-terminal fragments according to the literature (PMID:17007843, PMID: 17105447).

This antibody recognizes both full-length and the N-terminal fragment of PLBD2.

Why choose a recombinant antibody?

 <p>Research with confidence Consistent and reproducible results</p>	 <p>Long-term and scalable supply Recombinant technology</p>
 <p>Success from the first experiment Confirmed specificity</p>	 <p>Ethical standards compliant Animal-free production</p>

Anti-PLBD2 antibody [EPR21742] (ab216866)

Please note: All products are "FOR RESEARCH USE ONLY. NOT FOR USE IN DIAGNOSTIC PROCEDURES"

Our Abpromise to you: Quality guaranteed and expert technical support

- Replacement or refund for products not performing as stated on the datasheet
- Valid for 12 months from date of delivery
- Response to your inquiry within 24 hours
- We provide support in Chinese, English, French, German, Japanese and Spanish
- Extensive multi-media technical resources to help you
- We investigate all quality concerns to ensure our products perform to the highest standards

If the product does not perform as described on this datasheet, we will offer a refund or replacement. For full details of the Abpromise, please visit <https://www.abcam.com/abpromise> or contact our technical team.

Terms and conditions

- Guarantee only valid for products bought direct from Abcam or one of our authorized distributors