


Product datasheet

Anti-PLCG 2 antibody - N-terminal ab227129

4 Images

Overview

Product name	Anti-PLCG 2 antibody - N-terminal
Description	Rabbit polyclonal to PLCG 2 - N-terminal
Host species	Rabbit
Tested applications	Suitable for: WB, ICC/IF, IHC-P
Species reactivity	Reacts with: Mouse, Human Predicted to work with: Rat 
Immunogen	Recombinant fragment within Human PLCG 2 (N terminal). The exact sequence is proprietary. Database link: P16885
Positive control	ICC/IF: HeLa cells. WB: Raji whole cell lysate; RAW 264.7 whole cell extract. IHC-P: BT474 xenograft tissue.
General notes	<p>Reproducibility is key to advancing scientific discovery and accelerating scientists' next breakthrough.</p> <p>Abcam is leading the way with our range of recombinant antibodies, knockout-validated antibodies and knockout cell lines, all of which support improved reproducibility.</p> <p>We are also planning to innovate the way in which we present recommended applications and species on our product datasheets, so that only applications & species that have been tested in our own labs, our suppliers or by selected trusted collaborators are covered by our Abpromise™ guarantee.</p> <p>In preparation for this, we have started to update the applications & species that this product is Abpromise guaranteed for.</p> <p>We are also updating the applications & species that this product has been “predicted to work with,” however this information is not covered by our Abpromise guarantee.</p> <p>Applications & species from publications and Abreviews that have not been tested in our own labs or in those of our suppliers are not covered by the Abpromise guarantee.</p> <p>Please check that this product meets your needs before purchasing. If you have any questions, special requirements or concerns, please send us an inquiry and/or contact our Support team ahead of purchase. Recommended alternatives for this product can be found below, as well as customer reviews and Q&As.</p>

Properties

Form	Liquid
Storage instructions	Shipped at 4°C. Store at +4°C short term (1-2 weeks). Upon delivery aliquot. Store at -20°C long term. Avoid freeze / thaw cycle.
Storage buffer	pH: 7.00 Preservative: 0.025% Proclin 300 Constituents: 79% PBS, 20% Glycerol (glycerin, glycerine)
Purity	Immunogen affinity purified
Clonality	Polyclonal
Isotype	IgG

Applications

Our [Abpromise guarantee](#) covers the use of **ab227129** in the following tested applications.

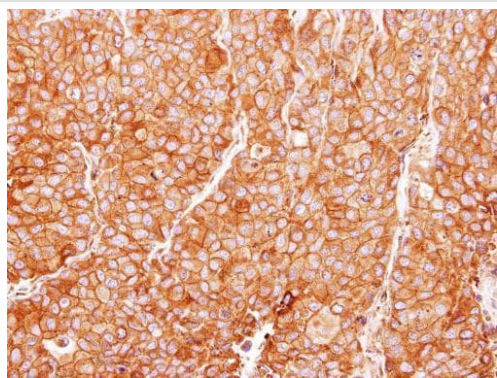
The application notes include recommended starting dilutions; optimal dilutions/concentrations should be determined by the end user.

Application	Abreviews	Notes
WB		1/500 - 1/20000. Predicted molecular weight: 148 kDa.
ICC/IF		1/100 - 1/1000.
IHC-P		1/100 - 1/1000.

Target

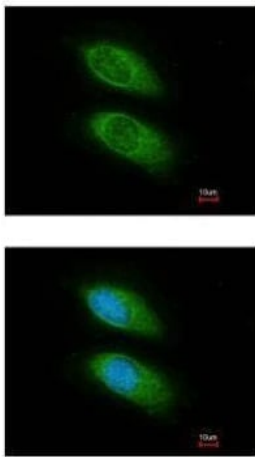
Function	The production of the second messenger molecules diacylglycerol (DAG) and inositol 1,4,5-trisphosphate (IP3) is mediated by activated phosphatidylinositol-specific phospholipase C enzymes. It is a crucial enzyme in transmembrane signaling.
Sequence similarities	Contains 1 C2 domain. Contains 1 PH domain. Contains 1 PI-PLC X-box domain. Contains 1 PI-PLC Y-box domain. Contains 2 SH2 domains. Contains 1 SH3 domain.
Post-translational modifications	Phosphorylated on tyrosine residues; upon ligand-induced activation of a variety of growth factor receptors and immune system receptors. Increases phospholipase activity.

Images



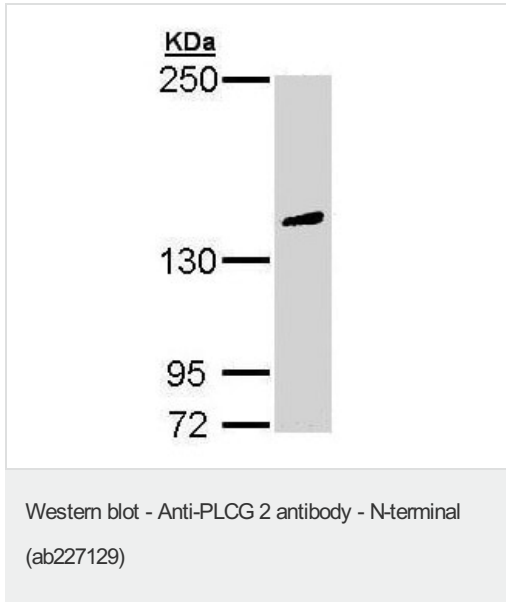
Paraffin-embedded BT474 xenograft tissue stained for PLCG 2 using ab227129 at 1/100 dilution in immunohistochemical analysis.

Immunohistochemistry (Formalin/PFA-fixed paraffin-embedded sections) - Anti-PLCG 2 antibody - N-terminal (ab227129)



Methanol-fixed HeLa (human epithelial cell line from cervix adenocarcinoma) cells stained for PLCG 2 (green) using ab227129 at 1/200 dilution in ICC/IF. Nuclear Counterstain: Hoechst 33342 (blue).

Immunocytochemistry/ Immunofluorescence - Anti-PLCG 2 antibody - N-terminal (ab227129)



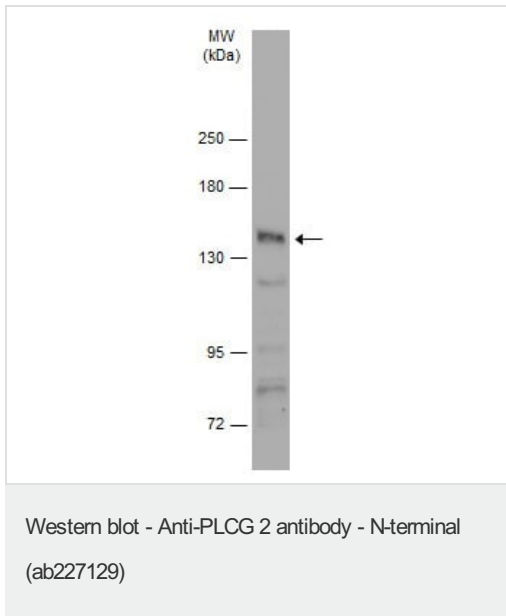
Anti-PLCG 2 antibody - N-terminal (ab227129) at 1/10000 dilution + Raji (human Burkitt's lymphoma cell line) whole cell lysate at 30 µg

Secondary

HRP-conjugated anti-rabbit IgG

Predicted band size: 148 kDa

5% SDS-PAGE gel.



Anti-PLCG 2 antibody - N-terminal (ab227129) at 1/500 dilution + RAW 264.7 (mouse macrophage cell line transformed with Abelson murine leukemia virus) whole cell extract at 30 µg

Secondary

HRP-conjugated anti-rabbit IgG

Predicted band size: 148 kDa

5% SDS-PAGE gel.

Please note: All products are "FOR RESEARCH USE ONLY. NOT FOR USE IN DIAGNOSTIC PROCEDURES"

Our Abpromise to you: Quality guaranteed and expert technical support

- Replacement or refund for products not performing as stated on the datasheet
- Valid for 12 months from date of delivery
- Response to your inquiry within 24 hours
- We provide support in Chinese, English, French, German, Japanese and Spanish
- Extensive multi-media technical resources to help you
- We investigate all quality concerns to ensure our products perform to the highest standards

If the product does not perform as described on this datasheet, we will offer a refund or replacement. For full details of the Abpromise, please visit <https://www.abcam.com/abpromise> or contact our technical team.

Terms and conditions

- Guarantee only valid for products bought direct from Abcam or one of our authorized distributors