

## Product datasheet

# Anti-PLCG 2 (phospho Y759) antibody [EP1406Y] ab51020

RabMAb<sup>®</sup>

[1 References](#) [2 Images](#)

### Overview

---

|                            |   |
|----------------------------|---|
| <b>Product name</b>        | Anti-PLCG 2 (phospho Y759) antibody [EP1406Y]   |
| <b>Description</b>         | Rabbit monoclonal [EP1406Y] to PLCG 2 (phospho Y759)  |
| <b>Host species</b>        | Rabbit  |
| <b>Tested applications</b> | <b>Suitable for:</b> ICC, WB<br><b>Unsuitable for:</b> Flow Cyt   |
| <b>Species reactivity</b>  | <b>Reacts with:</b> Human   |
| <b>Immunogen</b>           | Synthetic peptide. This information is proprietary to Abcam and/or its suppliers.   |
| <b>Positive control</b>    | Raji cell lysate.   |
| <b>General notes</b>       | <p>Our RabMAb<sup>®</sup> technology is a patented hybridoma-based technology for making rabbit monoclonal antibodies. For details on our patents, please refer to <a href="#">RabMAb<sup>®</sup> patents</a>.</p> <p>The Life Science industry has been in the grips of a reproducibility crisis for a number of years. Abcam is leading the way in addressing this with our range of recombinant monoclonal antibodies and knockout edited cell lines for gold-standard validation. Please check that this product meets your needs before purchasing.</p> <p>If you have any questions, special requirements or concerns, please send us an inquiry and/or contact our Support team ahead of purchase. Recommended alternatives for this product can be found below, along with publications, customer reviews and Q&amp;As</p> <p>Mouse, Rat: We have preliminary internal testing data to indicate this antibody may not react with these species. Please contact us for more information.</p> |

### Properties

---

|                             |   |
|-----------------------------|---|
| <b>Form</b>                 | Liquid  |
| <b>Storage instructions</b> | Shipped at 4°C. Store at -20°C. Stable for 12 months at -20°C.  |
| <b>Storage buffer</b>       | <p>pH: 7.20</p> <p>Preservative: 0.05% Sodium azide</p> <p>Constituents: 0.1% BSA, 40% Glycerol (glycerin, glycerine), 9.85% Tris glycine, 50% Tissue culture supernatant</p> |

|                     |                    |
|---------------------|--------------------|
| <b>Purity</b>       | Protein A purified |
| <b>Clonality</b>    | Monoclonal         |
| <b>Clone number</b> | EP1406Y            |
| <b>Isotype</b>      | IgG                |

## Applications

**The Abpromise guarantee** Our [Abpromise guarantee](#) covers the use of ab51020 in the following tested applications. The application notes include recommended starting dilutions; optimal dilutions/concentrations should be determined by the end user.

| Application | Abreviews | Notes  |
|-------------|-----------|--|
| ICC         |           | 1/50 - 1/100.  |
| WB          |           | 1/50000 - 1/100000. Detects a band of approximately 150 kDa (predicted molecular weight: 148 kDa). |

**Application notes** Is unsuitable for Flow Cyt.

## Target

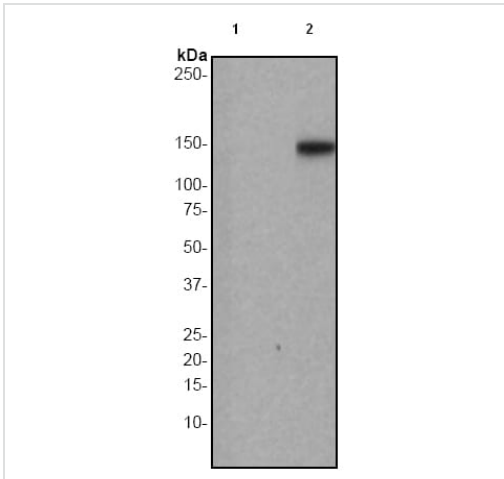
**Function** The production of the second messenger molecules diacylglycerol (DAG) and inositol 1,4,5-trisphosphate (IP3) is mediated by activated phosphatidylinositol-specific phospholipase C enzymes. It is a crucial enzyme in transmembrane signaling.

**Sequence similarities**

- Contains 1 C2 domain.
- Contains 1 PH domain.
- Contains 1 PI-PLC X-box domain.
- Contains 1 PI-PLC Y-box domain.
- Contains 2 SH2 domains.
- Contains 1 SH3 domain.

**Post-translational modifications** Phosphorylated on tyrosine residues; upon ligand-induced activation of a variety of growth factor receptors and immune system receptors. Increases phospholipase activity.

## Images



Western blot - Anti-PLCG 2 (phospho Y759) antibody [EP1406Y] (ab51020)

**All lanes :** Anti-PLCG 2 (phospho Y759) antibody [EP1406Y] (ab51020) at 1/100000 dilution

**Lane 1 :** Raji cell lysate, untreated

**Lane 2 :** Raji cell lysate, treated with pervanadate

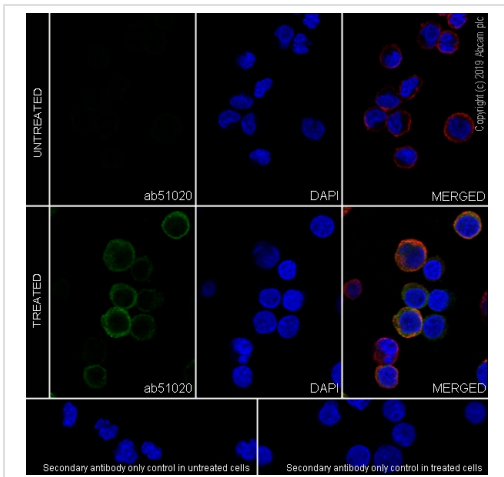
Lysates/proteins at 10 µg per lane.

**Secondary**

**All lanes :** Goat anti-rabbit HRP labeled at 1/2000 dilution

**Predicted band size:** 148 kDa

**Observed band size:** 150 kDa



Immunocytochemistry - Anti-PLCG 2 (phospho Y759) antibody [EP1406Y] (ab51020)

Immunocytochemistry analysis of Raji (human Burkitt's lymphoma B lymphocyte) labeling PLCG 2 with purified ab51020 at 1/50 dilution (4 µg/ml). Cells were fixed with 4% Paraformaldehyde and permeabilised with 0.1% tritonX-100. Goat anti rabbit IgG (Alexa Fluor® 488, [ab150077](#)) at 1/1000 (2 µg/ml) was used as the secondary antibody. [ab195889](#) Anti-alpha Tubulin antibody [DM1A] - Microtubule Marker (Alexa Fluor® 594) 1/200 (2.12 µg/ml) was used as counterstain. Nuclei were stained blue with DAPI. Negative control: PBS instead of the primary antibody.

**Please note:** All products are "FOR RESEARCH USE ONLY. NOT FOR USE IN DIAGNOSTIC PROCEDURES"

**Our Abpromise to you: Quality guaranteed and expert technical support**

- Replacement or refund for products not performing as stated on the datasheet
- Valid for 12 months from date of delivery
- Response to your inquiry within 24 hours
  
- We provide support in Chinese, English, French, German, Japanese and Spanish
- Extensive multi-media technical resources to help you
- We investigate all quality concerns to ensure our products perform to the highest standards

If the product does not perform as described on this datasheet, we will offer a refund or replacement. For full details of the Abpromise, please visit <https://www.abcam.com/abpromise> or contact our technical team.

### **Terms and conditions**

---

- Guarantee only valid for products bought direct from Abcam or one of our authorized distributors