


## Product datasheet

# Anti-PLCXD1 antibody ab168396

2 Images

### Overview

---

<b>Product name</b>	Anti-PLCXD1 antibody
<b>Description</b>	Mouse polyclonal to PLCXD1
<b>Host species</b>	Mouse
<b>Tested applications</b>	<b>Suitable for:</b> WB, ICC/IF
<b>Species reactivity</b>	<b>Reacts with:</b> Human <b>Predicted to work with:</b> Chimpanzee, Rhesus monkey, Gorilla, Orangutan 
<b>Immunogen</b>	Recombinant full length protein, corresponding to amino acids 1-323 of Human PLCXD1 (NP_060860.1).
<b>Positive control</b>	PLCXD1 transfected 293T cell line lysate, HeLa cells
<b>General notes</b>	<p>Reproducibility is key to advancing scientific discovery and accelerating scientists' next breakthrough.</p> <p>Abcam is leading the way with our range of recombinant antibodies, knockout-validated antibodies and knockout cell lines, all of which support improved reproducibility.</p> <p>We are also planning to innovate the way in which we present recommended applications and species on our product datasheets, so that only applications &amp; species that have been tested in our own labs, our suppliers or by selected trusted collaborators are covered by our Abpromise™ guarantee.</p> <p>In preparation for this, we have started to update the applications &amp; species that this product is Abpromise guaranteed for.</p> <p>We are also updating the applications &amp; species that this product has been “predicted to work with,” however this information is not covered by our Abpromise guarantee.</p> <p>Applications &amp; species from publications and Abreviews that have not been tested in our own labs or in those of our suppliers are not covered by the Abpromise guarantee.</p> <p>Please check that this product meets your needs before purchasing. If you have any questions, special requirements or concerns, please send us an inquiry and/or contact our Support team ahead of purchase. Recommended alternatives for this product can be found below, as well as customer reviews and Q&amp;As.</p>

### Properties

---

<b>Form</b>	Liquid
-------------	--------

<b>Storage instructions</b>	Shipped at 4°C. Store at +4°C short term (1-2 weeks). Upon delivery aliquot. Store at -20°C long term.
<b>Storage buffer</b>	pH: 7.4 Constituent: 99% PBS
<b>Purity</b>	Protein A purified
<b>Clonality</b>	Polyclonal
<b>Isotype</b>	IgG

## Applications

Our [Abpromise guarantee](#) covers the use of **ab168396** in the following tested applications.

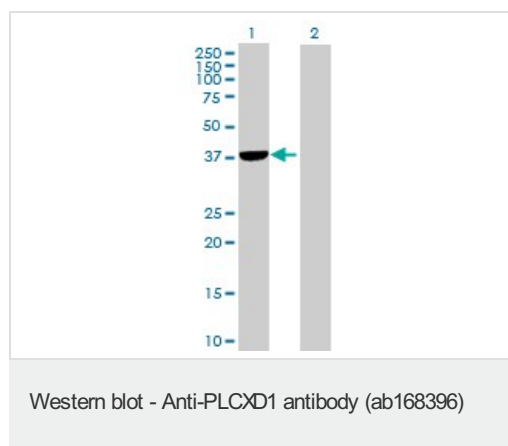
The application notes include recommended starting dilutions; optimal dilutions/concentrations should be determined by the end user.

Application	Abreviews	Notes
WB		Use a concentration of 1 µg/ml. Predicted molecular weight: 37 kDa.
ICC/IF		Use a concentration of 10 µg/ml.

## Target

**Sequence similarities** Contains 1 PI-PLC X-box domain.

## Images

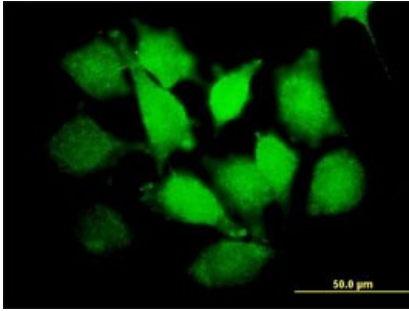


**All lanes :** Anti-PLCXD1 antibody (ab168396) at 1 µg/ml

**Lane 1 :** PLCXD1 transfected 293T cell line lysate

**Lane 2 :** Non-transfected 293T cell line lysate

**Predicted band size:** 37 kDa



Immunofluorescent analysis of HeLa cells labeling PLCXD1 with ab168396 at 10 µg/ml.

Immunocytochemistry/ Immunofluorescence - Anti-PLCXD1 antibody (ab168396)

**Please note:** All products are "FOR RESEARCH USE ONLY. NOT FOR USE IN DIAGNOSTIC PROCEDURES"

### **Our Abpromise to you: Quality guaranteed and expert technical support**

---

- Replacement or refund for products not performing as stated on the datasheet
- Valid for 12 months from date of delivery
- Response to your inquiry within 24 hours
- We provide support in Chinese, English, French, German, Japanese and Spanish
- Extensive multi-media technical resources to help you
- We investigate all quality concerns to ensure our products perform to the highest standards

If the product does not perform as described on this datasheet, we will offer a refund or replacement. For full details of the Abpromise, please visit <https://www.abcam.com/abpromise> or contact our technical team.

### **Terms and conditions**

---

- Guarantee only valid for products bought direct from Abcam or one of our authorized distributors