


Product datasheet

Anti-PLD2 (phospho Y169) antibody ab192804

[2 Images](#)

Overview

Product name	Anti-PLD2 (phospho Y169) antibody
Description	Rabbit polyclonal to PLD2 (phospho Y169)
Host species	Rabbit
Tested applications	Suitable for: WB, IHC-P
Species reactivity	Reacts with: Human Predicted to work with: Mouse, Rat 
Immunogen	Synthetic peptide corresponding to Human PLD2 (phospho Y169) conjugated to keyhole limpet haemocyanin. Peptide sequence around phosphorylation site of tyrosine 169(E-N-Y(p)-L-N). Database link: O14939
Positive control	Extracts of Jurkat cells treated with TNF cell lysate. Human brain tissue.
General notes	<p>Reproducibility is key to advancing scientific discovery and accelerating scientists' next breakthrough.</p> <p>Abcam is leading the way with our range of recombinant antibodies, knockout-validated antibodies and knockout cell lines, all of which support improved reproducibility.</p> <p>We are also planning to innovate the way in which we present recommended applications and species on our product datasheets, so that only applications & species that have been tested in our own labs, our suppliers or by selected trusted collaborators are covered by our Abpromise™ guarantee.</p> <p>In preparation for this, we have started to update the applications & species that this product is Abpromise guaranteed for.</p> <p>We are also updating the applications & species that this product has been “predicted to work with,” however this information is not covered by our Abpromise guarantee.</p> <p>Applications & species from publications and Abreviews that have not been tested in our own labs or in those of our suppliers are not covered by the Abpromise guarantee.</p> <p>Please check that this product meets your needs before purchasing. If you have any questions, special requirements or concerns, please send us an inquiry and/or contact our Support team ahead of purchase. Recommended alternatives for this product can be found below, as well as customer reviews and Q&As.</p>

Properties

Form	Liquid
Storage instructions	Shipped at 4°C. Store at +4°C short term (1-2 weeks). Upon delivery aliquot. Store at -20°C long term. Avoid freeze / thaw cycle.
Storage buffer	pH: 7.40 Preservative: 0.02% Sodium azide Constituents: 49% PBS, 50% Glycerol (glycerin, glycerine), 0.87% Sodium chloride
Purity	Immunogen affinity purified
Purification notes	ab192804 was purified by affinity-chromatography using epitope-specific phosphopeptide. Non-phospho specific antibodies were removed by chromatography using non-phosphopeptide.
Clonality	Polyclonal
Isotype	IgG

Applications

Our [Abpromise guarantee](#) covers the use of **ab192804** in the following tested applications.

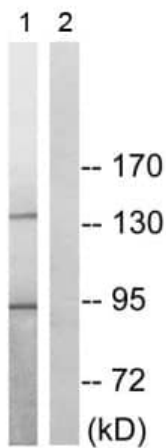
The application notes include recommended starting dilutions; optimal dilutions/concentrations should be determined by the end user.

Application	Abreviews	Notes
WB		1/500 - 1/1000. Detects a band of approximately 95 kDa (predicted molecular weight: 106 kDa). Incubate membranes diluted antibody in 2.5% nonfat milk, 1X TBS, 0.1% Tween-20 at 4°C with gentle shaking, overnight.
IHC-P		1/50 - 1/100.

Target

Function	May have a role in signal-induced cytoskeletal regulation and/or endocytosis.
Tissue specificity	Ubiquitous.
Sequence similarities	Belongs to the phospholipase D family. Contains 1 PH domain. Contains 2 PLD phosphodiesterase domains. Contains 1 PX (phox homology) domain.
Cellular localization	Membrane.

Images



Western blot - Anti-PLD2 (phospho Y169) antibody (ab192804)

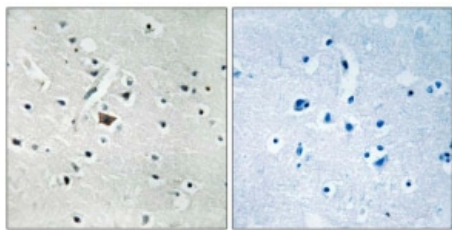
All lanes : Anti-PLD2 (phospho Y169) antibody (ab192804) at 1/500 dilution

Lane 1 : Jurkat cells treated with TNF lysate

Lane 2 : Jurkat cell treated with TNF lysate with Antigen-specific peptide

Predicted band size: 106 kDa

Additional bands at: 95 kDa. We are unsure as to the identity of these extra bands.



Immunohistochemistry (Formalin/PFA-fixed paraffin-embedded sections) - Anti-PLD2 (phospho Y169) antibody (ab192804)

Immunohistochemical analysis of formalin fixed paraffin embedded human brain tissue labeling PLD2 (phospho Y169) with ab192804 at 1/50 dilution (left) and preincubated with blocking peptide (right)

Please note: All products are "FOR RESEARCH USE ONLY. NOT FOR USE IN DIAGNOSTIC PROCEDURES"

Our Promise to you: Quality guaranteed and expert technical support

- Replacement or refund for products not performing as stated on the datasheet
- Valid for 12 months from date of delivery
- Response to your inquiry within 24 hours
- We provide support in Chinese, English, French, German, Japanese and Spanish
- Extensive multi-media technical resources to help you
- We investigate all quality concerns to ensure our products perform to the highest standards

If the product does not perform as described on this datasheet, we will offer a refund or replacement. For full details of the Abpromise, please visit <https://www.abcam.com/abpromise> or contact our technical team.

Terms and conditions

- Guarantee only valid for products bought direct from Abcam or one of our authorized distributors