

Product datasheet

Anti-PLEKHM1 antibody ab204437

★★★★★ 1 Abreviews 2 Images

Overview

| | |
|----------------------------|-------------------------------------------------------------------------------------------------------------------------------------------------------------------------------------------------------------------------------------------------------------|
| Product name | Anti-PLEKHM1 antibody |
| Description | Rabbit polyclonal to PLEKHM1 |
| Host species | Rabbit |
| Tested applications | Suitable for: IHC-P, ICC/IF |
| Species reactivity | Reacts with: Human Predicted to work with: Mouse, Rat |
| Immunogen | Recombinant fragment corresponding to Human PLEKHM1 aa 868-920. Sequence: PARIHNWDLTKRPICRQALKFLTQIRAQPLINLQMVNAS LYEHVERMHL IGR Database link: Q9Y4G2 Run BLAST with Run BLAST with |
| Positive control | Human kidney tissue; U2 OS cells. |

Properties

| | |
|-----------------------------|-----------------------------------------------------------------------------------------------------------------------------------|
| Form | Liquid |
| Storage instructions | Shipped at 4°C. Store at +4°C short term (1-2 weeks). Upon delivery aliquot. Store at -20°C long term. Avoid freeze / thaw cycle. |
| Storage buffer | pH: 7.2 Preservative: 0.02% Sodium azide Constituents: 40% Glycerol, 59% PBS |
| Purity | Immunogen affinity purified |
| Clonality | Polyclonal |
| Isotype | IgG |

Applications

Our [Abpromise guarantee](#) covers the use of **ab204437** in the following tested applications.

The application notes include recommended starting dilutions; optimal dilutions/concentrations should be determined by the end user.

| Application | Abreviews | Notes |
|-------------|-----------|-----------------------------------------------------------------------------------------------------------------------------|
| IHC-P | | 1/20 - 1/50. Perform heat mediated antigen retrieval with citrate buffer pH 6 before commencing with IHC staining protocol. |
| ICC/IF | | Use a concentration of 1 - 4 µg/ml. |

Target

Function

Involved in vesicular transport in the osteoclast (By similarity). May have a role in sialyl-lex-mediated transduction of apoptotic signals.

Tissue specificity

Expressed in placenta, liver, prostate, thymus, spleen, ovary, colon, colon carcinoma and peripheral blood lymphocytes (PBL). Weakly expressed in brain, lung, kidney, and testis. No expression in heart, skeletal muscle, pancreas and small intestine. Predominantly expressed in the breast carcinoma cell line MCF-7.

Involvement in disease

Defects in PLEKHM1 are the cause of osteopetrosis autosomal recessive type 6 (OPTB6) [MIM:611497]; also known as autosomal recessive osteopetrosis intermediate form. Osteopetrosis is a rare genetic disease characterized by abnormally dense bone, due to defective resorption of immature bone. The disorder occurs in two forms: a severe autosomal recessive form occurring in utero, infancy, or childhood, and a benign autosomal dominant form occurring in adolescence or adulthood. Autosomal recessive osteopetrosis is usually associated with normal or elevated amount of non-functional osteoclasts.

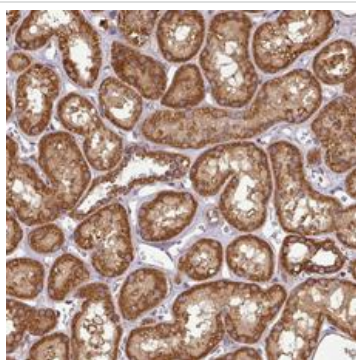
Sequence similarities

Contains 2 PH domains.
Contains 1 phorbol-ester/DAG-type zinc finger.
Contains 1 RUN domain.

Cellular localization

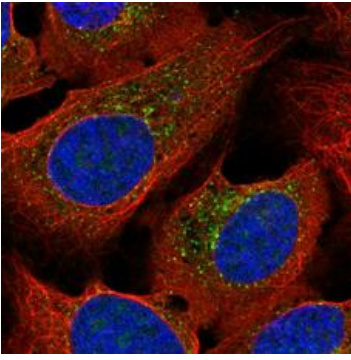
Cytoplasm.

Images



Immunohistochemical analysis of paraffin-embedded Human kidney tissue labeling PLEKHM1 with ab204437 at 1/20 dilution.

Immunohistochemistry (Formalin/PFA-fixed paraffin-embedded sections) - Anti-PLEKHM1 antibody (ab204437)



Immunofluorescent analysis of U2 OS cells (PFA-fixed/Triton X-100 permeabilized) labeling PLEKHM1 with ab204437 at 4 µg/ml (green).

Immunocytochemistry/ Immunofluorescence - Anti-
PLEKHM1 antibody (ab204437)

Please note: All products are "FOR RESEARCH USE ONLY. NOT FOR USE IN DIAGNOSTIC PROCEDURES"

Our Abpromise to you: Quality guaranteed and expert technical support

- Replacement or refund for products not performing as stated on the datasheet
- Valid for 12 months from date of delivery
- Response to your inquiry within 24 hours
- We provide support in Chinese, English, French, German, Japanese and Spanish
- Extensive multi-media technical resources to help you
- We investigate all quality concerns to ensure our products perform to the highest standards

If the product does not perform as described on this datasheet, we will offer a refund or replacement. For full details of the Abpromise, please visit <https://www.abcam.com/abpromise> or contact our technical team.

Terms and conditions

- Guarantee only valid for products bought direct from Abcam or one of our authorized distributors