

Product datasheet

Anti-**PLEKHM2** antibody **ab91581**

2 Images

Overview

| | |
|----------------------------|--|
| Product name | Anti- PLEKHM2 antibody |
| Description | Rabbit polyclonal to PLEKHM2 |
| Host species | Rabbit |
| Specificity | ab91581 is specific for PLEKHM2 and will not recognize the other PLEKHM proteins. |
| Tested applications | Suitable for: ICC/IF, WB, ELISA |
| Species reactivity | Reacts with: Mouse, Rat, Human |
| Immunogen | A 17 amino acid synthetic peptide from near the carboxy terminus of Human PLEKHM2 (CAH72018). |
| Positive control | Rat brain tissue lysate |

Properties

| | |
|-----------------------------|--|
| Form | Liquid |
| Storage instructions | Shipped at 4°C. Store at +4°C. |
| Storage buffer | Preservative: 0.02% Sodium azide Constituent: PBS |
| Purity | Immunogen affinity purified |
| Clonality | Polyclonal |
| Isotype | IgG |

Applications

Our [Abpromise guarantee](#) covers the use of **ab91581** in the following tested applications.

The application notes include recommended starting dilutions; optimal dilutions/concentrations should be determined by the end user.

| Application | Abreviews | Notes |
|-------------|-----------|-------|
| ICC/IF | | |
| WB | | |

| Application | Abreviews | Notes |
|-------------|-----------|-------|
|-------------|-----------|-------|

ELISA

Application notes

ELISA: Use at an assay dependent dilution.

WB: Use at a concentration of 0.5 - 1 µg/ml. Predicted molecular weight: 169 kDa.

Not yet tested in other applications.

Optimal dilutions/concentrations should be determined by the end user.

Target

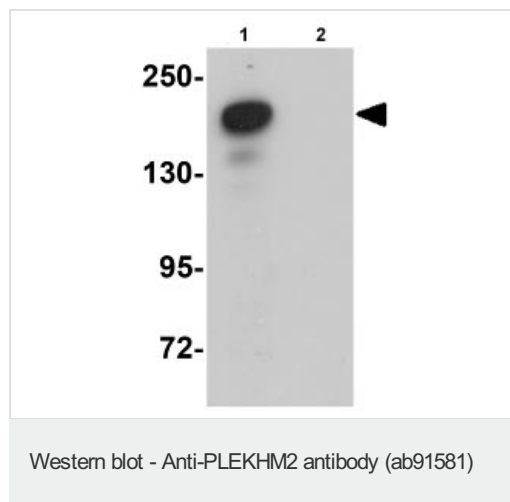
Relevance

PLEKHM2, also known as SKIP, is a member of the M family of Pleckstrin homology domain-containing proteins. While little is known of PLEKHM2, a recent study examining differential gene expression in human hematopoietic stem cells has shown it to be specifically expressed in stem cells, suggesting that PLEKHM2 may play a role in erythroid commitment and development. Other studies have shown that PLEKHM2 is required for interaction with the Salmonella virulence factor SifA for Salmonella pathogenesis, suggesting that PLEKHM2 has cellular roles other than in the developing embryo.

Cellular localization

Cytoplasmic

Images



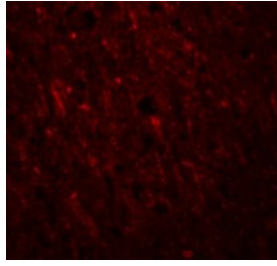
All lanes : Anti-PLEKHM2 antibody (ab91581) at 0.5 µg/ml

Lane 1 : Rat brain tissue lysate

Lane 2 : Rat brain tissue lysate with blocking peptide

Lysates/proteins at 15 µg per lane.

Predicted band size: 169 kDa



Immunofluorescence of PLEKHM2 in Human Brain cells using ab91581 at 20 ug/ml.

Immunocytochemistry/ Immunofluorescence - Anti-
PLEKHM2 antibody (ab91581)

Please note: All products are "FOR RESEARCH USE ONLY. NOT FOR USE IN DIAGNOSTIC PROCEDURES"

Our Abpromise to you: Quality guaranteed and expert technical support

- Replacement or refund for products not performing as stated on the datasheet
- Valid for 12 months from date of delivery
- Response to your inquiry within 24 hours
- We provide support in Chinese, English, French, German, Japanese and Spanish
- Extensive multi-media technical resources to help you
- We investigate all quality concerns to ensure our products perform to the highest standards

If the product does not perform as described on this datasheet, we will offer a refund or replacement. For full details of the Abpromise, please visit <https://www.abcam.com/abpromise> or contact our technical team.

Terms and conditions

- Guarantee only valid for products bought direct from Abcam or one of our authorized distributors