



Product datasheet

Anti-PLET1 antibody ab235541

3 Images

Overview

Product name	Anti-PLET1 antibody
Description	Rabbit polyclonal to PLET1
Host species	Rabbit
Tested applications	Suitable for: IHC-P, WB
Species reactivity	Reacts with: Mouse, Human
Immunogen	<p>Recombinant full length protein corresponding to Mouse PLET1 aa 28-218. Mature full length chain without signal peptide, without propeptide.</p> <p>Sequence:</p> <p>SDNGSCVVLDNIYTS DILEISTMANVSGGDVITYTVPV NDSVSAVILKA VKEDDSPVGTWSGTYEKCNDSSVYYNLTSQSQSVFQ TNWTVPTSEDVTKV NLQVLIVNRTASKSSVKMEVQPSASTPIPESETSQ TINTTPTVN TAK TTAKDTANTTAVTTANTTANTTAVTTAKTTAKSLAIRTLG S</p> <p>Database link: Q8VEN2-1</p> <p style="text-align: right;">  Run BLAST with  Run BLAST with </p>
Positive control	WB: L-929 and U-251 MG whole cell lysate; Mouse muscle tissue lysate. IHC-P: Human prostate and breast cancer tissue.

Properties

Form	Liquid
Storage instructions	Shipped at 4°C. Store at +4°C short term (1-2 weeks). Upon delivery aliquot. Store at -20°C long term. Avoid freeze / thaw cycle.
Storage buffer	<p>pH: 7.4</p> <p>Preservative: 0.03% Proclin</p> <p>Constituents: 50% Glycerol, PBS</p>
Purity	Protein G purified
Purification notes	Purity >95%

Clonality Polyclonal
Isotype IgG

Applications

Our [Abpromise guarantee](#) covers the use of **ab235541** in the following tested applications.

The application notes include recommended starting dilutions; optimal dilutions/concentrations should be determined by the end user.

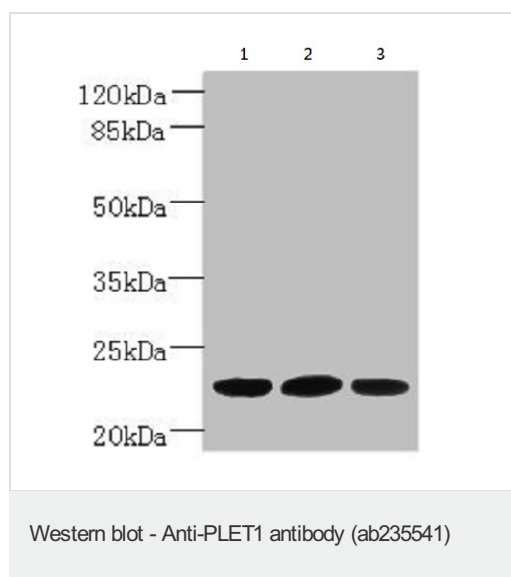
Application	Abreviews	Notes
IHC-P		1/20 - 1/200.
WB		1/500 - 1/2000.

Target

Function May participate in the wound response during the healing process, and promote wound repair.

Cellular localization Membrane.

Images



All lanes : Anti-PLET1 antibody (ab235541) at 1/500 dilution

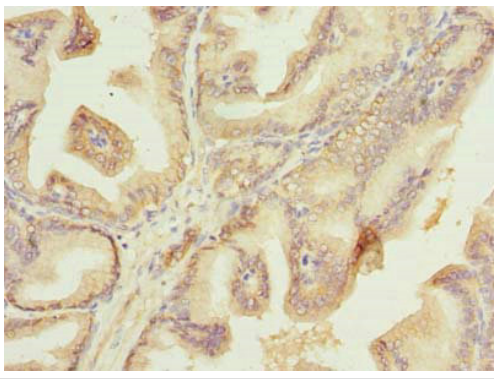
Lane 1 : L-929 (Mouse connective tissue fibroblast cell line) whole cell lysate

Lane 2 : U-251 MG (Human brain glioma cell line) whole cell lysate

Lane 3 : Mouse muscle tissue lysate

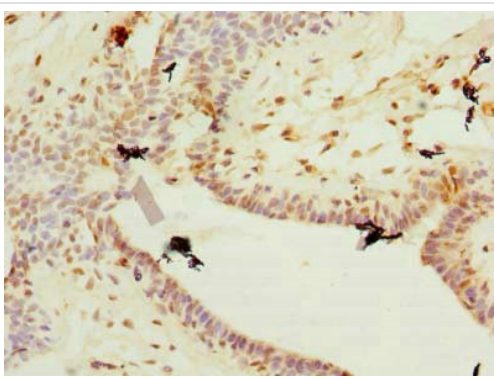
Secondary

All lanes : Goat polyclonal to Rabbit IgG at 1/10000 dilution



Immunohistochemistry (Formalin/PFA-fixed paraffin-embedded sections) - Anti-PLET1 antibody (ab235541)

Paraffin-embedded human prostate cancer tissue stained for PLET1 with ab235541 (1/100 dilution) in immunohistochemical analysis.



Immunohistochemistry (Formalin/PFA-fixed paraffin-embedded sections) - Anti-PLET1 antibody (ab235541)

Paraffin-embedded human breast cancer tissue stained for PLET1 with ab235541 (1/100 dilution) in immunohistochemical analysis.

Please note: All products are "FOR RESEARCH USE ONLY. NOT FOR USE IN DIAGNOSTIC PROCEDURES"

Our Abpromise to you: Quality guaranteed and expert technical support

- Replacement or refund for products not performing as stated on the datasheet
- Valid for 12 months from date of delivery
- Response to your inquiry within 24 hours

- We provide support in Chinese, English, French, German, Japanese and Spanish
- Extensive multi-media technical resources to help you
- We investigate all quality concerns to ensure our products perform to the highest standards

If the product does not perform as described on this datasheet, we will offer a refund or replacement. For full details of the Abpromise, please visit <https://www.abcam.com/abpromise> or contact our technical team.

Terms and conditions

- Guarantee only valid for products bought direct from Abcam or one of our authorized distributors