




## Product datasheet

# Anti-Plexin A1 antibody [7B8H9] ab233826

3 Images

### Overview

<b>Product name</b>	Anti-Plexin A1 antibody [7B8H9]
<b>Description</b>	Mouse monoclonal [7B8H9] to Plexin A1
<b>Host species</b>	Mouse
<b>Tested applications</b>	<b>Suitable for:</b> WB, Flow Cyt
<b>Species reactivity</b>	<b>Reacts with:</b> Human <b>Predicted to work with:</b> Mouse 
<b>Immunogen</b>	Recombinant fragment corresponding to Human Plexin A1 aa 1100-1200. Expressed in E.coli. Sequence: TTMVCRAPSVANPVRSPPELGERPDELGFVMDNVRSLLV LNSTSFLYYPD PVLEPLSPTGLLELKPSSPLILKGRNLLPPAPGNSRLNYTV LIGSTPCTL T  Database link: <a href="#">Q9UIW</a>   <a href="#">Run BLAST with</a>  <a href="#">Run BLAST with</a>
<b>Positive control</b>	WB: Recombinant human Plexin A1 (AA: 1100-1200) and Plexin A1 (AA: 1100-1200)-hlgGFc transfected HEK-293 whole cell lysate. Flow: HeLa cells.
<b>General notes</b>	<p>Reproducibility is key to advancing scientific discovery and accelerating scientists' next breakthrough.</p> <p>Abcam is leading the way with our range of recombinant antibodies, knockout-validated antibodies and knockout cell lines, all of which support improved reproducibility.</p> <p>We are also planning to innovate the way in which we present recommended applications and species on our product datasheets, so that only applications &amp; species that have been tested in our own labs, our suppliers or by selected trusted collaborators are covered by our Abpromise™ guarantee.</p> <p>In preparation for this, we have started to update the applications &amp; species that this product is Abpromise guaranteed for.</p> <p>We are also updating the applications &amp; species that this product has been “predicted to work with,” however this information is not covered by our Abpromise guarantee.</p> <p>Applications &amp; species from publications and Abreviews that have not been tested in our own labs or in those of our suppliers are not covered by the Abpromise guarantee.</p> <p>Please check that this product meets your needs before purchasing. If you have any questions,</p>

special requirements or concerns, please send us an inquiry and/or contact our Support team ahead of purchase. Recommended alternatives for this product can be found below, as well as customer reviews and Q&As.

## Properties

---

<b>Form</b>	Liquid
<b>Storage instructions</b>	Shipped at 4°C. Store at +4°C short term (1-2 weeks). Upon delivery aliquot. Store at -20°C long term. Avoid freeze / thaw cycle.
<b>Storage buffer</b>	Preservative: 0.05% Sodium azide Constituent: PBS
<b>Purity</b>	Protein G purified
<b>Clonality</b>	Monoclonal
<b>Clone number</b>	7B8H9
<b>Isotype</b>	IgG2b

## Applications

---

Our [Abpromise guarantee](#) covers the use of **ab233826** in the following tested applications.

The application notes include recommended starting dilutions; optimal dilutions/concentrations should be determined by the end user.

Application	Abreviews	Notes
WB		1/500 - 1/2000.
Flow Cyt		1/200 - 1/400.

---

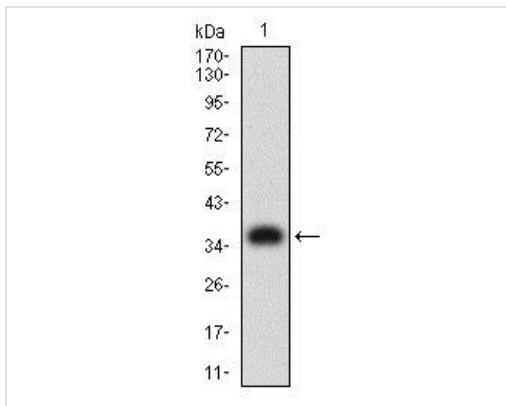
## Target

---

<b>Relevance</b>	Function: Coreceptor for SEMA3A, SEMA3C, SEMA3F and SEMA6D. Necessary for signaling by class 3 semaphorins and subsequent remodeling of the cytoskeleton. Plays a role in axon guidance, invasive growth and cell migration. Class 3 semaphorins bind to a complex composed of a neuropilin and a plexin. The plexin modulates the affinity of the complex for specific semaphorins, and its cytoplasmic domain is required for the activation of down-stream signaling events in the cytoplasm. Tissue specificity: Detected in fetal brain, lung, liver and kidney. Similarity: Belongs to the plexin family. Contains 4 IPT/TIG domains. Contains 1 Sema domain.
<b>Cellular localization</b>	Cell Membrane

## Images

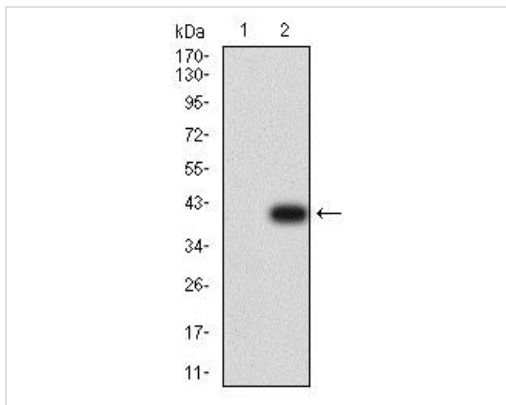
---



Western blot - Anti-Plexin A1 antibody [7B8H9] (ab233826)

Anti-Plexin A1 antibody [7B8H9] (ab233826) at 1/500 dilution + Recombinant human Plexin A1 (AA: 1100-1200) protein.

Developed using the ECL technique.



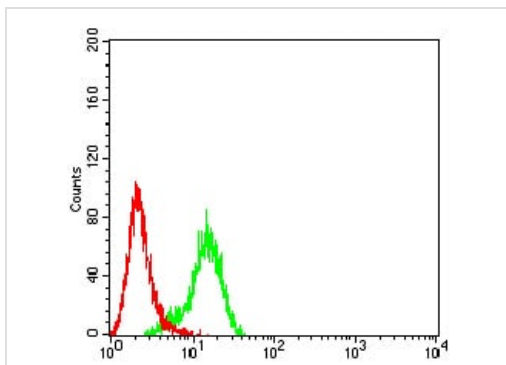
Western blot - Anti-Plexin A1 antibody [7B8H9] (ab233826)

**All lanes :** Anti-Plexin A1 antibody [7B8H9] (ab233826) at 1/500 dilution

**Lane 1 :** HEK-293 (human epithelial cell line from embryonic kidney) whole cell lysate

**Lane 2 :** Plexin A1 (AA: 1100-1200)-hlgGFc transfected HEK-293 whole cell lysate

Developed using the ECL technique.



Flow Cytometry - Anti-Plexin A1 antibody [7B8H9] (ab233826)

Flow cytometric analysis of HeLa (human epithelial cell line from cervix adenocarcinoma) cell line labeling Plexin A1 with ab233826 at 1/200 dilution (green) compared with a negative control (red).

**Please note:** All products are "FOR RESEARCH USE ONLY. NOT FOR USE IN DIAGNOSTIC PROCEDURES"

## **Our Abpromise to you: Quality guaranteed and expert technical support**

---

- Replacement or refund for products not performing as stated on the datasheet
- Valid for 12 months from date of delivery
- Response to your inquiry within 24 hours
  
- We provide support in Chinese, English, French, German, Japanese and Spanish
- Extensive multi-media technical resources to help you
- We investigate all quality concerns to ensure our products perform to the highest standards

If the product does not perform as described on this datasheet, we will offer a refund or replacement. For full details of the Abpromise, please visit <https://www.abcam.com/abpromise> or contact our technical team.

## **Terms and conditions**

---

- Guarantee only valid for products bought direct from Abcam or one of our authorized distributors