

Product datasheet

Anti-Plexin A2 antibody ab39357

★★★★☆ 3 Abreviews 4 References 3 Images

Overview

Product name	Anti-Plexin A2 antibody
Description	Rabbit polyclonal to Plexin A2
Host species	Rabbit
Tested applications	Suitable for: WB, IHC-P, IHC-FoFr
Species reactivity	Reacts with: Mouse Predicted to work with: Human Does not react with: Rat
Immunogen	Synthetic peptide corresponding to Mouse Plexin A2 aa 300-400. (Peptide available as ab39356)
Positive control	This antibody gave a positive signal in Mouse Brain (0 Day) Tissue Lysate

Properties

Form	Liquid
Storage instructions	Shipped at 4°C. Store at +4°C short term (1-2 weeks). Upon delivery aliquot. Store at -20°C or -80°C. Avoid freeze / thaw cycle.
Storage buffer	Preservative: 0.02% Sodium Azide Constituents: 1% BSA, PBS, pH 7.4
Purity	Immunogen affinity purified
Clonality	Polyclonal
Isotype	IgG

Applications

Our [Abpromise guarantee](#) covers the use of **ab39357** in the following tested applications.

The application notes include recommended starting dilutions; optimal dilutions/concentrations should be determined by the end user.

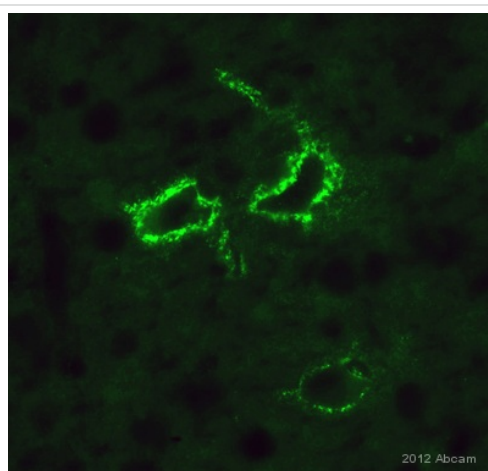
Application	Abreviews	Notes
WB		Use a concentration of 2 µg/ml. Detects a band of approximately 230 kDa (predicted molecular weight: 212 kDa).

Application	Abreviews	Notes
IHC-P		1/100.
IHC-FoFr	★★★★☆	1/300.

Target

Function	Coreceptor for SEMA3A. Necessary for signaling by class 3 semaphorins and subsequent remodeling of the cytoskeleton. Plays a role in axon guidance, invasive growth and cell migration. Class 3 semaphorins bind to a complex composed of a neuropilin and a plexin. The plexin modulates the affinity of the complex for specific semaphorins, and its cytoplasmic domain is required for the activation of down-stream signaling events in the cytoplasm.
Tissue specificity	Detected in fetal brain.
Sequence similarities	Belongs to the plexin family. Contains 4 IPT/TIG domains. Contains 1 Sema domain.
Cellular localization	Membrane.

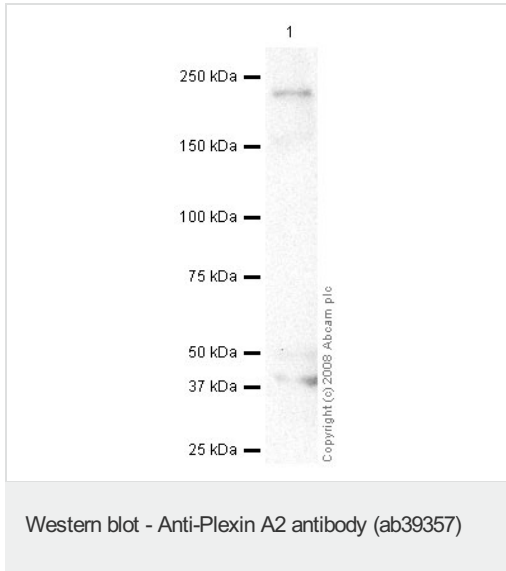
Images



IHC-FoFr image of Plexin A2 staining on mouse cortex (Lamina V) using ab39357 (1/300). The sections used came from animals perfused fixed with Paraformaldehyde 4% with 15% of a solution of saturated picric acid, in phosphate buffer 0.1M. Following postfixation in the same fixative overnight, the brains were cryoprotected in sucrose 30% overnight. Brains were then cut using a cryostat and the immunostainings were performed using the 'free floating' technique.

Immunohistochemistry (PFA perfusion fixed frozen sections) - Anti-Plexin A2 antibody (ab39357)

This image is courtesy of an abreview submitted by Sophie Pezet, ESPCI, France



Anti-Plexin A2 antibody (ab39357) at 2 µg/ml + Mouse brain tissue lysate - total protein (0 days) (ab7188) at 20 µg

Secondary

Goat Polyclonal to rabbit IgG - H&L - Pre adsorbed (HRP) at 1/3000 dilution

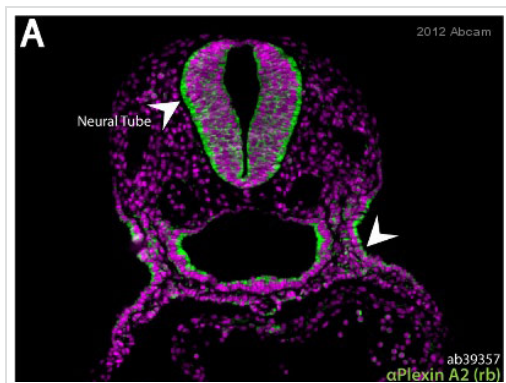
Performed under reducing conditions.

Predicted band size: 212 kDa

Observed band size: 230 kDa

[why is the actual band size different from the predicted?](#)

Plexin A2 contains a number of potential glycosylation sites (SwissProt) which may explain its migration at a higher molecular weight than predicted.



Immunofluorescence analysis of mouse neural tube cells, staining Plexin A2 (green) with ab39357.

Cells were fixed before being blocked with 10% serum for 1 hour at 26°C. Samples were incubated with primary antibody (1/100 in diluent) for 12 hours at 4°C. An AlexaFluor®488-conjugated goat anti-rabbit polyclonal IgG (1/500) was used as the secondary antibody.

Immunocytochemistry/ Immunofluorescence - Anti-Plexin A2 antibody (ab39357)

This image is courtesy of an anonymous Abreview

Please note: All products are "FOR RESEARCH USE ONLY. NOT FOR USE IN DIAGNOSTIC PROCEDURES"

Our Abpromise to you: Quality guaranteed and expert technical support

- Replacement or refund for products not performing as stated on the datasheet

- Valid for 12 months from date of delivery
- Response to your inquiry within 24 hours

- We provide support in Chinese, English, French, German, Japanese and Spanish
- Extensive multi-media technical resources to help you
- We investigate all quality concerns to ensure our products perform to the highest standards

If the product does not perform as described on this datasheet, we will offer a refund or replacement. For full details of the Abpromise, please visit <https://www.abcam.com/abpromise> or contact our technical team.

Terms and conditions

- Guarantee only valid for products bought direct from Abcam or one of our authorized distributors