

Product datasheet

Anti-PLK3 antibody ab67922

★★★★★ 3 Abreviews 1 References 1 Image

Overview

Product name	Anti-PLK3 antibody
Description	Mouse polyclonal to PLK3
Host species	Mouse
Tested applications	Suitable for: WB
Species reactivity	Reacts with: Recombinant fragment
Immunogen	PLK3 (NP_004064.2, 1 a.a. ~ 646 a.a) full-length human protein.
Positive control	PLK3 transfected 293T cell lysate
General notes	<p>The Life Science industry has been in the grips of a reproducibility crisis for a number of years. Abcam is leading the way in addressing this with our range of recombinant monoclonal antibodies and knockout edited cell lines for gold-standard validation. Please check that this product meets your needs before purchasing.</p> <p>If you have any questions, special requirements or concerns, please send us an inquiry and/or contact our Support team ahead of purchase. Recommended alternatives for this product can be found below, along with publications, customer reviews and Q&As</p>

Properties

Form	Liquid
Storage instructions	Shipped at 4°C. Upon delivery aliquot and store at -20°C or -80°C. Avoid repeated freeze / thaw cycles.
Storage buffer	pH: 7.4 Constituent: 2.68% PBS
Purity	Protein G purified
Clonality	Polyclonal
Isotype	IgG

Applications

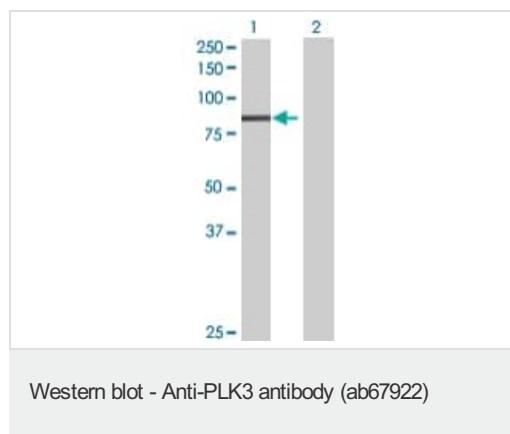
The Abpromise guarantee Our [Abpromise guarantee](#) covers the use of ab67922 in the following tested applications. The application notes include recommended starting dilutions; optimal dilutions/concentrations should be determined by the end user.

Application	Abreviews	Notes
WB	★★★★★ (1)	1/500 - 1/1000. Predicted molecular weight: 72 kDa. This antibody has been tested on the recombinant fragment only and we cannot guarantee that it will work on the endogenous protein

Target

Function	Serine/threonine protein kinase involved in regulating M phase functions during the cell cycle. May also be part of the signaling network controlling cellular adhesion. In vitro, is able to phosphorylate CDC25C and casein.
Tissue specificity	Transcripts are highly detected in placenta, lung, followed by skeletal muscle, heart, pancreas, ovaries and kidney and weakly detected in liver and brain. May have a short half-live. In cells of hematopoietic origin, strongly and exclusively detected in terminally differentiated macrophages. Transcript expression appears to be down-regulated in primary lung tumor.
Sequence similarities	Belongs to the protein kinase superfamily. Ser/Thr protein kinase family. CDC5/Polo subfamily. Contains 2 POLO box domains. Contains 1 protein kinase domain.
Post-translational modifications	Phosphorylated as cells enter mitosis and dephosphorylated as cells exit mitosis.
Cellular localization	Membrane.

Images



All lanes : Anti-PLK3 antibody (ab67922) at 1/500 dilution

Lane 1 : PLK3 transfected 293T cell lysate

Lane 2 : Non-transfected 293T cell lysate

Lysates/proteins at 25 µg per lane.

Secondary

All lanes : Goat anti-mouse IgG (H&L)-HRP at 1/2000 dilution

Predicted band size: 72 kDa

Observed band size: 80 kDa

Please note: All products are "FOR RESEARCH USE ONLY. NOT FOR USE IN DIAGNOSTIC PROCEDURES"

Our Promise to you: Quality guaranteed and expert technical support

- Replacement or refund for products not performing as stated on the datasheet

- Valid for 12 months from date of delivery
- Response to your inquiry within 24 hours

- We provide support in Chinese, English, French, German, Japanese and Spanish
- Extensive multi-media technical resources to help you
- We investigate all quality concerns to ensure our products perform to the highest standards

If the product does not perform as described on this datasheet, we will offer a refund or replacement. For full details of the Abpromise, please visit <https://www.abcam.com/abpromise> or contact our technical team.

Terms and conditions

- Guarantee only valid for products bought direct from Abcam or one of our authorized distributors