

Product datasheet

Anti-Plunc antibody [EPR8381] ab131163

Recombinant RabMAb

4 Images

Overview

Product name	Anti-Plunc antibody [EPR8381]
Description	Rabbit monoclonal [EPR8381] to Plunc
Host species	Rabbit
Tested applications	Suitable for: WB, Flow Cyt Unsuitable for: ICC or IHC-P
Species reactivity	Reacts with: Mouse, Rat, Human
Immunogen	Synthetic peptide within Human Plunc aa 150-250. The exact sequence is proprietary.
Positive control	A549, PC3, Jurkat, 293T, Human lung squamous cell cancer and Human fetal lung lysates; Jurkat cells.
General notes	

This product is a recombinant monoclonal antibody, which offers several advantages including:

- High batch-to-batch consistency and reproducibility
- Improved sensitivity and specificity
- Long-term security of supply
- Animal-free production

For more information [see here](#).

Our RabMAb[®] technology is a patented hybridoma-based technology for making rabbit monoclonal antibodies. For details on our patents, please refer to [RabMAb[®] patents](#).

Reproducibility is key to advancing scientific discovery and accelerating scientists' next breakthrough.

Abcam is leading the way with our range of recombinant antibodies, knockout-validated antibodies and knockout cell lines, all of which support improved reproducibility.

We are also planning to innovate the way in which we present recommended applications and species on our product datasheets, so that only applications & species that have been tested in our own labs, our suppliers or by selected trusted collaborators are covered by our Abpromise[™] guarantee.

In preparation for this, we have started to update the applications & species that this product is Abpromise guaranteed for.

We are also updating the applications & species that this product has been "predicted to work

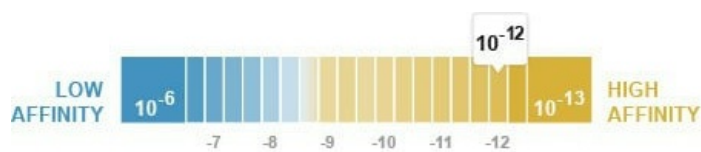
with," however this information is not covered by our Abpromise guarantee.

Applications & species from publications and Abreviews that have not been tested in our own labs or in those of our suppliers are not covered by the Abpromise guarantee.

Please check that this product meets your needs before purchasing. If you have any questions, special requirements or concerns, please send us an inquiry and/or contact our Support team ahead of purchase. Recommended alternatives for this product can be found below, as well as customer reviews and Q&As.

Properties

Form	Liquid
Storage instructions	Shipped at 4°C. Store at -20°C. Stable for 12 months at -20°C.
Dissociation constant (K_D)	K _D = 3.90 x 10 ⁻¹² M



[Learn more about K_D](#)

Storage buffer	pH: 7.20 Preservative: 0.01% Sodium azide Constituents: 9% PBS, 40% Glycerol (glycerin, glycerine), 0.05% BSA, 50% Tissue culture supernatant
Purity	Tissue culture supernatant
Clonality	Monoclonal
Clone number	EPR8381
Isotype	IgG

Applications

Our [Abpromise guarantee](#) covers the use of **ab131163** in the following tested applications.

The application notes include recommended starting dilutions; optimal dilutions/concentrations should be determined by the end user.

Application	Abreviews	Notes
WB		1/1000 - 1/10000. Detects a band of approximately 25 kDa (predicted molecular weight: 27 kDa).
Flow Cyt		1/10 - 1/100. ab172730 - Rabbit monoclonal IgG, is suitable for use as an isotype control with this antibody.

Application notes	Is unsuitable for ICC or IHC-P.
--------------------------	---------------------------------

Target

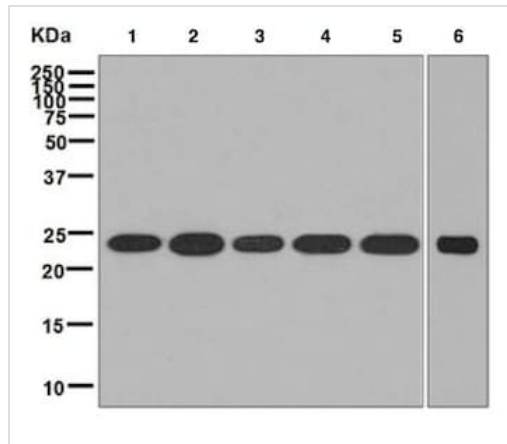
Relevance	May be involved in the airway inflammatory response after exposure to irritants. May be
------------------	---

associated with tumor progression. May play a role in innate immune responses of the upper airways.

Cellular localization

Secreted. Note: Found in the nasal mucus. Apical side of airway epithelial cells. Detected in nasal mucus

Images



Western blot - Anti-Plunc antibody [EPR8381] (ab131163)

All lanes : Anti-Plunc antibody [EPR8381] (ab131163) at 1/1000 dilution

Lane 1 : A549 cell lysate

Lane 2 : PC3 cell lysate

Lane 3 : Human lung squamous cell cancer lysate

Lane 4 : Human fetal lung lysate

Lane 5 : Jurkat cell lysate

Lane 6 : 293T cell lysate

Lysates/proteins at 10 µg per lane.

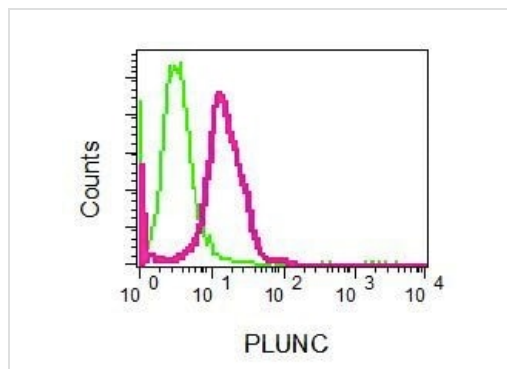
Secondary

All lanes : HRP labelled goat anti-rabbit IgG at 1/2000 dilution

Predicted band size: 27 kDa

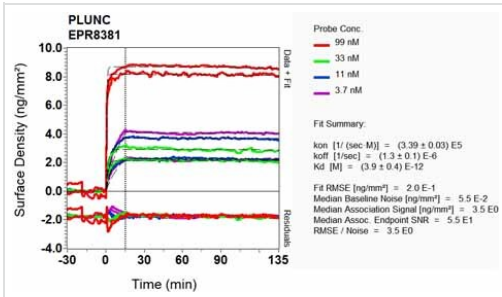
Observed band size: 25 kDa

[why is the actual band size different from the predicted?](#)



Flow Cytometry - Anti-Plunc antibody [EPR8381] (ab131163)

Flow cytometric analysis of Jurkat cells labelling Plunc (red) or a rabbit IgG negative control (green) with ab131163 antibody at 1/10 dilution.



SPR Scanning - Anti-Plunc antibody [EPR8381]
(ab131163)

Equilibrium dissociation constant (K_D)

Learn more about K_D

[Click here to learn more about \$K_D\$](#)

Why choose a recombinant antibody?

Research with confidence
Consistent and reproducible results

Long-term and scalable supply
Recombinant technology

Success from the first experiment
Confirmed specificity

Ethical standards compliant
Animal-free production

Anti-Plunc antibody [EPR8381] (ab131163)

Please note: All products are "FOR RESEARCH USE ONLY. NOT FOR USE IN DIAGNOSTIC PROCEDURES"

Our Abpromise to you: Quality guaranteed and expert technical support

- Replacement or refund for products not performing as stated on the datasheet
- Valid for 12 months from date of delivery
- Response to your inquiry within 24 hours
- We provide support in Chinese, English, French, German, Japanese and Spanish
- Extensive multi-media technical resources to help you
- We investigate all quality concerns to ensure our products perform to the highest standards

If the product does not perform as described on this datasheet, we will offer a refund or replacement. For full details of the Abpromise, please visit <https://www.abcam.com/abpromise> or contact our technical team.

Terms and conditions

- Guarantee only valid for products bought direct from Abcam or one of our authorized distributors