




Product datasheet

Anti-PLXNA3 antibody ab191214

2 Images

Overview

<b>Product name</b>	Anti-PLXNA3 antibody
<b>Description</b>	Rabbit polyclonal to PLXNA3
<b>Host species</b>	Rabbit
<b>Tested applications</b>	<b>Suitable for:</b> IP, WB
<b>Species reactivity</b>	<b>Reacts with:</b> Human <b>Predicted to work with:</b> Rabbit, Chimpanzee, Gorilla, Orangutan 
<b>Immunogen</b>	Synthetic peptide within Human PLXNA3 aa 1050-1100. The exact sequence is proprietary. Sequence: T VQEPRVRAKY RGIETTNTCQ VINDTAMLCK APGIFLGRPQ PRAQGEHPDE  Database link: <a href="#">P51805</a>   <a href="#">Run BLAST with</a>  <a href="#">Run BLAST with</a>
<b>Positive control</b>	HeLa and 293T whole cell lysates
<b>General notes</b>	Previously labelled as Plexin A3.

Properties

<b>Form</b>	Liquid
<b>Storage instructions</b>	Shipped at 4°C. Store at +4°C short term (1-2 weeks). Upon delivery aliquot. Store at -20°C long term. Avoid freeze / thaw cycle.
<b>Storage buffer</b>	Preservative: 0.09% Sodium azide Constituent: 99% Tris citrate/phosphate  pH: 7 to 8
<b>Purity</b>	Immunogen affinity purified
<b>Purification notes</b>	ab191214 was affinity purified using an epitope specific to PLXNA3 immobilized on solid support.
<b>Clonality</b>	Polyclonal
<b>Isotype</b>	IgG

## Applications

Our [Abpromise guarantee](#) covers the use of **ab191214** in the following tested applications.

The application notes include recommended starting dilutions; optimal dilutions/concentrations should be determined by the end user.

Application	Abreviews	Notes
IP		Use at 2-10 µg/mg of lysate.
WB		1/2000 - 1/10000. Predicted molecular weight: 207 kDa.

## Target

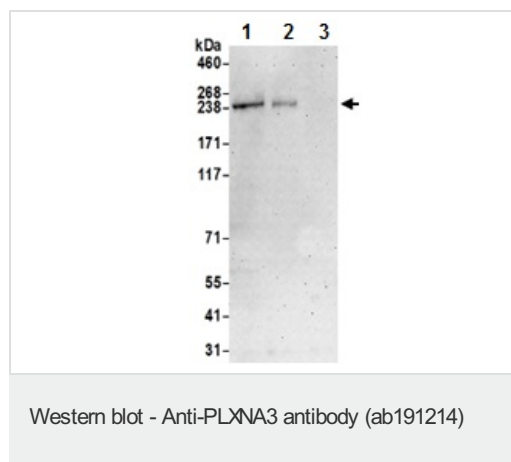
### Relevance

Plexin A3 is a coreceptor for the class 3 secreted semaphorins. This family of semaphorins binds to a complex composed of a neuropilin and a plexin. The plexin type modulates the affinity of the complex for specific semaphorins and its cytoplasmic domain is required for the activation of down-stream signaling events in the cytoplasm. Plexin A3 is a putative receptor involved in the development of neural and epithelial tissues.

### Cellular localization

Membrane; single-pass type I membrane protein.

## Images



**All lanes :** Anti-PLXNA3 antibody (ab191214) at 0.1 µg/ml

**Lane 1 :** HeLa cell lysate in RIPA buffer

**Lane 2 :** 293T cell lysate in RIPA buffer

**Lane 3 :** Jurkat cell lysate in RIPA buffer

Lysates/proteins at 50 µg per lane.

Developed using the ECL technique.

**Predicted band size:** 207 kDa

**Exposure time:** 3 minutes



Immunoprecipitation - Anti-PLXNA3 antibody  
(ab191214)

Immunoprecipitation analysis of HeLa cell lysate (in RIPA buffer, 1.0 mg per IP reaction; 20% of IP loaded) labeling PLXNA3 using ab191214 at 6  $\mu$ g per reaction. For blotting immunoprecipitated PLXNA3, ab191214 was used at 1  $\mu$ g/ml. Detection: Chemiluminescence with an exposure time of 3 minutes.

**Please note:** All products are "FOR RESEARCH USE ONLY. NOT FOR USE IN DIAGNOSTIC PROCEDURES"

### Our Abpromise to you: Quality guaranteed and expert technical support

---

- Replacement or refund for products not performing as stated on the datasheet
- Valid for 12 months from date of delivery
- Response to your inquiry within 24 hours
- We provide support in Chinese, English, French, German, Japanese and Spanish
- Extensive multi-media technical resources to help you
- We investigate all quality concerns to ensure our products perform to the highest standards

If the product does not perform as described on this datasheet, we will offer a refund or replacement. For full details of the Abpromise, please visit <https://www.abcam.com/abpromise> or contact our technical team.

### Terms and conditions

---

- Guarantee only valid for products bought direct from Abcam or one of our authorized distributors