

Product datasheet

Anti-PMM1 antibody [EPR17844] ab202058

Recombinant RabMAb

8 Images

Overview

Product name	Anti-PMM1 antibody [EPR17844]
Description	Rabbit monoclonal [EPR17844] to PMM1
Host species	Rabbit
Tested applications	Suitable for: IHC-P, WB
Species reactivity	Reacts with: Mouse, Rat, Human
Immunogen	Recombinant fragment within Human PMM1 aa 50 to the C-terminus. The exact sequence is proprietary. Database link: Q92871
Positive control	WB: Human fetal liver, fetal brain, fetal heart and fetal kidney lysates; HepG2, 293, C6, NIH/3T3 and PC-12 whole cell lysates; Mouse brain and rat brain lysates. IHC-P: Human liver, mouse cerebral cortex and rat pancreas tissues.

General notes

This product is a recombinant monoclonal antibody, which offers several advantages including:

- High batch-to-batch consistency and reproducibility
- Improved sensitivity and specificity
- Long-term security of supply
- Animal-free production

For more information [see here](#).

Our RabMAb[®] technology is a patented hybridoma-based technology for making rabbit monoclonal antibodies. For details on our patents, please refer to [RabMAb[®] patents](#).

Reproducibility is key to advancing scientific discovery and accelerating scientists' next breakthrough.

Abcam is leading the way with our range of recombinant antibodies, knockout-validated antibodies and knockout cell lines, all of which support improved reproducibility.

We are also planning to innovate the way in which we present recommended applications and species on our product datasheets, so that only applications & species that have been tested in our own labs, our suppliers or by selected trusted collaborators are covered by our Abpromise[™] guarantee.

In preparation for this, we have started to update the applications & species that this product is

Abpromise guaranteed for.

We are also updating the applications & species that this product has been “predicted to work with,” however this information is not covered by our Abpromise guarantee.

Applications & species from publications and Abreviews that have not been tested in our own labs or in those of our suppliers are not covered by the Abpromise guarantee.

Please check that this product meets your needs before purchasing. If you have any questions, special requirements or concerns, please send us an inquiry and/or contact our Support team ahead of purchase. Recommended alternatives for this product can be found below, as well as customer reviews and Q&As.

Properties

Form	Liquid
Storage instructions	Shipped at 4°C. Store at +4°C short term (1-2 weeks). Upon delivery aliquot. Store at -20°C long term. Avoid freeze / thaw cycle.
Storage buffer	pH: 7.2 Preservative: 0.01% Sodium azide Constituents: 59% PBS, 40% Glycerol (glycerin, glycerine), 0.05% BSA
Purity	Protein A purified
Clonality	Monoclonal
Clone number	EPR17844
Isotype	IgG

Applications

Our [Abpromise guarantee](#) covers the use of **ab202058** in the following tested applications.

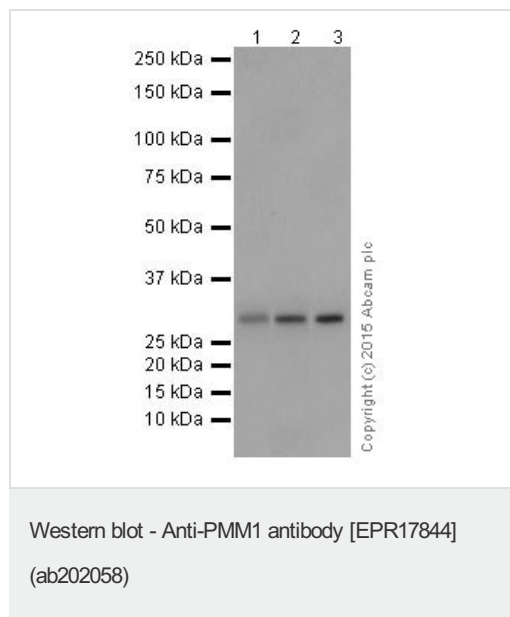
The application notes include recommended starting dilutions; optimal dilutions/concentrations should be determined by the end user.

Application	Abreviews	Notes
IHC-P		1/100. Perform heat mediated antigen retrieval with Tris/EDTA buffer pH 9.0 before commencing with IHC staining protocol.
WB		1/2000. Detects a band of approximately 30 kDa (predicted molecular weight: 30 kDa).

Target

Function	Involved in the synthesis of the GDP-mannose and dolichol-phosphate-mannose required for a number of critical mannosyl transfer reactions. In addition, may be responsible for the degradation of glucose-1,6-bisphosphate in ischemic brain.
Tissue specificity	Strong expression in liver, heart, brain, and pancreas; lower expression in skeletal muscle.
Pathway	Nucleotide-sugar biosynthesis; GDP-alpha-D-mannose biosynthesis; alpha-D-mannose 1-phosphate from D-fructose 6-phosphate: step 2/2.
Sequence similarities	Belongs to the eukaryotic PMM family.

Images



All lanes : Anti-PMM1 antibody [EPR17844] (ab202058) at 1/5000 dilution

Lane 1 : Human fetal liver lysate

Lane 2 : HepG2 (Human liver hepatocellular carcinoma) whole cell lysate

Lane 3 : 293 (Human epithelial cells from embryonic kidney) whole cell lysate

Lysates/proteins at 10 µg per lane.

Secondary

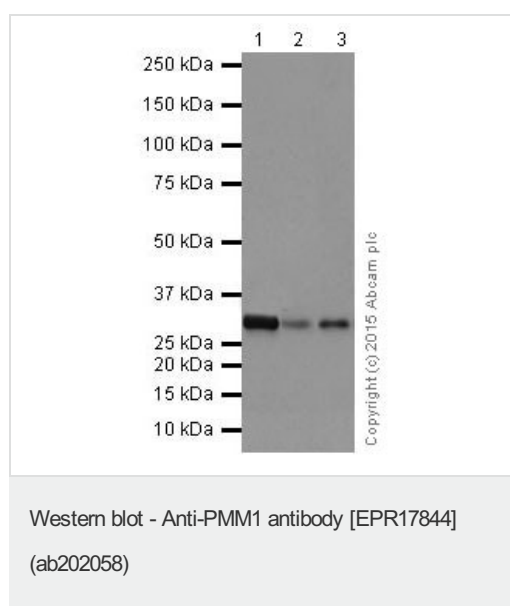
All lanes : Anti-Rabbit IgG (HRP), specific to the non-reduced form of IgG at 1/1000 dilution

Predicted band size: 30 kDa

Observed band size: 30 kDa

Exposure time: 1 minute

Blocking/Dilution buffer: 5% NFD/MBST.



All lanes : Anti-PMM1 antibody [EPR17844] (ab202058) at 1/2000 dilution

Lane 1 : Human fetal brain lysate

Lane 2 : Human fetal heart lysate

Lane 3 : Human fetal kidney lysate

Lysates/proteins at 10 µg per lane.

Secondary

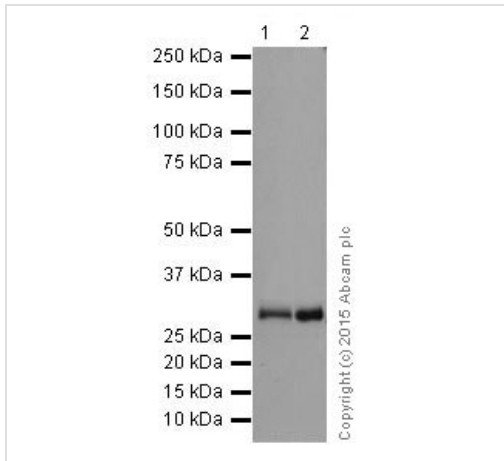
All lanes : Anti-Rabbit IgG (HRP), specific to the non-reduced form of IgG at 1/1000 dilution

Predicted band size: 30 kDa

Observed band size: 30 kDa

Exposure time: 3 minutes

Blocking/Dilution buffer: 5% NFDm/TBST.



Western blot - Anti-PMM1 antibody [EPR17844]
(ab202058)

All lanes : Anti-PMM1 antibody [EPR17844] (ab202058) at 1/2000 dilution

Lane 1 : Mouse brain lysate

Lane 2 : Rat brain lysate

Lysates/proteins at 10 µg per lane.

Secondary

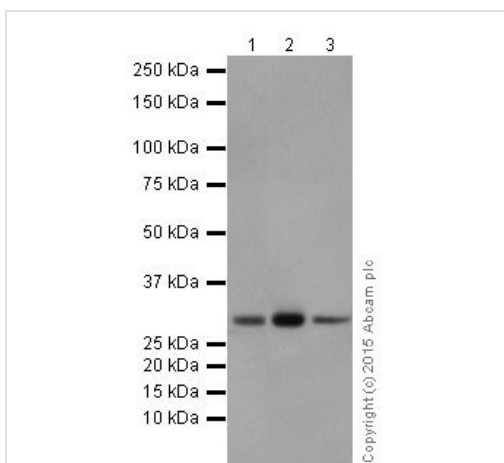
All lanes : Goat Anti-Rabbit IgG, (H+L), Peroxidase conjugated at 1/1000 dilution

Predicted band size: 30 kDa

Observed band size: 30 kDa

Exposure time: 30 seconds

Blocking/Dilution buffer: 5% NFDm/TBST.



Western blot - Anti-PMM1 antibody [EPR17844]
(ab202058)

All lanes : Anti-PMM1 antibody [EPR17844] (ab202058) at 1/5000 dilution

Lane 1 : C6 (Rat glial tumor cells) whole cell lysate

Lane 2 : PC-12 (Rat adrenal gland pheochromocytoma) whole cell lysate

Lane 3 : NIH/3T3 (Mouse embryo fibroblast cells) whole cell lysate

Lysates/proteins at 10 µg per lane.

Secondary

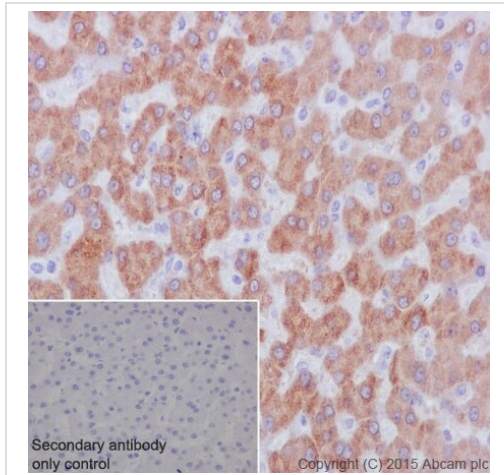
All lanes : Goat Anti-Rabbit IgG, (H+L), Peroxidase conjugated at 1/1000 dilution

Predicted band size: 30 kDa

Observed band size: 30 kDa

Exposure time: 30 seconds

Blocking/Dilution buffer: 5% NFDm/TBST.

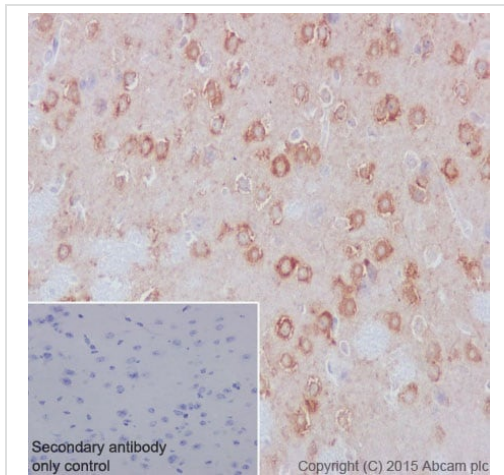


Immunohistochemical analysis of paraffin-embedded Human liver tissue labeling PMM1 with ab202058 at 1/100 dilution, followed by Goat Anti-Rabbit IgG H&L (HRP) (ab97051) secondary antibody at 1/500 dilution. Cytoplasmic staining on Human liver tissue is observed. Counter stained with Hematoxylin.

Secondary antibody only control: Used PBS instead of primary antibody, secondary antibody is Goat Anti-Rabbit IgG H&L (HRP) (ab97051) at 1/500 dilution.

Perform heat mediated antigen retrieval with Tris/EDTA buffer pH 9.0 before commencing with IHC staining protocol.

Immunohistochemistry (Formalin/PFA-fixed paraffin-embedded sections) - Anti-PMM1 antibody [EPR17844] (ab202058)

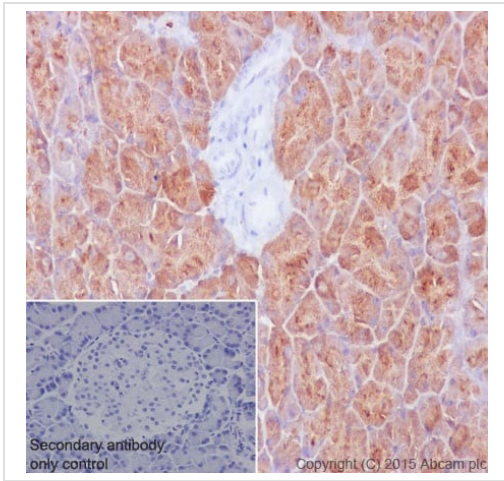


Immunohistochemical analysis of paraffin-embedded Mouse cerebral cortex tissue labeling PMM1 with ab202058 at 1/100 dilution, followed by Goat Anti-Rabbit IgG H&L (HRP) (ab97051) secondary antibody at 1/500 dilution. Cytoplasmic staining on mouse cerebral cortex is observed. Counter stained with Hematoxylin.

Secondary antibody only control: Used PBS instead of primary antibody, secondary antibody is Goat Anti-Rabbit IgG H&L (HRP) (ab97051) at 1/500 dilution.

Perform heat mediated antigen retrieval with Tris/EDTA buffer pH 9.0 before commencing with IHC staining protocol.

Immunohistochemistry (Formalin/PFA-fixed paraffin-embedded sections) - Anti-PMM1 antibody [EPR17844] (ab202058)





Immunohistochemical analysis of paraffin-embedded rat pancreas tissue labeling PMM1 with ab202058 at 1/100 dilution, followed by Goat Anti-Rabbit IgG H&L (HRP) (ab97051) secondary antibody at 1/500 dilution. Cytoplasmic staining on rat pancreas is observed. Counter stained with Hematoxylin.

Secondary antibody only control: Used PBS instead of primary antibody, secondary antibody is Goat Anti-Rabbit IgG H&L (HRP) (ab97051) at 1/500 dilution.

Perform heat mediated antigen retrieval with Tris/EDTA buffer pH 9.0 before commencing with IHC staining protocol.

Immunohistochemistry (Formalin/PFA-fixed paraffin-embedded sections) - Anti-PMM1 antibody [EPR17844] (ab202058)

Why choose a recombinant antibody?

 <p>Research with confidence Consistent and reproducible results</p>	 <p>Long-term and scalable supply Recombinant technology</p>
 <p>Success from the first experiment Confirmed specificity</p>	 <p>Ethical standards compliant Animal-free production</p>

Anti-PMM1 antibody [EPR17844] (ab202058)

Please note: All products are "FOR RESEARCH USE ONLY. NOT FOR USE IN DIAGNOSTIC PROCEDURES"

Our Abpromise to you: Quality guaranteed and expert technical support

- Replacement or refund for products not performing as stated on the datasheet
- Valid for 12 months from date of delivery
- Response to your inquiry within 24 hours
- We provide support in Chinese, English, French, German, Japanese and Spanish

- Extensive multi-media technical resources to help you
- We investigate all quality concerns to ensure our products perform to the highest standards

If the product does not perform as described on this datasheet, we will offer a refund or replacement. For full details of the Abpromise, please visit <https://www.abcam.com/abpromise> or contact our technical team.

Terms and conditions

- Guarantee only valid for products bought direct from Abcam or one of our authorized distributors