

Product datasheet

Anti-PMS2CL antibody ab176128

1 Image

Overview

Product name	Anti-PMS2CL antibody
Description	Rabbit polyclonal to PMS2CL
Host species	Rabbit
Tested applications	Suitable for: IHC-P
Species reactivity	Reacts with: Human
Immunogen	Synthetic peptide within Human PMS2CL (internal sequence). The exact sequence is proprietary. Database link: Q68D20
Positive control	Human breast carcinoma tissue.

Properties

Form	Liquid
Storage instructions	Shipped at 4°C. Store at +4°C short term (1-2 weeks). Upon delivery aliquot. Store at -20°C long term. Avoid freeze / thaw cycle.
Storage buffer	pH: 7.40 Preservative: 0.02% Sodium azide Constituents: 0.88% Sodium chloride, 49% PBS Glycerol 50%
Purity	Immunogen affinity purified
Clonality	Polyclonal
Isotype	IgG

Applications

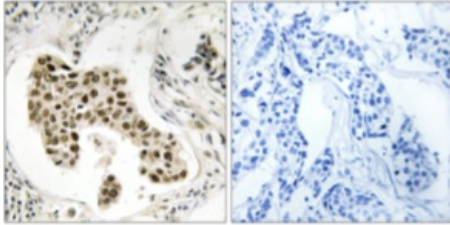
Our [Abpromise guarantee](#) covers the use of **ab176128** in the following tested applications.

The application notes include recommended starting dilutions; optimal dilutions/concentrations should be determined by the end user.

Application	Abreviews	Notes
IHC-P		1/50 - 1/100.

Target

Images



Immunohistochemistry analysis of paraffin-embedded Human breast carcinoma tissue labeling PMS2CL using ab176128 at a 1/50 dilution, in the absence (left image) and presence (right image) of the blocking peptide.

Immunohistochemistry (Formalin/PFA-fixed paraffin-embedded sections) - Anti-PMS2CL antibody (ab176128)

Please note: All products are "FOR RESEARCH USE ONLY AND ARE NOT INTENDED FOR DIAGNOSTIC OR THERAPEUTIC USE"

Our Abpromise to you: Quality guaranteed and expert technical support

- Replacement or refund for products not performing as stated on the datasheet
- Valid for 12 months from date of delivery
- Response to your inquiry within 24 hours
- We provide support in Chinese, English, French, German, Japanese and Spanish
- Extensive multi-media technical resources to help you
- We investigate all quality concerns to ensure our products perform to the highest standards

If the product does not perform as described on this datasheet, we will offer a refund or replacement. For full details of the Abpromise, please visit <https://www.abcam.com/abpromise> or contact our technical team.

Terms and conditions

- Guarantee only valid for products bought direct from Abcam or one of our authorized distributors