

Product datasheet

Anti-PNLDC1 antibody - Carboxyterminal end  
ab170282

3 Images

Overview

<b>Product name</b>	Anti-PNLDC1 antibody - Carboxyterminal end
<b>Description</b>	Rabbit polyclonal to PNLDC1 - Carboxyterminal end
<b>Host species</b>	Rabbit
<b>Tested applications</b>	<b>Suitable for:</b> Flow Cyt, IHC-P, WB
<b>Species reactivity</b>	<b>Reacts with:</b> Human
<b>Immunogen</b>	Synthetic peptide within Human PNLDC1 aa 456-486 (C terminal) conjugated to Keyhole Limpet Haemocyanin (KLH). The exact sequence is proprietary. Database link: <a href="#">Q8NA58</a>
<b>Positive control</b>	Human testis tissue; Ramos cells.

Properties

<b>Form</b>	Liquid
<b>Storage instructions</b>	Shipped at 4°C. Store at +4°C short term (1-2 weeks). Upon delivery aliquot. Store at -20°C long term. Avoid freeze / thaw cycle.
<b>Storage buffer</b>	Preservative: 0.09% Sodium azide Constituent: 99% PBS
<b>Purity</b>	Immunogen affinity purified
<b>Clonality</b>	Polyclonal
<b>Isotype</b>	IgG

Applications

Our [Abpromise guarantee](#) covers the use of **ab170282** in the following tested applications.

The application notes include recommended starting dilutions; optimal dilutions/concentrations should be determined by the end user.

Application	Abreviews	Notes
-------------	-----------	-------

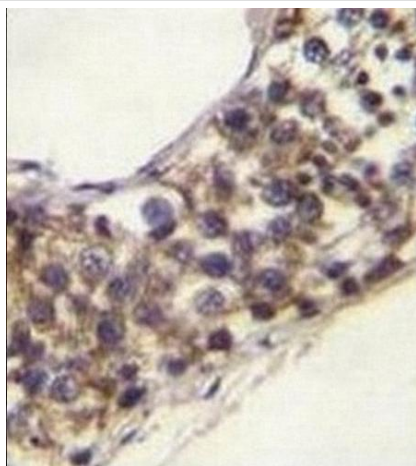
Application	Abreviews	Notes
Flow Cyt		1/10 - 1/50. <a href="#">ab171870</a> - Rabbit polyclonal IgG, is suitable for use as an isotype control with this antibody.
IHC-P		1/10 - 1/50. Perform heat mediated antigen retrieval with citrate buffer pH 6 before commencing with IHC staining protocol.
WB		1/100 - 1/500. Predicted molecular weight: 60 kDa.

## Target

**Sequence similarities** Belongs to the CAF1 family.

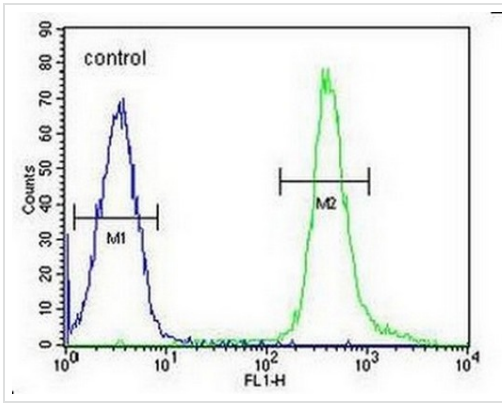
**Cellular localization** Membrane.

## Images



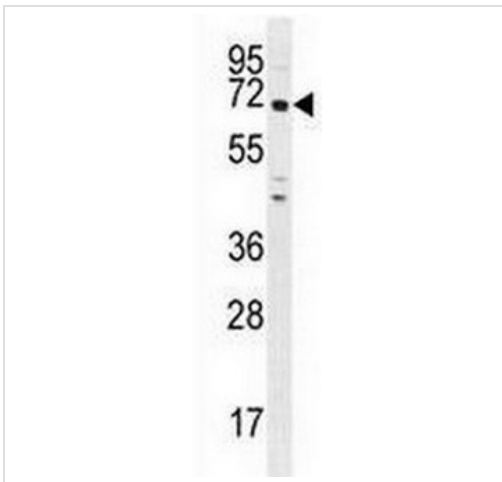
Immunohistochemical analysis of formalin fixed, paraffin embedded Human testis tissue labeling PNLDC1 with ab170282 at 1/10.

Immunohistochemistry (Formalin/PFA-fixed paraffin-embedded sections) - Anti-PNLDC1 antibody - Carboxyterminal end (ab170282)



Flow Cytometry - Anti-PNLDC1 antibody -  
Carboxyterminal end (ab170282)

Flow cytometric analysis of Ramos cells labeling PNLDC1 (right histogram) compared to a negative control cell (left histogram) with ab170282 at 1/10 dilution.



Western blot - Anti-PNLDC1 antibody -  
Carboxyterminal end (ab170282)

Anti-PNLDC1 antibody - Carboxyterminal end (ab170282) at 1/100 dilution + Ramos cell lysate at 35 µg

Developed using the ECL technique.

**Predicted band size: 60 kDa**

**Please note:** All products are "FOR RESEARCH USE ONLY AND ARE NOT INTENDED FOR DIAGNOSTIC OR THERAPEUTIC USE"

### Our Abpromise to you: Quality guaranteed and expert technical support

- Replacement or refund for products not performing as stated on the datasheet
- Valid for 12 months from date of delivery
- Response to your inquiry within 24 hours
- We provide support in Chinese, English, French, German, Japanese and Spanish
- Extensive multi-media technical resources to help you
- We investigate all quality concerns to ensure our products perform to the highest standards

If the product does not perform as described on this datasheet, we will offer a refund or replacement. For full details of the Abpromise, please visit <https://www.abcam.com/abpromise> or contact our technical team.

### Terms and conditions

- Guarantee only valid for products bought direct from Abcam or one of our authorized distributors