


Product datasheet

Anti-PNUTS antibody ab70248

2 Images

Overview

| | |
|----------------------------|--|
| Product name | Anti-PNUTS antibody |
| Description | Rabbit polyclonal to PNUTS |
| Host species | Rabbit |
| Tested applications | Suitable for: WB, IP |
| Species reactivity | Reacts with: Human Predicted to work with: Mouse, Rat, Horse, Guinea pig, Cow, Dog, Pig, Xenopus laevis, Chimpanzee, Zebrafish, Rhesus monkey, Gorilla, Tilapia, Orangutan, Medaka fish  |
| Immunogen | Other Immunogen Type corresponding to PNUTS (C terminal). A region between residue 900 and the C-terminus (residue 940) of human PNUTS. |
| Positive control | Nuclear extract of Hela cells |
| General notes | This product was previously labelled as PPP1R10 |

Reproducibility is key to advancing scientific discovery and accelerating scientists' next breakthrough.

Abcam is leading the way with our range of recombinant antibodies, knockout-validated antibodies and knockout cell lines, all of which support improved reproducibility.

We are also planning to innovate the way in which we present recommended applications and species on our product datasheets, so that only applications & species that have been tested in our own labs, our suppliers or by selected trusted collaborators are covered by our Abpromise™ guarantee.

In preparation for this, we have started to update the applications & species that this product is Abpromise guaranteed for.

We are also updating the applications & species that this product has been “predicted to work with,” however this information is not covered by our Abpromise guarantee.

Applications & species from publications and Abreviews that have not been tested in our own labs or in those of our suppliers are not covered by the Abpromise guarantee.

Please check that this product meets your needs before purchasing. If you have any questions, special requirements or concerns, please send us an inquiry and/or contact our Support team ahead of purchase. Recommended alternatives for this product can be found below, as well as customer reviews and Q&As.

Properties

| | |
|-----------------------------|---|
| Form | Liquid |
| Storage instructions | Shipped at 4°C. Upon delivery aliquot and store at -20°C. Avoid freeze / thaw cycles. |
| Storage buffer | pH: 7 Preservative: 0.09% Sodium azide Constituents: 1.815% Tris, 1.764% Sodium citrate, 0.021% PBS |
| Purity | Immunogen affinity purified |
| Purification notes | Antibody was affinity purified using an epitope specific to PNUTS immobilized on solid support. |
| Clonality | Polyclonal |
| Isotype | IgG |

Applications

Our [Abpromise guarantee](#) covers the use of **ab70248** in the following tested applications.

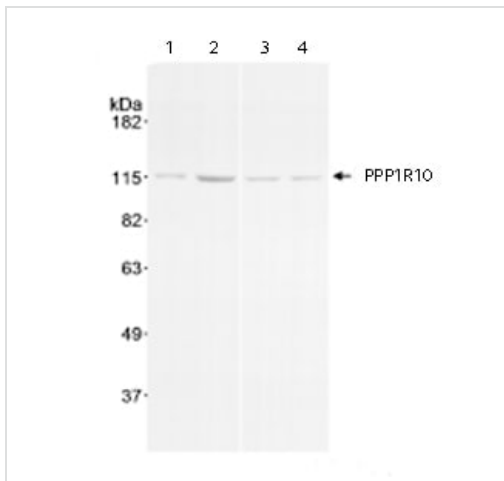
The application notes include recommended starting dilutions; optimal dilutions/concentrations should be determined by the end user.

| Application | Abreviews | Notes |
|-------------|-----------|--|
| WB | | 1/1000 - 1/5000. Detects a band of approximately 115 kDa (predicted molecular weight: 99 kDa). |
| IP | | Use at 1-10 µg/mg of lysate. |

Target

| | |
|---|---|
| Function | Scaffold protein which mediates the formation of the PTW/PP1 phosphatase complex by providing a binding platform to each component of the complex. The PTW/PP1 phosphatase complex plays a role in the control of chromatin structure and cell cycle progression during the transition from mitosis into interphase. Mediates interaction of WDR82 and PPP1CA. Inhibitor of PPP1CA and PPP1CC phosphatase activities. Has inhibitory activity on PPP1CA only when phosphorylated. Binds to mRNA, single-stranded DNA (ssDNA), poly(A) and poly(G) homopolymers. |
| Tissue specificity | Expressed in heart, brain, placenta, lung, liver, skeletal muscle, kidney and pancreas. |
| Sequence similarities | Contains 1 C3H1-type zinc finger. Contains 1 TFIS N-terminal domain. |
| Post-translational modifications | Phosphorylated on Ser-398 by PKA within the region necessary for interaction with PPP1CA. |
| Cellular localization | Nucleus. Found in discrete nucleoplasmic bodies and within nucleoli. Associates with chromatin during interphase, excluded from condensed chromosomes during early mitosis and is reloaded onto chromosomes at the late telophase (By similarity). |

Images



Western blot - Anti-PNUTS antibody (ab70248)

Lanes 1-2 : Anti-PNUTS antibody (ab70248) at 1 µg/ml

Lanes 3-4 : Anti-PNUTS antibody (ab70248) at 0.2 µg/ml

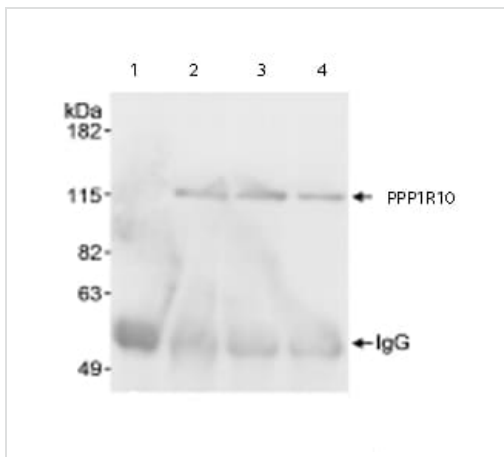
Lanes 1 & 3 : Nuclear extracts from HeLa cells at 15 µg

Lanes 2 & 4 : Nuclear extracts from HeLa cells at 45 µg

Predicted band size: 99 kDa

Observed band size: 115 kDa

[why is the actual band size different from the predicted?](#)



Immunoprecipitation - Anti-PNUTS antibody (ab70248)

Immunoprecipitation/ Western Blot of PNUTS Lane 1: Another antibody which recognizes a different epitope of PNUTS. Lane 2:

Another antibody which recognizes a different epitope of PNUTS. Lane 3: Another antibody which recognizes a different epitope of PNUTS. Lane 4: ab70248 at 1µg/100µg nuclear extract. Detection:

Chemiluminescence with exposure times of 3 seconds.

Please note: All products are "FOR RESEARCH USE ONLY. NOT FOR USE IN DIAGNOSTIC PROCEDURES"

Our Abpromise to you: Quality guaranteed and expert technical support

- Replacement or refund for products not performing as stated on the datasheet
- Valid for 12 months from date of delivery
- Response to your inquiry within 24 hours
- We provide support in Chinese, English, French, German, Japanese and Spanish
- Extensive multi-media technical resources to help you
- We investigate all quality concerns to ensure our products perform to the highest standards

If the product does not perform as described on this datasheet, we will offer a refund or replacement. For full details of the Abpromise, please visit <https://www.abcam.com/abpromise> or contact our technical team.

Terms and conditions

- Guarantee only valid for products bought direct from Abcam or one of our authorized distributors