


Product datasheet

Anti-Pofut1 antibody ab74302

★★★★★ 1 Abreviews 1 References 2 Images

Overview

Product name	Anti-Pofut1 antibody
Description	Rabbit polyclonal to Pofut1
Host species	Rabbit
Specificity	ab74302 detects endogenous levels of total Pofut1 protein.
Tested applications	Suitable for: WB, IHC-P
Species reactivity	Reacts with: Human Predicted to work with: Rat 
Immunogen	Synthetic peptide derived from an internal region of human Pofat1.
General notes	<p>The Life Science industry has been in the grips of a reproducibility crisis for a number of years. Abcam is leading the way in addressing this with our range of recombinant monoclonal antibodies and knockout edited cell lines for gold-standard validation. Please check that this product meets your needs before purchasing.</p> <p>If you have any questions, special requirements or concerns, please send us an inquiry and/or contact our Support team ahead of purchase. Recommended alternatives for this product can be found below, along with publications, customer reviews and Q&As</p>

Properties

Form	Liquid
Storage instructions	Shipped at 4°C. Upon delivery aliquot and store at -20°C. Avoid freeze / thaw cycles.
Storage buffer	pH: 7.40 Preservative: 0.02% Sodium azide Constituents: 50% Glycerol (glycerin, glycerine), 0.87% Sodium chloride, PBS Without Mg ²⁺ and Ca ²⁺
Purity	Immunogen affinity purified
Purification notes	The antibody was affinity purified from rabbit antiserum by affinity chromatography using epitope specific immunogen.
Clonality	Polyclonal
Isotype	IgG

Applications

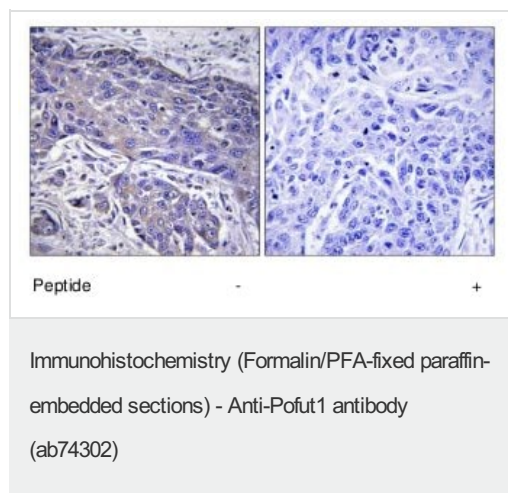
The Abpromise guarantee Our [Abpromise guarantee](#) covers the use of ab74302 in the following tested applications. The application notes include recommended starting dilutions; optimal dilutions/concentrations should be determined by the end user.

Application	Abreviews	Notes
WB		1/500 - 1/1000. Predicted molecular weight: 44 kDa.
IHC-P		1/50 - 1/100.

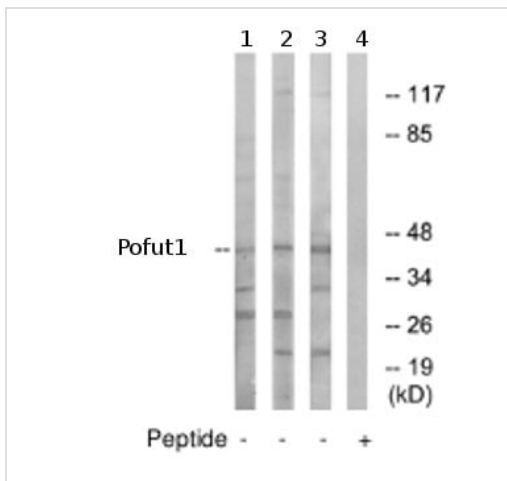
Target

Function	Catalyzes the reaction that attaches fucose through an O-glycosidic linkage to a conserved serine or threonine residue in EGF domains. Plays a crucial role in Notch signaling.
Tissue specificity	Highly expressed in heart, brain, placenta, lung, liver, skeletal muscle, kidney and pancreas.
Pathway	Protein modification; protein glycosylation.
Sequence similarities	Belongs to the glycosyltransferase 68 family.
Cellular localization	Endoplasmic reticulum.

Images



ab74302, at a 1/50 dilution, staining Pofut1 in paraffin embedded human lung carcinoma tissue in the absence (left image) and presence (right image) of the immunising peptide.



Western blot - Anti-Pofut1 antibody (ab74302)

All lanes : Anti-Pofut1 antibody (ab74302) at 1/500 dilution

Lane 1 : extracts from HeLa cells

Lane 2 : extracts from Jurkat cells

Lane 3 : extracts from HepG2 cells

Lane 4 : extracts from Jurkat cells with immunising peptide at 5 µg

Lysates/proteins at 5 µg per lane.

Predicted band size: 44 kDa

Observed band size: 44 kDa

Additional bands at: 117 kDa, 22 kDa, 28 kDa, 30 kDa. We are unsure as to the identity of these extra bands.

Please note: All products are "FOR RESEARCH USE ONLY. NOT FOR USE IN DIAGNOSTIC PROCEDURES"

Our Abpromise to you: Quality guaranteed and expert technical support

- Replacement or refund for products not performing as stated on the datasheet
- Valid for 12 months from date of delivery
- Response to your inquiry within 24 hours
- We provide support in Chinese, English, French, German, Japanese and Spanish
- Extensive multi-media technical resources to help you
- We investigate all quality concerns to ensure our products perform to the highest standards

If the product does not perform as described on this datasheet, we will offer a refund or replacement. For full details of the Abpromise, please visit <https://www.abcam.com/abpromise> or contact our technical team.

Terms and conditions

- Guarantee only valid for products bought direct from Abcam or one of our authorized distributors