




Product datasheet

# Anti-Pollen allergen Phl p 5b antibody ab225921

1 Image

Overview

---

<b>Product name</b>	Anti-Pollen allergen Phl p 5b antibody
<b>Description</b>	Rabbit polyclonal to Pollen allergen Phl p 5b
<b>Host species</b>	Rabbit
<b>Tested applications</b>	<b>Suitable for:</b> WB
<b>Species reactivity</b>	<b>Reacts with:</b> Recombinant fragment <b>Predicted to work with:</b> Timothy grass 
<b>Immunogen</b>	Recombinant full length protein corresponding to Timothy grass Pollen allergen Phl p 5b aa 1 to the C-terminus. Database link: <a href="#">Q40963</a>  <a href="#">Run BLAST with</a>  <a href="#">Run BLAST with</a>
<b>Positive control</b>	WB: Recombinant protein.
<b>General notes</b>	The Life Science industry has been in the grips of a reproducibility crisis for a number of years. Abcam is leading the way in addressing the problem with our range of recombinant monoclonal antibodies and knockout edited cell lines for gold-standard validation.  One factor contributing to the crisis is the use of antibodies that are not suitable. This can lead to misleading results and the use of incorrect data informing project assumptions and direction. To help address this challenge, we have introduced an application and species grid on our primary antibody datasheets to make it easy to simplify identification of the right antibody for your needs.  Learn more <a href="#">here</a> .

Properties

---

<b>Form</b>	Liquid
<b>Storage instructions</b>	Shipped at 4°C. Store at +4°C short term (1-2 weeks). Upon delivery aliquot. Store at -20°C long term. Avoid freeze / thaw cycle.
<b>Storage buffer</b>	pH: 7.40 Constituents: 50% Glycerol (glycerin, glycerine), PBS, 0.03% Proclin 300
<b>Purity</b>	Protein G purified
<b>Purification notes</b>	Purity >95%
<b>Clonality</b>	Polyclonal

## Applications

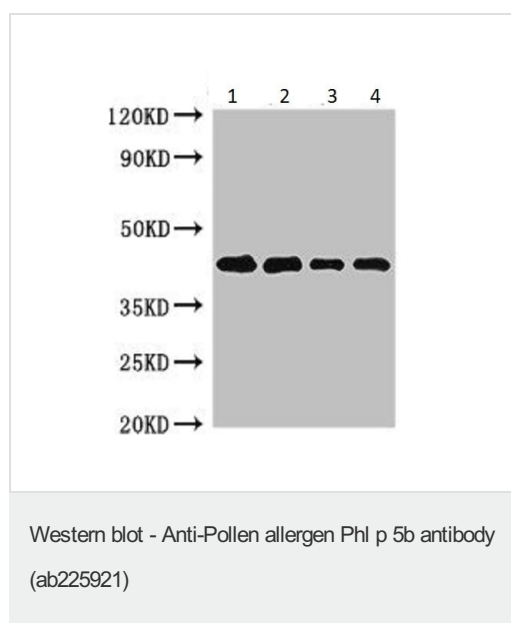
### The Abpromise guarantee

Our [Abpromise guarantee](#) covers the use of **ab225921** in the following tested applications.

The application notes include recommended starting dilutions; optimal dilutions/concentrations should be determined by the end user.

Application	Abreviews	Notes
WB		1/500 - 1/5000. Predicted molecular weight: 28 kDa.

## Images



**All lanes** : Anti-Pollen allergen Phl p 5b antibody (ab225921) at 1/500 dilution

**Lane 1** : Recombinant protein at 0.06 µg

**Lane 2** : Recombinant protein at 0.03 µg

**Lane 3** : Recombinant protein at 0.015 µg

**Lane 4** : Recombinant protein at 0.01 µg

### Secondary

**All lanes** : Goat polyclonal to rabbit IgG at 1/50000 dilution

**Predicted band size:** 28 kDa

**Observed band size:** 43 kDa

**Please note:** All products are "FOR RESEARCH USE ONLY. NOT FOR USE IN DIAGNOSTIC PROCEDURES"

## Our Abpromise to you: Quality guaranteed and expert technical support

- Replacement or refund for products not performing as stated on the datasheet
- Valid for 12 months from date of delivery
- Response to your inquiry within 24 hours
- We provide support in Chinese, English, French, German, Japanese and Spanish
- Extensive multi-media technical resources to help you
- We investigate all quality concerns to ensure our products perform to the highest standards

If the product does not perform as described on this datasheet, we will offer a refund or replacement. For full details of the Abpromise, please visit <https://www.abcam.com/abpromise> or contact our technical team.

## Terms and conditions

---

- Guarantee only valid for products bought direct from Abcam or one of our authorized distributors