




Product datasheet

Anti-POLR3GL antibody [OT12F11] ab180359

8 Images

Overview

Product name	Anti-POLR3GL antibody [OT12F11]
Description	Mouse monoclonal [OT12F11] to POLR3GL
Host species	Mouse
Tested applications	Suitable for: WB, IHC-P, ICC/IF
Species reactivity	Reacts with: Human Predicted to work with: Mouse, Cow 
Immunogen	Recombinant full length protein corresponding to Human POLR3GL aa 1-218. Produced in HEK-293T cells. (NP_115681.1). Sequence: <pre>MASRGGRGRGRGQLTFNVEAVGIGKGDALPPPTLQ PSPLFPPLEFRPVP LPSGEEGEYVLALKQELRGAMRQLPYFIRPAVPKRDV ERYSDKYQMSGPI DNAIDWNPDRRLPRELKIRVRKLQKERITILLPKRPPK TTEDKEETIQK LETLEKKEEEVTSEEDKEEEEEEEEEEEEEEEEEEEYDEEE HEEETDYIMSYFD NGEDFGGDSDDNMDEAIY</pre> Database link: Q9BT43 <div style="display: flex; justify-content: space-around;">  Run BLAST with  Run BLAST with </div>
Positive control	WB: HEK-293T cell lysate transfected with the pCMV6-ENTRY POLR3GL cDNA. IHC-P: Human kidney, pancreas carcinoma, endometrium adenocarcinoma, prostate, prostate carcinoma and lymph node tissue. ICC/IF: pCMV6-ENTRY POLR3GL cDNA transfected COS-7 cells.
General notes	Clone OT12F11 (formerly 2F11).

Properties

Form	Liquid
Storage instructions	Shipped at 4°C. Store at +4°C short term (1-2 weeks). Upon delivery aliquot. Store at -20°C long term. Avoid freeze / thaw cycle.
Storage buffer	pH: 7.30 Preservative: 0.02% Sodium azide

	Constituents: 50% Glycerol, 1% BSA, PBS
Purity	Affinity purified
Purification notes	Purified from cell culture supernatant by affinity chromatography.
Clonality	Monoclonal
Clone number	OT12F11
Isotype	IgG1

Applications

Our [Abpromise guarantee](#) covers the use of **ab180359** in the following tested applications.

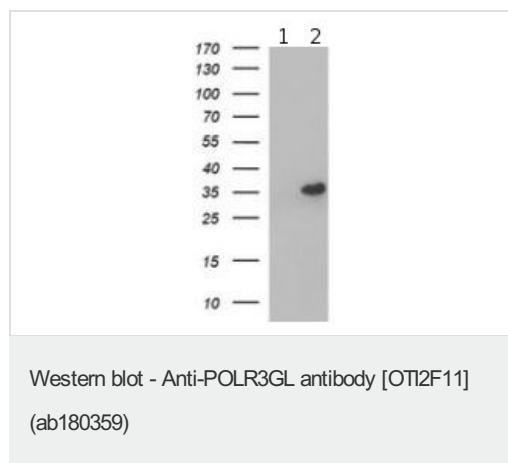
The application notes include recommended starting dilutions; optimal dilutions/concentrations should be determined by the end user.

Application	Abreviews	Notes
WB		1/4000. Predicted molecular weight: 25 kDa.
IHC-P		1/150. Perform heat mediated antigen retrieval before commencing with IHC staining protocol.
ICC/IF		1/100.

Target

Sequence similarities Belongs to the eukaryotic RPC7 RNA polymerase subunit family.

Images



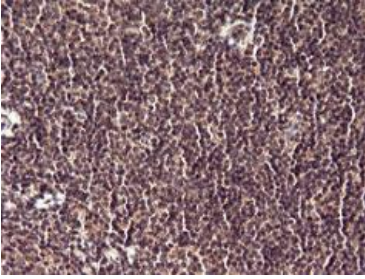
All lanes : Anti-POLR3GL antibody [OT12F11] (ab180359) at 1/4000 dilution

Lane 1 : HEK-293T (Human epithelial cell line from embryonic kidney transformed with large T antigen) cell lysate, transfected with pCMV6-ENTRY control cDNA

Lane 2 : HEK-293T cell lysate, transfected with pCMV6-ENTRY POLR3GL cDNA

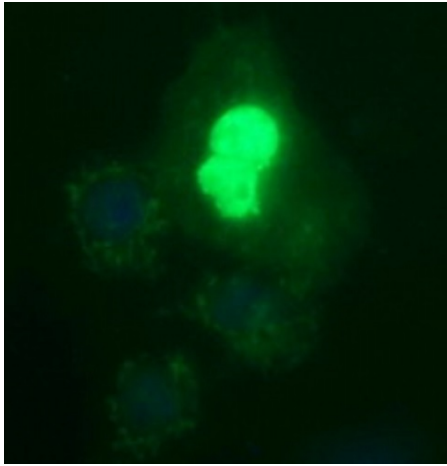
Lysates/proteins at 5 µg per lane.

Predicted band size: 25 kDa



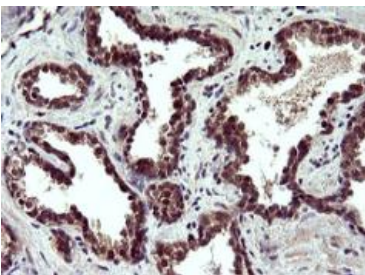
Immunohistochemistry (Formalin/PFA-fixed paraffin-embedded sections) - Anti-POLR3GL antibody [OT12F11] (ab180359)

Paraffin-embedded human lymph node tissue stained for POLR3GL with ab180359 at a 1/150 dilution in immunohistochemical analysis. Heat-induced epitope retrieval by 10 mM citric buffer, pH 6.0, 120°C for 3 minutes.



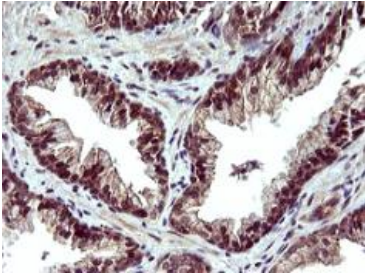
Immunocytochemistry/ Immunofluorescence - Anti-POLR3GL antibody [OT12F11] (ab180359)

pCMV6-ENTRY POLR3GL cDNA transfected COS-7 (African green monkey kidney fibroblast-like cell line) cells stained for POLR3GL using ab180359 at a 1/100 dilution in ICC/IF.



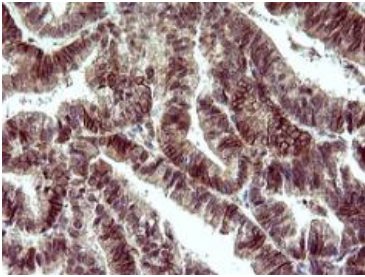
Immunohistochemistry (Formalin/PFA-fixed paraffin-embedded sections) - Anti-POLR3GL antibody [OT12F11] (ab180359)

Paraffin-embedded human prostate carcinoma tissue stained for POLR3GL with ab180359 at a 1/150 dilution in immunohistochemical analysis. Heat-induced epitope retrieval by 10 mM citric buffer, pH 6.0, 120°C for 3 minutes.



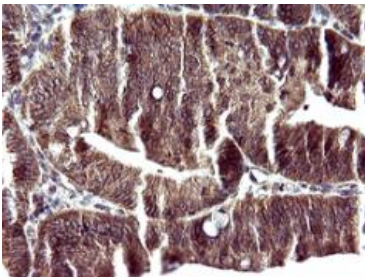
Immunohistochemistry (Formalin/PFA-fixed paraffin-embedded sections) - Anti-POLR3GL antibody [OT12F11] (ab180359)

Paraffin embedded human prostate tissue stained for POLR3GL with ab180359 at a 1/150 dilution in immunohistochemical analysis. Heat-induced epitope retrieval by 10 mM citric buffer, pH 6.0, 120°C for 3 minutes.



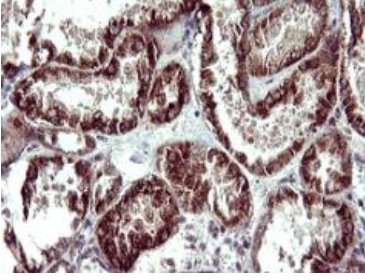
Immunohistochemistry (Formalin/PFA-fixed paraffin-embedded sections) - Anti-POLR3GL antibody [OT12F11] (ab180359)

Paraffin-embedded human endometrium adenocarcinoma tissue stained for POLR3GL with ab180359 at a 1/150 dilution in immunohistochemical analysis. Heat-induced epitope retrieval by 10 mM citric buffer, pH 6.0, 120°C for 3 minutes.



Immunohistochemistry (Formalin/PFA-fixed paraffin-embedded sections) - Anti-POLR3GL antibody [OT12F11] (ab180359)

Paraffin-embedded human pancreas carcinoma tissue stained for POLR3GL with ab180359 at a 1/150 dilution in immunohistochemical analysis. Heat-induced epitope retrieval by 10 mM citric buffer, pH 6.0, 120°C for 3 minutes.



Paraffin-embedded human kidney tissue stained for POLR3GL with ab180359 at a 1/150 dilution in immunohistochemical analysis. Heat-induced epitope retrieval by 10 mM citric buffer, pH 6.0, 120°C for 3 minutes.

Immunohistochemistry (Formalin/PFA-fixed paraffin-embedded sections) - Anti-POLR3GL antibody [OT12F11] (ab180359)

Please note: All products are "FOR RESEARCH USE ONLY AND ARE NOT INTENDED FOR DIAGNOSTIC OR THERAPEUTIC USE"

Our Abpromise to you: Quality guaranteed and expert technical support

- Replacement or refund for products not performing as stated on the datasheet
- Valid for 12 months from date of delivery
- Response to your inquiry within 24 hours
- We provide support in Chinese, English, French, German, Japanese and Spanish
- Extensive multi-media technical resources to help you
- We investigate all quality concerns to ensure our products perform to the highest standards

If the product does not perform as described on this datasheet, we will offer a refund or replacement. For full details of the Abpromise, please visit <https://www.abcam.com/abpromise> or contact our technical team.

Terms and conditions

- Guarantee only valid for products bought direct from Abcam or one of our authorized distributors