



Product datasheet

Anti-PON2 antibody ab230503

4 Images

Overview

Product name	Anti-PON2 antibody
Description	Rabbit polyclonal to PON2
Host species	Rabbit
Tested applications	Suitable for: IHC-P, WB, Flow Cyt
Species reactivity	Reacts with: Human
Immunogen	<p>Synthetic peptide corresponding to Human PON2 aa 79-107 (N terminal) conjugated to keyhole limpet haemocyanin.</p> <p>Sequence:</p> <p>PKDKPGGILMMDLKEEKPRARELRISRGFD</p> <p>Database link: Q15165</p> <p style="text-align: right;">  Run BLAST with  Run BLAST with </p>
Positive control	IHC-P: Human small intestine and brain cortex tissues. WB: HepG2 whole cell lysate (ab7900). Flow cytometry: K562 cells.
General notes	<p>Reproducibility is key to advancing scientific discovery and accelerating scientists' next breakthrough.</p> <p>Abcam is leading the way with our range of recombinant antibodies, knockout-validated antibodies and knockout cell lines, all of which support improved reproducibility.</p> <p>We are also planning to innovate the way in which we present recommended applications and species on our product datasheets, so that only applications & species that have been tested in our own labs, our suppliers or by selected trusted collaborators are covered by our Abpromise™ guarantee.</p> <p>In preparation for this, we have started to update the applications & species that this product is Abpromise guaranteed for.</p> <p>We are also updating the applications & species that this product has been “predicted to work with,” however this information is not covered by our Abpromise guarantee.</p> <p>Applications & species from publications and Abreviews that have not been tested in our own labs or in those of our suppliers are not covered by the Abpromise guarantee.</p> <p>Please check that this product meets your needs before purchasing. If you have any questions, special requirements or concerns, please send us an inquiry and/or contact our Support team ahead of purchase. Recommended alternatives for this product can be found below, as well as customer reviews and Q&As.</p>

Properties

Form	Liquid
Storage instructions	Shipped at 4°C. Store at +4°C short term (1-2 weeks). Upon delivery aliquot. Store at -20°C long term. Avoid freeze / thaw cycle.
Storage buffer	Preservative: 0.09% Sodium azide Constituent: PBS
Purity	Protein A purified
Clonality	Polyclonal
Isotype	IgG

Applications

Our [Abpromise guarantee](#) covers the use of **ab230503** in the following tested applications.

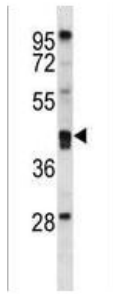
The application notes include recommended starting dilutions; optimal dilutions/concentrations should be determined by the end user.

Application	Abreviews	Notes
IHC-P		1/10 - 1/100. Perform heat mediated antigen retrieval before commencing with IHC staining protocol.
WB		1/1000. Predicted molecular weight: 39 kDa.
Flow Cyt		1/10 - 1/50.

Target

Function	Capable of hydrolyzing lactones and a number of aromatic carboxylic acid esters. Has antioxidant activity. Is not associated with high density lipoprotein. Prevents LDL lipid peroxidation, reverses the oxidation of mildly oxidized LDL, and inhibits the ability of MM-LDL to induce monocyte chemotaxis.
Tissue specificity	Widely expressed with highest expression in liver, lung, placenta, testis and heart.
Sequence similarities	Belongs to the paraoxonase family.
Post-translational modifications	The signal sequence is not cleaved.
Cellular localization	Membrane.

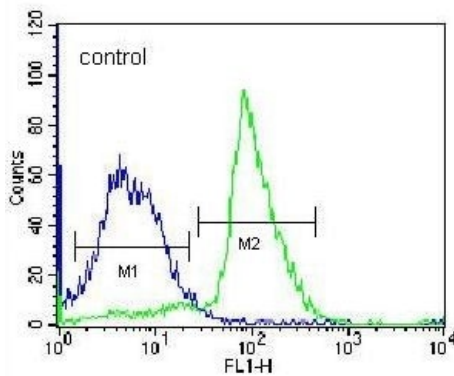
Images



Western blot - Anti-PON2 antibody (ab230503)

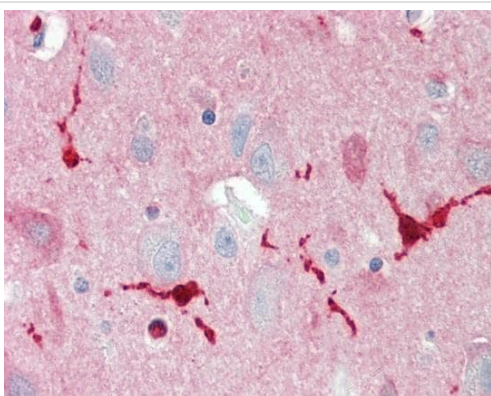
Anti-PON2 antibody (ab230503) at 1/1000 dilution + HepG2 (human liver hepatocellular carcinoma cell line) whole cell lysate at 35 μ g

Predicted band size: 39 kDa



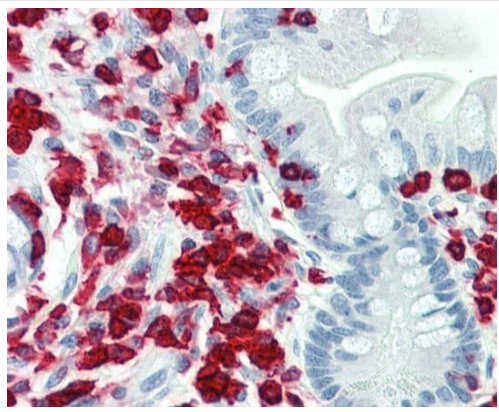
Flow Cytometry - Anti-PON2 antibody (ab230503)

Flow cytometric analysis of K562 (human chronic myelogenous leukemia cell line from bone marrow) cells labelling PON2 using ab230503 at 1/10 dilution (green) compared to the negative control (blue). FITC-conjugated donkey-anti-rabbit secondary antibodies were used for the analysis.



Immunohistochemistry (Formalin/PFA-fixed paraffin-embedded sections) - Anti-PON2 antibody (ab230503)

Formalin-fixed, paraformaldehyde-embedded human brain cortex tissue stained for PON2 using ab230503 at 1/10 dilution in immunohistochemical analysis.



Formalin-fixed, paraformaldehyde-embedded human small intestine tissue stained for PON2 using ab230503 at 1/10 dilution in immunohistochemical analysis.

Immunohistochemistry (Formalin/PFA-fixed paraffin-embedded sections) - Anti-PON2 antibody (ab230503)

Please note: All products are "FOR RESEARCH USE ONLY. NOT FOR USE IN DIAGNOSTIC PROCEDURES"

Our Abpromise to you: Quality guaranteed and expert technical support

- Replacement or refund for products not performing as stated on the datasheet
- Valid for 12 months from date of delivery
- Response to your inquiry within 24 hours
- We provide support in Chinese, English, French, German, Japanese and Spanish
- Extensive multi-media technical resources to help you
- We investigate all quality concerns to ensure our products perform to the highest standards

If the product does not perform as described on this datasheet, we will offer a refund or replacement. For full details of the Abpromise, please visit <https://www.abcam.com/abpromise> or contact our technical team.

Terms and conditions

- Guarantee only valid for products bought direct from Abcam or one of our authorized distributors