


Product datasheet

Anti-PP-T antibody [2E11] ab223355

3 Images

Overview

Product name	Anti-PP-T antibody [2E11]
Description	Mouse monoclonal [2E11] to PP-T
Host species	Mouse
Tested applications	Suitable for: ICC/IF, WB
Species reactivity	Reacts with: Human Predicted to work with: Mouse, Rat 
Immunogen	Recombinant full length protein corresponding to Human PP-T aa 2-499. Sequence: AMAEGERTECAEPPRDEPPADGALKRAEELKTQAND YFKAKDYENAIKFY SQAIELNPSNAIYYGNRSLAYLRTECYGYALGDATRAIEL DKKYIKGYR RAASNMALGKFRAALRDYETVVVKVPHDKDAKMKYQ ECNKIVKQKAHERA IAGDEHKRSVVDSLDIESMTIEDEYSGPKLEDGKVTISF MKELMQWYKDQ KKLHRKCAQILVQVKEVLSKLSLTVETTLKETEKITVC GDTHGQFYDLL NIFELNGLPSETNPYIFNGDFVDRGSFSVEVILTLFGFKL LYPDHFHLLR GNHETDNMNQYGFEGEVKAKYTAQMYELFSEVFEWL PLAQCINGKVLIM HGGLFSEDGVTLDDIRKIERNRQPPDSGPMCDLLWSD PQPQNGRSISKRG VSCQFGPDVTKAFLEENNLDYIIRSHEVKAEGYEVAHG GRCVTVFSAPNY CDQMGNKASYIHLQGSDLRPQFHQFTAVPHPNVKPM AYANTLLQLGMM

Database link: [P53041](#)

 [Run BLAST with](#)

 [Run BLAST with](#)

Positive control

WB: A431, Jurkat and HEK-293 cell lysates. ICC/IF: HEK-293 and HeLa cells.

Properties

Form	Liquid
Storage instructions	Shipped at 4°C. Store at +4°C short term (1-2 weeks). Upon delivery aliquot. Store at -20°C long term. Avoid freeze / thaw cycle.
Storage buffer	pH: 7.40 Preservative: 0.09% Sodium azide Constituents: 50% Glycerol, PBS
Purity	Protein G purified
Clonality	Monoclonal
Clone number	2E11
Isotype	IgG2a

Applications

Our [Abpromise guarantee](#) covers the use of **ab223355** in the following tested applications.

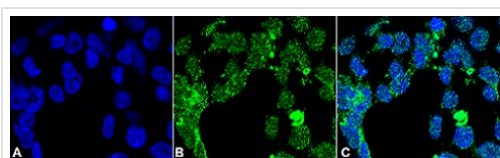
The application notes include recommended starting dilutions; optimal dilutions/concentrations should be determined by the end user.

Application	Abreviews	Notes
ICC/IF		1/100.
WB		1/1000. Detects a band of approximately 58 kDa (predicted molecular weight: 56.9 kDa).

Target

Function	May play a role in the regulation of RNA biogenesis and/or mitosis. In vitro, dephosphorylates serine residues of skeletal muscle phosphorylase and histone H1.
Tissue specificity	Ubiquitous.
Sequence similarities	Belongs to the PPP phosphatase family. PP-5 (PP-T) subfamily. Contains 3 TPR repeats.
Cellular localization	Nucleus. Cytoplasm. Predominantly nuclear. But also present in the cytoplasm.

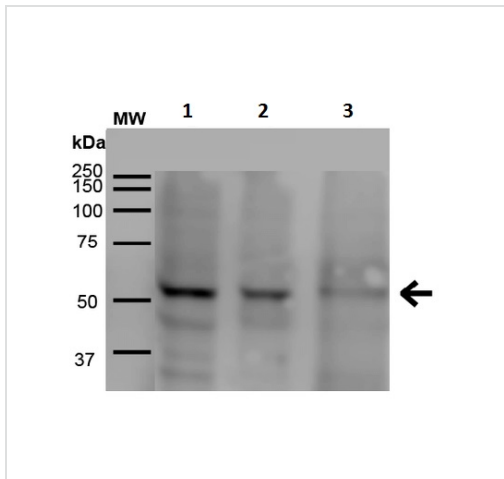
Images



Immunocytochemistry/ Immunofluorescence - Anti-PP-T antibody [2E11] (ab223355)

2% formaldehyde-fixed HEK-293 (human epithelial cell line from embryonic kidney) cells stained for PP-T (green) using ab223355 at 1/50 dilution in ICC/IF. Secondary: Goat Anti-Mouse Alexa Fluor 488 at 1/100 dilution for 1 hour at RT. Counterstain: DAPI (blue) nuclear stain.

(A) DAPI nuclear stain (B) ab223355 (C) Merge.



Western blot - Anti-PP-T antibody [2E11] (ab223355)

All lanes : Anti-PP-T antibody [2E11] (ab223355) at 1/500 dilution

Lane 1 : A431 (human epidermoid carcinoma cell line) cell lysate

Lane 2 : HEK-293 (human epithelial cell line from embryonic kidney) cell lysate

Lane 3 : Jurkat (human T cell leukemia cell line from peripheral blood) cell lysate

Lysates/proteins at 15 µg per lane.

Secondary

All lanes : Goat Anti-Mouse IgG HRP at 1/2000 dilution

Developed using the ECL technique.

Predicted band size: 56.9 kDa

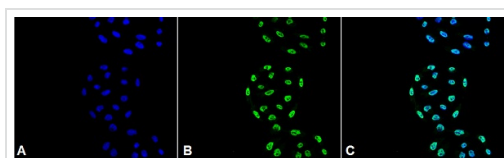
Observed band size: 58 kDa

[why is the actual band size different from the predicted?](#)

Exposure time: 6 minutes

Blocking buffer: 5% skim milk.

Primary and secondary antibodies were incubated for 1 hour at RT.



Immunocytochemistry/ Immunofluorescence - Anti-PP-T antibody [2E11] (ab223355)

4% formaldehyde-fixed HeLa (human epithelial cell line from cervix adenocarcinoma) cells stained for PP-T (green) using ab223355 at 1/100 dilution in ICC/IF. Secondary: Goat Anti-Mouse ATTO 488 at 1/100 dilution for 1 hour at RT. Counterstain: DAPI (blue) nuclear stain at 1/5000 for 5 min RT.

(A) DAPI nuclear stain (B) ab223355 (C) Merge.

Please note: All products are "FOR RESEARCH USE ONLY. NOT FOR USE IN DIAGNOSTIC PROCEDURES"

Our Abpromise to you: Quality guaranteed and expert technical support

- Replacement or refund for products not performing as stated on the datasheet
- Valid for 12 months from date of delivery
- Response to your inquiry within 24 hours
- We provide support in Chinese, English, French, German, Japanese and Spanish

- Extensive multi-media technical resources to help you
- We investigate all quality concerns to ensure our products perform to the highest standards

If the product does not perform as described on this datasheet, we will offer a refund or replacement. For full details of the Abpromise, please visit <https://www.abcam.com/abpromise> or contact our technical team.

Terms and conditions

- Guarantee only valid for products bought direct from Abcam or one of our authorized distributors