


Product datasheet

Anti-PPAP2A antibody ab198280

1 References 2 Images

Overview

Product name	Anti-PPAP2A antibody
Description	Rabbit polyclonal to PPAP2A
Host species	Rabbit
Tested applications	Suitable for: IHC-P, WB
Species reactivity	Reacts with: Human Predicted to work with: Mouse, Rat 
Immunogen	Synthetic peptide corresponding to Human PPAP2A (internal sequence). (NP_003702). Database link: O14494
Positive control	Human liver cancer tissue lysate; Human breast cancer tissue.

Properties

Form	Liquid
Storage instructions	Shipped at 4°C. Store at +4°C short term (1-2 weeks). Upon delivery aliquot. Store at -20°C long term. Avoid freeze / thaw cycle.
Storage buffer	pH: 7.3 Preservative: 0.05% Sodium azide Constituents: 50% Glycerol, 49% PBS
Purity	Immunogen affinity purified
Clonality	Polyclonal
Isotype	IgG

Applications

Our [Abpromise guarantee](#) covers the use of **ab198280** in the following tested applications.

The application notes include recommended starting dilutions; optimal dilutions/concentrations should be determined by the end user.

Application	Abreviews	Notes
IHC-P		1/25 - 1/100.

Application	Abreviews	Notes
WB		1/500 - 1/2000. Predicted molecular weight: 32 kDa.

Target

Function

Broad-specificity phosphohydrolase that dephosphorylates exogenous bioactive glycerolipids and sphingolipids. Catalyzes the conversion of phosphatidic acid (PA) to diacylglycerol (DG). Pivotal regulator of lysophosphatidic acid (LPA) signaling in the cardiovascular system. Major enzyme responsible of dephosphorylating LPA in platelets, which terminates signaling actions of LPA. May control circulating, and possibly also regulate localized, LPA levels resulting from platelet activation. It has little activity towards ceramide-1-phosphate (C-1-P) and sphingosine-1-phosphate (S-1-P). The relative catalytic efficiency is LPA > PA > S-1-P > C-1-P. It's down-regulation may contribute to the development of colon adenocarcinoma.

Tissue specificity

Ubiquitously expressed with highest expression found in prostate. Isoform 1 is predominant in kidney, lung, placenta and liver. Isoform 2 is predominant in heart and pancreas. Found to be down-regulated in colon adenocarcinomas.

Sequence similarities

Belongs to the PA-phosphatase related phosphoesterase family.

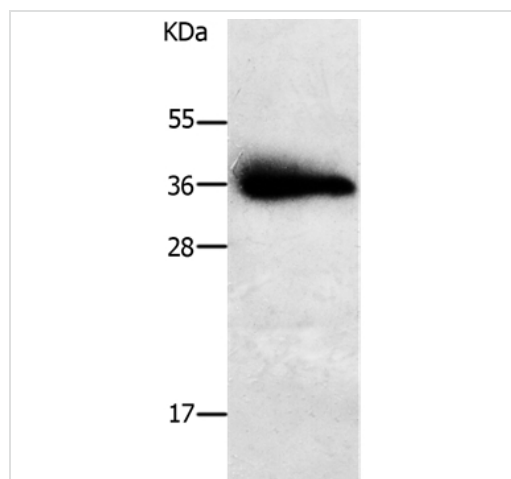
Post-translational modifications

N-glycosylated. Contains high-mannose oligosaccharides.

Cellular localization

Cell membrane.

Images



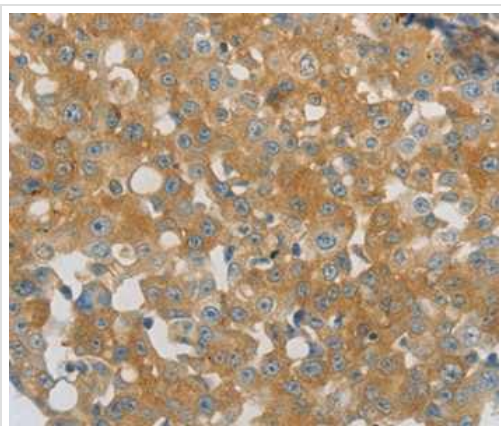
Anti-PPAP2A antibody (ab198280) at 1/650 dilution + Human liver cancer tissue lysate at 30 µg

Predicted band size: 32 kDa

Exposure time: 1 second

10% SDS-PAGE

Western blot - Anti-PPAP2A antibody (ab198280)



Immunohistochemical analysis of paraffin-embedded Human breast cancer tissue labeling PPAP2A with ab198280 at 1/40 dilution.

Immunohistochemistry (Formalin/PFA-fixed paraffin-embedded sections) - Anti-PPAP2A antibody (ab198280)

Please note: All products are "FOR RESEARCH USE ONLY. NOT FOR USE IN DIAGNOSTIC PROCEDURES"

Our Abpromise to you: Quality guaranteed and expert technical support

- Replacement or refund for products not performing as stated on the datasheet
- Valid for 12 months from date of delivery
- Response to your inquiry within 24 hours
- We provide support in Chinese, English, French, German, Japanese and Spanish
- Extensive multi-media technical resources to help you
- We investigate all quality concerns to ensure our products perform to the highest standards

If the product does not perform as described on this datasheet, we will offer a refund or replacement. For full details of the Abpromise, please visit <https://www.abcam.com/abpromise> or contact our technical team.

Terms and conditions

- Guarantee only valid for products bought direct from Abcam or one of our authorized distributors