


Product datasheet

Anti-PPAP2C antibody ab199266

2 Images

Overview

<b>Product name</b>	Anti-PPAP2C antibody
<b>Description</b>	Rabbit polyclonal to PPAP2C
<b>Host species</b>	Rabbit
<b>Tested applications</b>	<b>Suitable for:</b> IHC-P, WB
<b>Species reactivity</b>	<b>Reacts with:</b> Mouse, Human <b>Predicted to work with:</b> Rat 
<b>Immunogen</b>	Synthetic peptide corresponding to Human PPAP2C (internal sequence). NP_003703. Database link: <a href="#">O43688</a>
<b>Positive control</b>	Mouse trachea tissue lysate; Human colon cancer tissue.

Properties

<b>Form</b>	Liquid
<b>Storage instructions</b>	Shipped at 4°C. Store at +4°C short term (1-2 weeks). Upon delivery aliquot. Store at -20°C long term. Avoid freeze / thaw cycle.
<b>Storage buffer</b>	pH: 7.3 Preservative: 0.05% Sodium azide Constituents: 49% PBS, 50% Glycerol
<b>Purity</b>	Immunogen affinity purified
<b>Clonality</b>	Polyclonal
<b>Isotype</b>	IgG

Applications

Our [Abpromise guarantee](#) covers the use of **ab199266** in the following tested applications.

The application notes include recommended starting dilutions; optimal dilutions/concentrations should be determined by the end user.

Application	Abreviews	Notes
IHC-P		1/50 - 1/200.

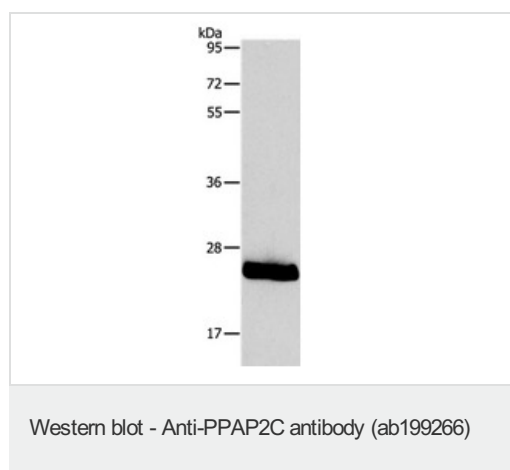
Application	Abreviews	Notes
WB		1/500 - 1/2000. Predicted molecular weight: 33 kDa.

## Target

**Relevance** PPAP2C belongs to the PA-phosphatase related phosphoesterase family. It catalyzes the conversion of phosphatidic acid (PA) to diacylglycerol (DG). In addition it hydrolyzes lysophosphatidic acid (LPA), ceramide-1-phosphate (C-1-P) and sphingosine-1-phosphate (S-1-P). The relative catalytic efficiency is PA > C-1-P > LPA > S-1-P. PPAP2C is found mainly in brain, pancreas and placenta.

**Cellular localization** Membrane; Multi-pass membrane protein.

## Images



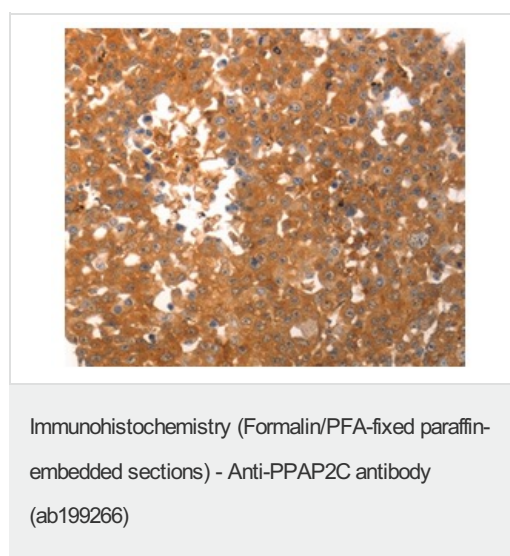
Anti-PPAP2C antibody (ab199266) at 1/800 dilution + Mouse trachea tissue lysate at 40 µg

Developed using the ECL technique.

**Predicted band size:** 33 kDa

**Exposure time:** 20 seconds

10% SDS-PAGE



Immunohistochemical analysis of paraffin-embedded Human colon cancer tissue labeling PPAP2C with ab199266 at 1/40 dilution.

## **Our Abpromise to you: Quality guaranteed and expert technical support**

---

- Replacement or refund for products not performing as stated on the datasheet
- Valid for 12 months from date of delivery
- Response to your inquiry within 24 hours
  
- We provide support in Chinese, English, French, German, Japanese and Spanish
- Extensive multi-media technical resources to help you
- We investigate all quality concerns to ensure our products perform to the highest standards

If the product does not perform as described on this datasheet, we will offer a refund or replacement. For full details of the Abpromise, please visit <https://www.abcam.com/abpromise> or contact our technical team.

## **Terms and conditions**

---

- Guarantee only valid for products bought direct from Abcam or one of our authorized distributors