

Product datasheet

Anti-PPP1A/PPP1CA antibody [1C11-C10-H5-E9]
 ab150782

4 Images

Overview

Product name	Anti-PPP1A/PPP1CA antibody [1C11-C10-H5-E9]
Description	Mouse monoclonal [1C11-C10-H5-E9] to PPP1A/PPP1CA
Host species	Mouse
Tested applications	Suitable for: WB, IHC-P, ICC/IF
Species reactivity	Reacts with: Mouse, Rat, Rabbit, Human, Pig
Immunogen	Recombinant fragment corresponding to Human PPP1A/PPP1CA. Expressed in E.coli Database link: NM_001008709
Positive control	A431, HeLa and Jurkat Whole cell lysates, Human breast cancer tissue, HeLa cells
General notes	This product was changed from ascites to tissue culture supernatant on 17.08.2018. Please note that the dilutions may need to be adjusted accordingly. If you have any questions, please do not hesitate to contact our scientific support team. This product was previously labelled as PPP1A

Properties

Form	Liquid
Storage instructions	Shipped at 4°C. Upon delivery aliquot and store at -20°C. Avoid freeze / thaw cycles.
Storage buffer	pH: 7.40 Preservative: 0.03% Proclin Constituent: 50% Glycerol
Purity	Concentrated Culture Supernatant
Clonality	Monoclonal
Clone number	1C11-C10-H5-E9
Isotype	IgG1

Applications

Our [Abpromise guarantee](#) covers the use of **ab150782** in the following tested applications.

The application notes include recommended starting dilutions; optimal dilutions/concentrations should be determined by the end user.

Application	Abreviews	Notes
WB		1/1000. Predicted molecular weight: 37 kDa.
IHC-P		1/500 - 1/1000.
ICC/IF		1/300.

Target

Function

Protein phosphatase 1 (PP1) is essential for cell division, and participates in the regulation of glycogen metabolism, muscle contractility and protein synthesis. Involved in regulation of ionic conductances and long-term synaptic plasticity. May play an important role in dephosphorylating substrates such as the postsynaptic density-associated Ca(2+)/calmodulin dependent protein kinase II. Component of the PTW/PP1 phosphatase complex, which plays a role in the control of chromatin structure and cell cycle progression during the transition from mitosis into interphase.

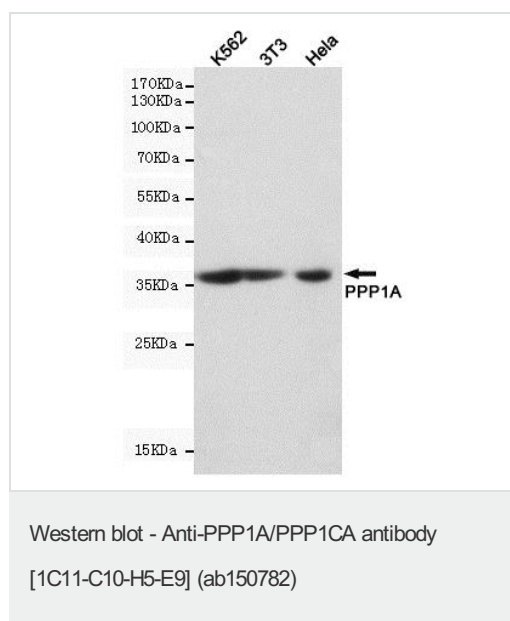
Sequence similarities

Belongs to the PPP phosphatase family. PP-1 subfamily.

Cellular localization

Cytoplasm. Nucleus. Nucleus > nucleoplasm. Nucleus > nucleolus. Primarily nuclear and largely excluded from the nucleolus. Highly mobile in cells and can be relocalized through interaction with targeting subunits. NOM1 plays a role in targeting this protein to the nucleolus. In the presence of PPP1R8 relocalizes from the nucleus to nuclear speckles.

Images



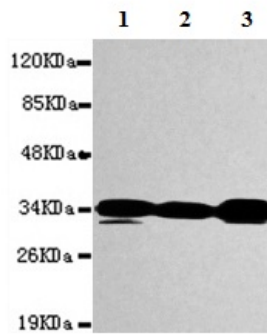
All lanes : Anti-PPP1A/PPP1CA antibody [1C11-C10-H5-E9] (ab150782) at 1/1000 dilution

Lane 1 : K562 cell lysates

Lane 2 : 3T3 cell lysates

Lane 3 : HeLa cell lysates

Predicted band size: 37 kDa



Western blot - Anti-PPP1A/PPP1CA antibody [1C11-C10-H5-E9] (ab150782)

All lanes : Anti-PPP1A/PPP1CA antibody [1C11-C10-H5-E9] (ab150782) at 1/1000 dilution

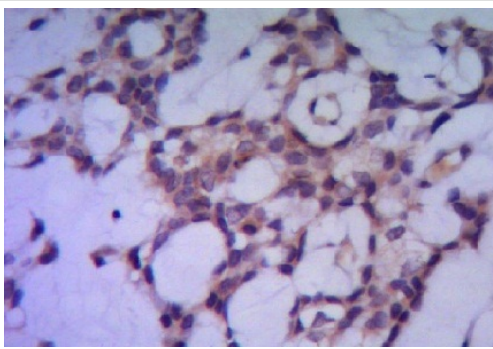
Lane 1 : A431 whole cell lysates

Lane 2 : Jurkat whole cell lysates

Lane 3 : HeLa whole cell lysates

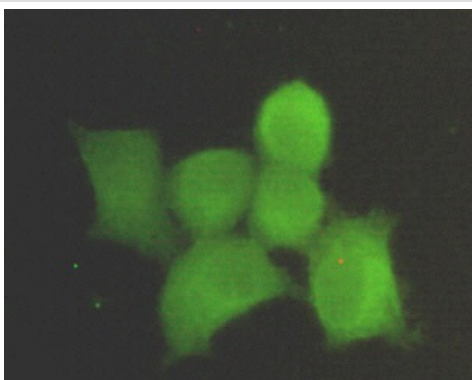
Predicted band size: 37 kDa

This image was produced with antibody produced in ascites.



Immunohistochemistry (Formalin/PFA-fixed paraffin-embedded sections) - Anti-PPP1A/PPP1CA antibody [1C11-C10-H5-E9] (ab150782)

Immunohistochemistry analysis of paraffin-embedded Human breast cancer tissue, labelling PPP1A/PPP1CA using ab150782 at a 1/500 dilution. This image was produced with antibody produced in ascites.



Immunocytochemistry/ Immunofluorescence - Anti-PPP1A/PPP1CA antibody [1C11-C10-H5-E9] (ab150782)

Immunocytochemistry analysis of HeLa cells, labelling PPP1A/PPP1CA using ab150782 at a 1/300 dilution. This image was produced with antibody produced in ascites.

Please note: All products are "FOR RESEARCH USE ONLY. NOT FOR USE IN DIAGNOSTIC PROCEDURES"

Our Abpromise to you: Quality guaranteed and expert technical support

- Replacement or refund for products not performing as stated on the datasheet
- Valid for 12 months from date of delivery
- Response to your inquiry within 24 hours

- We provide support in Chinese, English, French, German, Japanese and Spanish
- Extensive multi-media technical resources to help you
- We investigate all quality concerns to ensure our products perform to the highest standards

If the product does not perform as described on this datasheet, we will offer a refund or replacement. For full details of the Abpromise, please visit <https://www.abcam.com/abpromise> or contact our technical team.

Terms and conditions

- Guarantee only valid for products bought direct from Abcam or one of our authorized distributors