



Product datasheet

Anti-PPP1R12C antibody ab234811

2 Images

Overview

Product name	Anti-PPP1R12C antibody
Description	Rabbit polyclonal to PPP1R12C
Host species	Rabbit
Tested applications	Suitable for: IHC-P, ICC/IF
Species reactivity	Reacts with: Human
Immunogen	<p>Recombinant fragment corresponding to Human PPP1R12C aa 317-450. Sequence:</p> <p>DLRNQKEASQSRGQEPQAPSSSKHRRSSVCRLSSRE KISLQDLSKERRPG GAGGPPIQDEDEGEEGPTEPPPAEPRTLNGVSSPPH PSPKSPVQLEEAPF SRRFGLLKTGSSGALGPPERRTAEGAPGAGLQRS</p> <p>Database link: Q9BZL4</p> <p style="text-align: right;">  Run BLAST with  Run BLAST with </p>
Positive control	IHC-P: Human heart tissue. ICC/IF: HeLa cells.

Properties

Form	Liquid
Storage instructions	Shipped at 4°C. Store at +4°C short term (1-2 weeks). Upon delivery aliquot. Store at -20°C long term. Avoid freeze / thaw cycle.
Storage buffer	<p>pH: 7.4 Preservative: 0.03% Proclin Constituents: 50% Glycerol, PBS</p>
Purity	Protein G purified
Purification notes	Purity >95%.
Clonality	Polyclonal
Isotype	IgG

Applications

Applications

Our [Abpromise guarantee](#) covers the use of **ab234811** in the following tested applications.

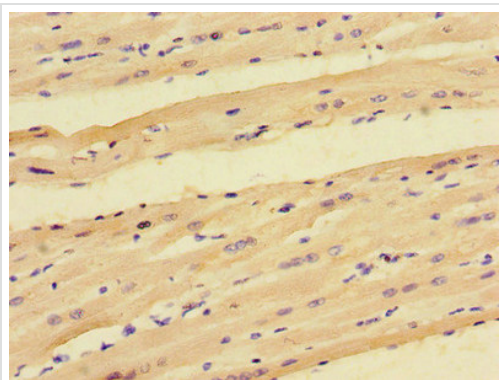
The application notes include recommended starting dilutions; optimal dilutions/concentrations should be determined by the end user.

Application	Abreviews	Notes
IHC-P		1/20 - 1/200.
ICC/IF		1/50 - 1/200.

Target

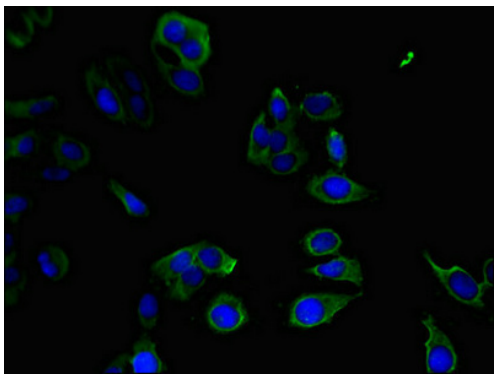
Function	Regulates myosin phosphatase activity.
Tissue specificity	Ubiquitously expressed. Highly expressed in heart.
Sequence similarities	Contains 4 ANK repeats.
Post-translational modifications	Phosphorylated upon DNA damage, probably by ATM or ATR.
Cellular localization	Cytoplasm. Along actomyosin filaments and stress fibers.

Images



Paraffin-embedded human heart tissue stained for PPP1R12C using ab234811 at 1/100 dilution in immunohistochemical analysis.

Immunohistochemistry (Formalin/PFA-fixed paraffin-embedded sections) - Anti-PPP1R12C antibody (ab234811)



Immunocytochemistry/ Immunofluorescence - Anti-PPP1R12C antibody (ab234811)

HeLa (human epithelial cell line from cervix adenocarcinoma) cells labeling PPP1R12C using ab234811 at 1/100 dilution in ICC/IF, followed by Alexa Fluor® 488-conjugated goat anti-rabbit IgG (H+L).

Please note: All products are "FOR RESEARCH USE ONLY. NOT FOR USE IN DIAGNOSTIC PROCEDURES"

Our Abpromise to you: Quality guaranteed and expert technical support

- Replacement or refund for products not performing as stated on the datasheet
- Valid for 12 months from date of delivery
- Response to your inquiry within 24 hours
- We provide support in Chinese, English, French, German, Japanese and Spanish
- Extensive multi-media technical resources to help you
- We investigate all quality concerns to ensure our products perform to the highest standards

If the product does not perform as described on this datasheet, we will offer a refund or replacement. For full details of the Abpromise, please visit <https://www.abcam.com/abpromise> or contact our technical team.

Terms and conditions

- Guarantee only valid for products bought direct from Abcam or one of our authorized distributors