




Product datasheet

Anti-PPP1R14B/PNG antibody ab188150

3 Images

Overview

Product name	Anti-PPP1R14B/PNG antibody
Description	Rabbit polyclonal to PPP1R14B/PNG
Host species	Rabbit
Tested applications	Suitable for: IHC-P
Species reactivity	Reacts with: Human Predicted to work with: Mouse, Rat, Pig 
Immunogen	Recombinant fragment corresponding to Human PPP1R14B/PNG aa 92-118. Sequence: ELEIDVDELDDMESDDARAARVKELLV Database link: Q96C90  Run BLAST with  Run BLAST with
Positive control	Human prostate, tonsil and liver cancer tissues.
General notes	This product was previously labelled as PPP1R14B

Properties

Form	Liquid
Storage instructions	Shipped at 4°C. Store at +4°C short term (1-2 weeks). Upon delivery aliquot. Store at -20°C long term. Avoid freeze / thaw cycle.
Storage buffer	pH: 7.2 Preservative: 0.02% Sodium azide Constituents: 40% Glycerol, 59% PBS
Purity	Immunogen affinity purified
Clonality	Polyclonal
Isotype	IgG

Applications

Our [Abpromise guarantee](#) covers the use of **ab188150** in the following tested applications.

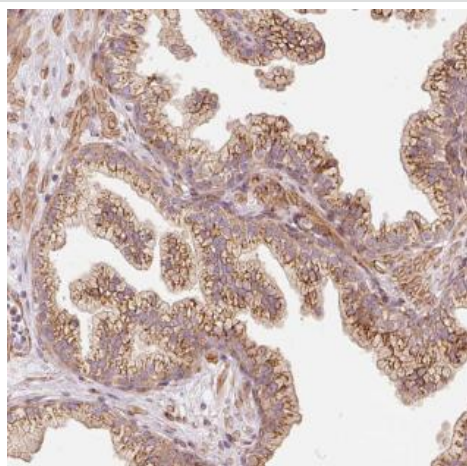
The application notes include recommended starting dilutions; optimal dilutions/concentrations should be determined by the end user.

Application	Abreviews	Notes
IHC-P		1/50 - 1/200. Perform heat mediated antigen retrieval with citrate buffer pH 6 before commencing with IHC staining protocol.

Target

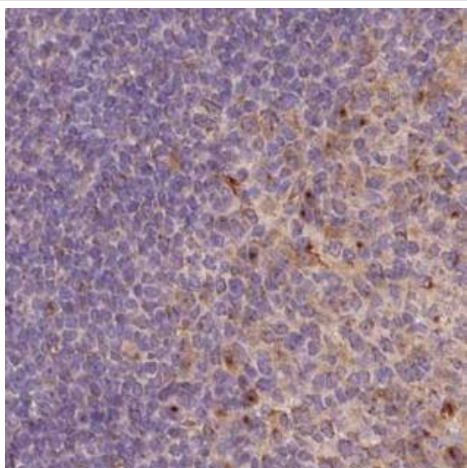
Function	Inhibitor of PPP1CA. Has over 50-fold higher inhibitory activity when phosphorylated.
Tissue specificity	Ubiquitous. Expressed at low levels.
Sequence similarities	Belongs to the PP1 inhibitor family.
Post-translational modifications	Phosphorylated primarily on Thr-57 by PKC (in vitro). An unknown Ser is also phosphorylated by PKC (in vitro).
Cellular localization	Cytoplasm.

Images



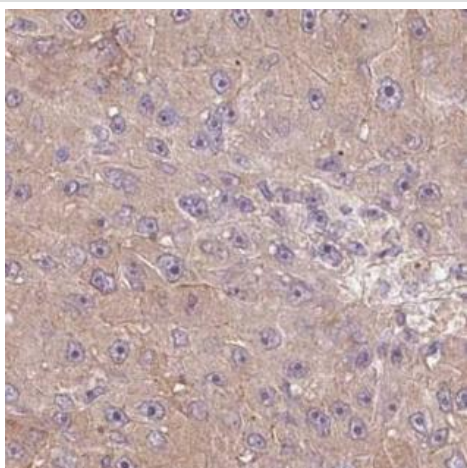
Immunohistochemical analysis of paraffin-embedded Human prostate tissue labeling PPP1R14B/PNG with ab188150 at 1/50 dilution.

Immunohistochemistry (Formalin/PFA-fixed paraffin-embedded sections) - Anti-PPP1R14B/PNG antibody (ab188150)



Immunohistochemical analysis of paraffin-embedded Human tonsil tissue labeling PPP1R14B/PNG with ab188150 at 1/50 dilution.

Immunohistochemistry (Formalin/PFA-fixed paraffin-embedded sections) - Anti-PPP1R14B/PNG antibody (ab188150)



Immunohistochemical analysis of paraffin-embedded Human liver cancer tissue labeling PPP1R14B/PNG with ab188150 at 1/50 dilution.

Immunohistochemistry (Formalin/PFA-fixed paraffin-embedded sections) - Anti-PPP1R14B/PNG antibody (ab188150)

Please note: All products are "FOR RESEARCH USE ONLY. NOT FOR USE IN DIAGNOSTIC PROCEDURES"

Our Abpromise to you: Quality guaranteed and expert technical support

- Replacement or refund for products not performing as stated on the datasheet
- Valid for 12 months from date of delivery
- Response to your inquiry within 24 hours

- We provide support in Chinese, English, French, German, Japanese and Spanish
- Extensive multi-media technical resources to help you
- We investigate all quality concerns to ensure our products perform to the highest standards

If the product does not perform as described on this datasheet, we will offer a refund or replacement. For full details of the Abpromise, please visit <https://www.abcam.com/abpromise> or contact our technical team.

Terms and conditions

- Guarantee only valid for products bought direct from Abcam or one of our authorized distributors