

## Product datasheet

# Anti-PPP1R3B antibody ab235049

4 Images

### Overview

<b>Product name</b>	Anti-PPP1R3B antibody
<b>Description</b>	Rabbit polyclonal to PPP1R3B
<b>Host species</b>	Rabbit
<b>Tested applications</b>	<b>Suitable for:</b> WB, IHC-P
<b>Species reactivity</b>	<b>Reacts with:</b> Mouse, Rat, Human <b>Predicted to work with:</b> Cow
<b>Immunogen</b>	<p>Recombinant full length protein corresponding to Human PPP1R3B aa 1-285. Sequence:</p> <p>MMAVDIEYRYNCMAPSLRQERFAFKISPKPSKPLRPCIQL SSKNEASGMV APAVQEKKVKRVSFADNQGLALTMVKVFSEFDDPLDM PFNITELLDNV SLTTAESESFVLDFSQPSADYLD FRNRLQADHVCLENCV LKDKAIAAGTVK VQNLAFEKTVKIRMTFDTWKS YTFPCQYVKD TYAGSDR DTFSFDISLPE KIQSYERMEFAVYYECNGQTYWDSNRGKNYRIIRAELKSTQ GMTKPHSGP DLGISFDQFGSPRC SYGLFPEWPSYLGYEKLG PYY</p> <p>Database link: <a href="#">Q86XI6</a></p> <p style="text-align: right;"> <a href="#">Run BLAST with</a>       <a href="#">Run BLAST with</a></p>
<b>Positive control</b>	WB: Rat heart and mouse liver tissue lysate. IHC-P: Human skeletal muscle and liver tissue.
<b>General notes</b>	<p>Reproducibility is key to advancing scientific discovery and accelerating scientists' next breakthrough.</p> <p>Abcam is leading the way with our range of recombinant antibodies, knockout-validated antibodies and knockout cell lines, all of which support improved reproducibility.</p> <p>We are also planning to innovate the way in which we present recommended applications and species on our product datasheets, so that only applications &amp; species that have been tested in our own labs, our suppliers or by selected trusted collaborators are covered by our Abpromise™ guarantee.</p> <p>In preparation for this, we have started to update the applications &amp; species that this product is</p>

Abpromise guaranteed for.

We are also updating the applications & species that this product has been “predicted to work with,” however this information is not covered by our Abpromise guarantee.

Applications & species from publications and Abreviews that have not been tested in our own labs or in those of our suppliers are not covered by the Abpromise guarantee.

Please check that this product meets your needs before purchasing. If you have any questions, special requirements or concerns, please send us an inquiry and/or contact our Support team ahead of purchase. Recommended alternatives for this product can be found below, as well as customer reviews and Q&As.

## Properties

---

<b>Form</b>	Liquid
<b>Storage instructions</b>	Shipped at 4°C. Store at +4°C short term (1-2 weeks). Upon delivery aliquot. Store at -20°C long term. Avoid freeze / thaw cycle.
<b>Storage buffer</b>	pH: 7.40 Constituents: 50% Glycerol (glycerin, glycerine), PBS, 0.03% Proclin 300
<b>Purity</b>	Protein G purified
<b>Purification notes</b>	Purity >95%.
<b>Clonality</b>	Polyclonal
<b>Isotype</b>	IgG

## Applications

---

Our [Abpromise guarantee](#) covers the use of **ab235049** in the following tested applications.

The application notes include recommended starting dilutions; optimal dilutions/concentrations should be determined by the end user.

Application	Abreviews	Notes
WB		1/500 - 1/5000.
IHC-P		1/20 - 1/200.

## Target

---

<b>Function</b>	Acts as a glycogen-targeting subunit for phosphatase PP1. Facilitates interaction of the PP1 with enzymes of the glycogen metabolism and regulates its activity. Suppresses the rate at which PP1 dephosphorylates (inactivates) glycogen phosphorylase and enhances the rate at which it activates glycogen synthase and therefore limits glycogen breakdown. Its activity is inhibited by PYGL, resulting in inhibition of the glycogen synthase and glycogen phosphorylase phosphatase activities of PP1. Dramatically increases basal and insulin-stimulated glycogen synthesis upon overexpression in hepatocytes.
<b>Tissue specificity</b>	Highly expressed in liver. Expressed moderately in skeletal muscle and myotubes (at protein level). Expressed predominantly in heart and skeletal muscle. Expressed moderately in liver.

Expressed weakly in placenta, lung and kidney.

### Sequence similarities

Contains 1 CBM21 (carbohydrate binding type-21) domain.

### Domain

The N-terminal region is required for binding to PP1, the central region is required for binding to glycogen and the C-terminal region is required for binding to PYGL.

## Images

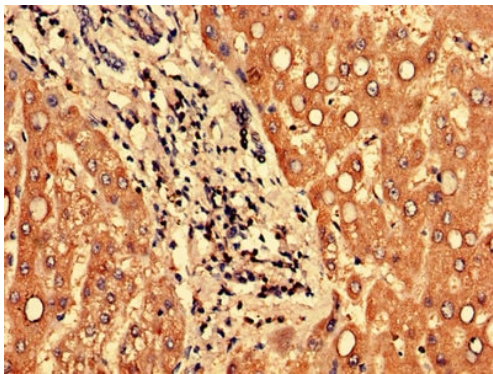


Western blot - Anti-PPP1R3B antibody (ab235049)

Anti-PPP1R3B antibody (ab235049) at 1/500 dilution + Mouse liver tissue lysate

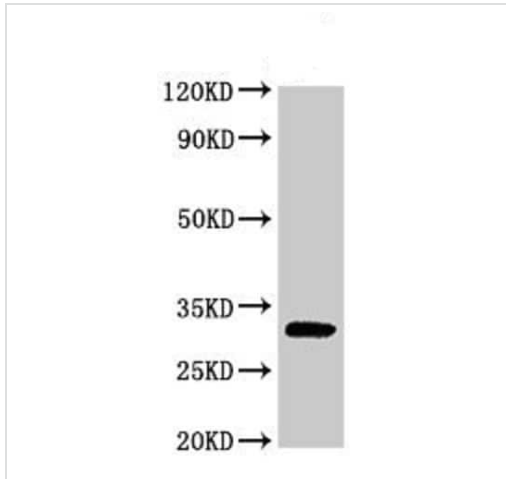
### Secondary

Goat polyclonal to rabbit at 1/10000 dilution



Immunohistochemistry (Formalin/PFA-fixed paraffin-embedded sections) - Anti-PPP1R3B antibody (ab235049)

Paraffin-embedded human liver tissue stained for PPP1R3B using ab235049 at 1/100 dilution in immunohistochemical analysis.

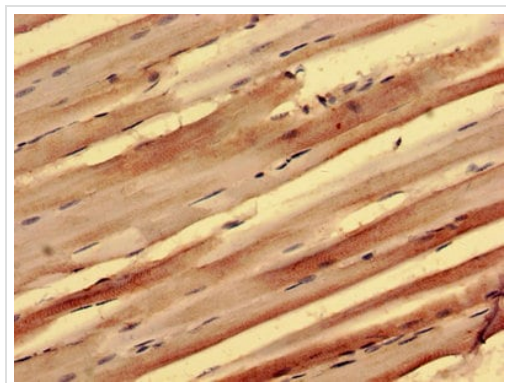


Western blot - Anti-PPP1R3B antibody (ab235049)

Anti-PPP1R3B antibody (ab235049) at 1/500 dilution + Rat heart tissue lysate

**Secondary**

Goat polyclonal to rabbit at 1/50000 dilution



Immunohistochemistry (Formalin/PFA-fixed paraffin-embedded sections) - Anti-PPP1R3B antibody (ab235049)

Paraffin-embedded human skeletal muscle tissue stained for PPP1R3B using ab235049 at 1/100 dilution in immunohistochemical analysis.

**Please note:** All products are "FOR RESEARCH USE ONLY. NOT FOR USE IN DIAGNOSTIC PROCEDURES"

**Our Abpromise to you: Quality guaranteed and expert technical support**

- Replacement or refund for products not performing as stated on the datasheet
- Valid for 12 months from date of delivery
- Response to your inquiry within 24 hours
- We provide support in Chinese, English, French, German, Japanese and Spanish
- Extensive multi-media technical resources to help you
- We investigate all quality concerns to ensure our products perform to the highest standards

If the product does not perform as described on this datasheet, we will offer a refund or replacement. For full details of the Abpromise, please visit <https://www.abcam.com/abpromise> or contact our technical team.

**Terms and conditions**

- Guarantee only valid for products bought direct from Abcam or one of our authorized distributors