

Product datasheet

Anti-PPP2CB antibody [EPR11786(B)] ab168371

KO VALIDATED Recombinant RabMAb

[5 Images](#)

Overview

Product name	Anti-PPP2CB antibody [EPR11786(B)]
Description	Rabbit monoclonal [EPR11786(B)] to PPP2CB
Host species	Rabbit
Tested applications	Suitable for: IP, ICC/IF, Flow Cyt, WB Unsuitable for: IHC-P
Species reactivity	Reacts with: Mouse, Rat, Human
Immunogen	Synthetic peptide corresponding to Human PPP2CB. Database link: P62714
Positive control	293T, HeLa, Human fetal brain, Human fetal heart and NIH 3T3 lysates; 293T and NIH3T3 cells.
General notes	

This product was previously labelled as PP2A beta

Our RabMAb[®] technology is a patented hybridoma-based technology for making rabbit monoclonal antibodies. For details on our patents, please refer to [RabMAb[®] patents](#).

This product is a [recombinant rabbit monoclonal antibody](#).

Properties

Form	Liquid
Storage instructions	Shipped at 4°C. Store at +4°C short term (1-2 weeks). Upon delivery aliquot. Store at -20°C long term. Avoid freeze / thaw cycle.
Storage buffer	Preservative: 0.01% Sodium azide Constituents: 9% PBS, 40% Glycerol, 0.05% BSA, 50% Tissue culture supernatant
Purity	Tissue culture supernatant
Clonality	Monoclonal
Clone number	EPR11786(B)
Isotype	IgG

Applications

Our [Abpromise guarantee](#) covers the use of **ab168371** in the following tested applications.

The application notes include recommended starting dilutions; optimal dilutions/concentrations should be determined by the end user.

Application	Abreviews	Notes
IP		1/10 - 1/100.
ICC/IF		1/50 - 1/100.
Flow Cyt		1/100 - 1/500. ab172730 - Rabbit monoclonal IgG, is suitable for use as an isotype control with this antibody.
WB		1/10000 - 1/50000. Detects a band of approximately 36 kDa (predicted molecular weight: 36 kDa).

Application notes Is unsuitable for IHC-P.

Target

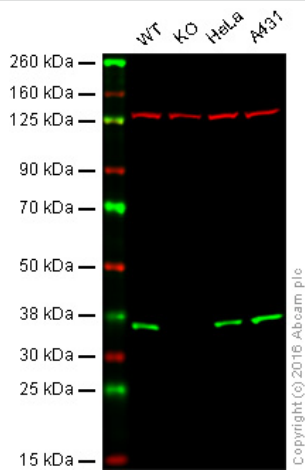
Function PP2A can modulate the activity of phosphorylase B kinase casein kinase 2, mitogen-stimulated S6 kinase, and MAP-2 kinase.

Sequence similarities Belongs to the PPP phosphatase family. PP-1 subfamily.

Post-translational modifications Reversibly methyl esterified on Leu-309. Carboxyl methylation may play a role in holoenzyme assembly. It varies during the cell cycle. Demethylated by PME1 (in vitro). Phosphorylation of either threonine (by autophosphorylation-activated protein kinase) or tyrosine results in inactivation of the phosphatase. Auto-dephosphorylation has been suggested as a mechanism for reactivation.

Cellular localization Cytoplasm. Nucleus. Chromosome > centromere. Cytoplasm > cytoskeleton > spindle pole. In prometaphase cells, but not in anaphase cells, localizes at centromeres. During mitosis, also found at spindle poles.

Images



Western blot - Anti-PPP2CB antibody
[EPR11786(B)] (ab168371)

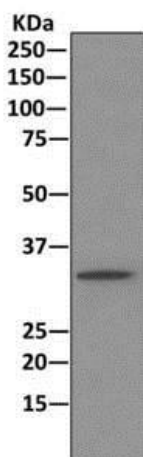
Lane 1: Wild-type HAP1 whole cell lysate (20 µg)

Lane 2: PPP2CB knockout HAP1 whole cell lysate (20 µg)

Lane 3: HeLa whole cell lysate (20 µg)

Lane 4: A431 whole cell lysate (20 µg)

ab168371 was shown to specifically react with PPP2CB in wild-type HAP1 cells. No band was observed when PPP2CB knockout samples were examined. Wild-type and PPP2CB knockout samples were subjected to SDS-PAGE. Ab168371 and [ab18058](#) (Mouse anti-Vinculin loading control) were incubated overnight at 4°C at 1/10,000 dilution and 1/10,000 dilution respectively. Blots were developed with Goat anti-Rabbit IgG H&L (IRDye® 800CW) preabsorbed [ab216773](#) and Goat anti-Mouse IgG H&L (IRDye® 680RD) preabsorbed [ab216776](#) secondary antibodies at 1/10,000 dilution for 1 hour at room temperature before imaging.



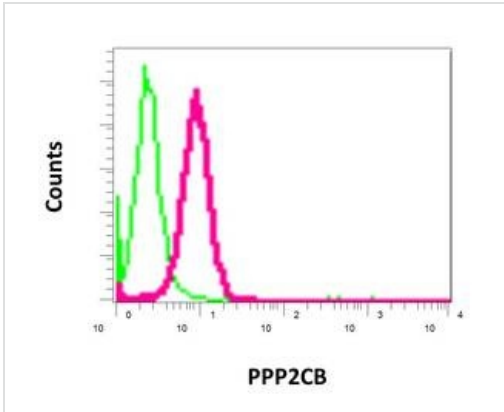
Immunoprecipitation - Anti-PPP2CB antibody
[EPR11786(B)] (ab168371)

Detection of PPP2CB by Western Blot of Immunoprecipitate.

293T cell lysate immunoprecipitated using ab168371 at 1/10 dilution.

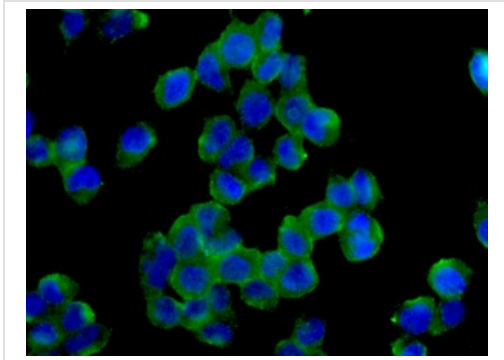
For WB detection ab168371 at 1/10000 dilution was used.

HRP-conjugated anti-rabbit IgG preferentially detecting the non-reduced form of rabbit IgG.



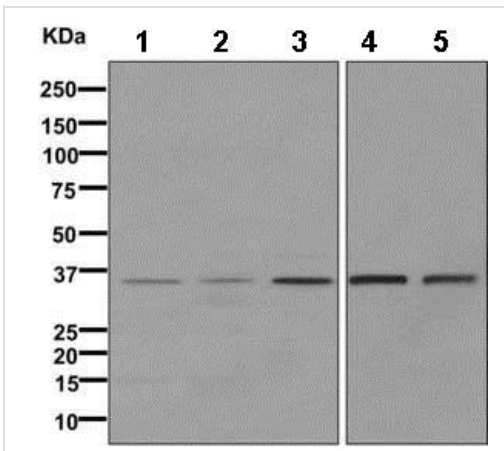
Flow Cytometry - Anti-PPP2CB antibody
[EPR11786(B)] (ab168371)

Flow Cytometric analysis of permeabilized NIH 3T3 cells labeling PPP2CB with ab168371 at 1/100 dilution (red) or a rabbit IgG (negative) (green).



Immunocytochemistry/ Immunofluorescence - Anti-PPP2CB antibody [EPR11786(B)] (ab168371)

Immunofluorescent analysis of 293T cells labeling PPP2CB with ab168371 at 1/50 dilution.



Western blot - Anti-PPP2CB antibody
[EPR11786(B)] (ab168371)

All lanes : Anti-PPP2CB antibody [EPR11786(B)] (ab168371) at 1/10000 dilution

Lane 1 : 293T lysate

Lane 2 : HeLa lysate

Lane 3 : Human fetal brain lysate

Lane 4 : Human fetal heart lysate

Lane 5 : NIH3T3 lysate

Lysates/proteins at 10 µg per lane.

Secondary

All lanes : Goat anti-rabbit HRP at 1/2000 dilution

Predicted band size: 36 kDa

Please note: All products are "FOR RESEARCH USE ONLY AND ARE NOT INTENDED FOR DIAGNOSTIC OR THERAPEUTIC USE"

Our Abpromise to you: Quality guaranteed and expert technical support

- Replacement or refund for products not performing as stated on the datasheet
- Valid for 12 months from date of delivery
- Response to your inquiry within 24 hours

- We provide support in Chinese, English, French, German, Japanese and Spanish
- Extensive multi-media technical resources to help you
- We investigate all quality concerns to ensure our products perform to the highest standards

If the product does not perform as described on this datasheet, we will offer a refund or replacement. For full details of the Abpromise, please visit <https://www.abcam.com/abpromise> or contact our technical team.

Terms and conditions

- Guarantee only valid for products bought direct from Abcam or one of our authorized distributors