


Product datasheet

Anti-PPP2R4 antibody ab87673

2 Images

Overview

Product name	Anti-PPP2R4 antibody
Description	Goat polyclonal to PPP2R4
Host species	Goat
Specificity	This antibody is expected to recognize all reported isoforms (NP_821068.1; NP_066954.2; NP_821070.1).
Tested applications	Suitable for: WB, IHC-P
Species reactivity	Reacts with: Mouse, Rat, Human Predicted to work with: Rabbit, Cow, Dog, Orangutan 
Immunogen	Synthetic peptide: C-GSLLPIHPVTSG , corresponding to C terminal amino acids 312-323 of Human PPP2R4 (NP_066954.2). Run BLAST with Run BLAST with
Positive control	Human, mouse or rat Liver lysate and HepG2 cell lysate.

Properties

Form	Liquid
Storage instructions	Shipped at 4°C. Upon delivery aliquot and store at -20°C. Avoid repeated freeze / thaw cycles.
Storage buffer	pH: 7.30 Preservative: 0.02% Sodium azide Constituents: 0.5% BSA, 0.5% Tris buffered saline
Purity	Immunogen affinity purified
Purification notes	ab87673 is purified from goat serum by ammonium sulphate precipitation followed by antigen affinity chromatography using the immunizing peptide.
Clonality	Polyclonal
Isotype	IgG

Applications

Our [Abpromise guarantee](#) covers the use of **ab87673** in the following tested applications.

The application notes include recommended starting dilutions; optimal dilutions/concentrations should be determined by the end user.

Application	Abreviews	Notes
WB		Use a concentration of 0.5 - 2 µg/ml. Detects a band of approximately 37 kDa (predicted molecular weight: 37 kDa).
IHC-P		Use a concentration of 3.75 µg/ml.

Target

Function

PPases accelerate the folding of proteins. It catalyzes the cis-trans isomerization of proline imidic peptide bonds in oligopeptides. Acts as a regulatory subunit for serine/threonine-protein phosphatase 2A (PP2A) modulating its activity or substrate specificity, probably by inducing a conformational change in the catalytic subunit, a proposed direct target of the PPlase. Can reactivate inactive phosphatase PP2A-phosphatase methylesterase complexes (PP2A(i)) in presence of ATP and Mg(2+) (By similarity). Reversibly stimulates the variable phosphotyrosyl phosphatase activity of PP2A core heterodimer PP2A(D) in presence of ATP and Mg(2+) (in vitro). The phosphotyrosyl phosphatase activity is dependent of an ATPase activity of the PP2A(D):PPP2R4 complex. Is involved in apoptosis; the function appears to be independent from PP2A.

Tissue specificity

Widely expressed.

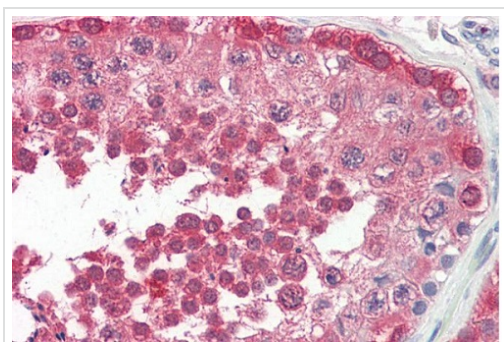
Sequence similarities

Belongs to the PTPA-type PPlase family.

Cellular localization

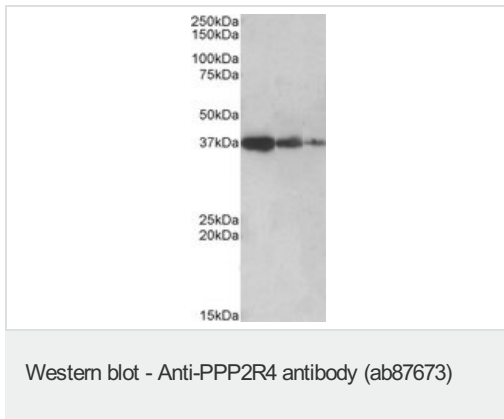
Cytoplasm. Nucleus.

Images



Ab87673 (3.75µg/ml) staining of paraffin embedded Human Testis. Steamed antigen retrieval with citrate buffer pH 6, AP-staining.

Immunohistochemistry (Formalin/PFA-fixed paraffin-embedded sections) - Anti-PPP2R4 antibody (ab87673)



All lanes : Anti-PPP2R4 antibody (ab87673) at 0.5 µg/ml

Lane 1 : Human Liver lysate in RIPA buffer

Lane 2 : Mouse Liver lysate in RIPA buffer

Lane 3 : Rat Liver lysate in RIPA buffer

Lysates/proteins at 35 µg per lane.

Developed using the ECL technique.

Predicted band size: 37 kDa

Observed band size: 37 kDa

Please note: All products are "FOR RESEARCH USE ONLY. NOT FOR USE IN DIAGNOSTIC PROCEDURES"

Our Abpromise to you: Quality guaranteed and expert technical support

- Replacement or refund for products not performing as stated on the datasheet
- Valid for 12 months from date of delivery
- Response to your inquiry within 24 hours
- We provide support in Chinese, English, French, German, Japanese and Spanish
- Extensive multi-media technical resources to help you
- We investigate all quality concerns to ensure our products perform to the highest standards

If the product does not perform as described on this datasheet, we will offer a refund or replacement. For full details of the Abpromise, please visit <https://www.abcam.com/abpromise> or contact our technical team.

Terms and conditions

- Guarantee only valid for products bought direct from Abcam or one of our authorized distributors