


Product datasheet

Anti-PPP2R5D antibody ab72303

★★★★☆ 1 Abreviews 2 Images

Overview

Product name	Anti-PPP2R5D antibody
Description	Rabbit polyclonal to PPP2R5D
Host species	Rabbit
Tested applications	Suitable for: WB, IP
Species reactivity	Reacts with: Human Predicted to work with: Horse, Guinea pig, Cow, Dog, Pig, Chimpanzee, Rhesus monkey, Opossum, Orangutan, Elephant 
Immunogen	Synthetic peptide corresponding to a region between residues 1 and 50 of human PPP2R5D (NP_006236.1).
Positive control	Whole cell lysate from HeLa cells.
General notes	<p>Reproducibility is key to advancing scientific discovery and accelerating scientists' next breakthrough.</p> <p>Abcam is leading the way with our range of recombinant antibodies, knockout-validated antibodies and knockout cell lines, all of which support improved reproducibility.</p> <p>We are also planning to innovate the way in which we present recommended applications and species on our product datasheets, so that only applications & species that have been tested in our own labs, our suppliers or by selected trusted collaborators are covered by our Abpromise™ guarantee.</p> <p>In preparation for this, we have started to update the applications & species that this product is Abpromise guaranteed for.</p> <p>We are also updating the applications & species that this product has been “predicted to work with,” however this information is not covered by our Abpromise guarantee.</p> <p>Applications & species from publications and Abreviews that have not been tested in our own labs or in those of our suppliers are not covered by the Abpromise guarantee.</p> <p>Please check that this product meets your needs before purchasing. If you have any questions, special requirements or concerns, please send us an inquiry and/or contact our Support team ahead of purchase. Recommended alternatives for this product can be found below, as well as customer reviews and Q&As.</p>

Properties

Form	Liquid
Storage instructions	Shipped at 4°C. Upon delivery aliquot and store at -20°C. Avoid freeze / thaw cycles.
Storage buffer	pH: 6.8 Preservative: 0.09% Sodium azide Constituents: 0.1% BSA, Tris buffered saline
Purity	Immunogen affinity purified
Clonality	Polyclonal
Isotype	IgG

Applications

Our [Abpromise guarantee](#) covers the use of **ab72303** in the following tested applications.

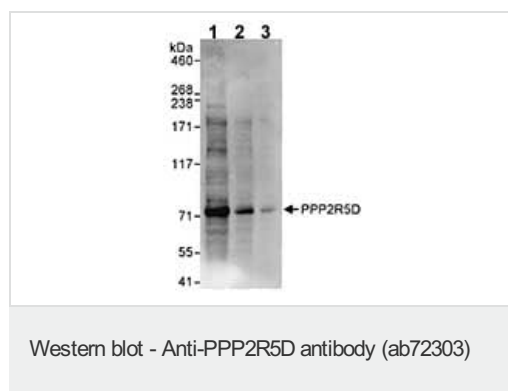
The application notes include recommended starting dilutions; optimal dilutions/concentrations should be determined by the end user.

Application	Abreviews	Notes
WB	★★★★☆	1/2000 - 1/10000. Detects a band of approximately 74 kDa (predicted molecular weight: 67 kDa).
IP		Use at 2-5 µg/mg of lysate.

Target

Function	The B regulatory subunit might modulate substrate selectivity and catalytic activity, and also might direct the localization of the catalytic enzyme to a particular subcellular compartment.
Tissue specificity	Isoform Delta-2 is widely expressed. Isoform Delta-1 is highly expressed in brain.
Sequence similarities	Belongs to the phosphatase 2A regulatory subunit B56 family.
Cellular localization	Cytoplasm. Nucleus. Nuclear in interphase, nuclear during mitosis.

Images



All lanes : Anti-PPP2R5D antibody (ab72303) at 0.04 µg/ml

Lane 1 : Whole cell lysate from HeLa cells at 50 µg

Lane 2 : Whole cell lysate from HeLa cells at 15 µg

Lane 3 : Whole cell lysate from HeLa cells at 5 µg

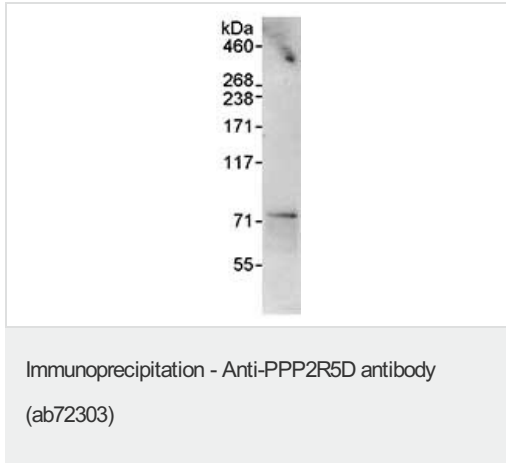
Developed using the ECL technique.

Predicted band size: 67 kDa

Observed band size: 74 kDa

[why is the actual band size different from the predicted?](#)

Exposure time: 10 seconds



Detection of Human PPP2R5D by Immunoprecipitation in whole cell lysate from HeLa cells (1 mg for IP, 20% of IP loaded), using ab72303 at 3 $\mu\text{g}/\text{mg}$ lysate for IP and at 0.1 $\mu\text{g}/\text{ml}$ for subsequent Western blot detection.

Detection: Chemiluminescence with an exposure time of 10 seconds. seconds

Please note: All products are "FOR RESEARCH USE ONLY. NOT FOR USE IN DIAGNOSTIC PROCEDURES"

Our Abpromise to you: Quality guaranteed and expert technical support

- Replacement or refund for products not performing as stated on the datasheet
- Valid for 12 months from date of delivery
- Response to your inquiry within 24 hours
- We provide support in Chinese, English, French, German, Japanese and Spanish
- Extensive multi-media technical resources to help you
- We investigate all quality concerns to ensure our products perform to the highest standards

If the product does not perform as described on this datasheet, we will offer a refund or replacement. For full details of the Abpromise, please visit <https://www.abcam.com/abpromise> or contact our technical team.

Terms and conditions

- Guarantee only valid for products bought direct from Abcam or one of our authorized distributors