

## Product datasheet

# Anti-PPP3CC antibody [EPR10601] ab154863

Recombinant RabMAb

[1 Reference](#) [1 Image](#)

### Overview

|                            |  |
|----------------------------|--|
| <b>Product name</b>        | Anti-PPP3CC antibody [EPR10601]  |
| <b>Description</b>         | Rabbit monoclonal [EPR10601] to PPP3CC   |
| <b>Host species</b>        | Rabbit   |
| <b>Tested applications</b> | <b>Suitable for:</b> WB<br><b>Unsuitable for:</b> Flow Cyt, ICC/IF, IHC-P or IP      |
| <b>Species reactivity</b>  | <b>Reacts with:</b> Mouse, Rat, Human  |
| <b>Immunogen</b>           | Synthetic peptide corresponding to residues within Human PPP3CC (Uniprot ID P48454). |
| <b>Positive control</b>    | Jurkat whole cell lysate ( <a href="#">ab7899</a> ); Human fetal brain tissue lysate |
| <b>General notes</b>       |  |

Our RabMAb<sup>®</sup> technology is a patented hybridoma-based technology for making rabbit monoclonal antibodies. For details on our patents, please refer to [RabMAb<sup>®</sup> patents](#).

This product is a [recombinant rabbit monoclonal antibody](#).

### Properties

|                             |   |
|-----------------------------|---|
| <b>Form</b>                 | Liquid  |
| <b>Storage instructions</b> | Shipped at 4°C. Upon delivery aliquot and store at -20°C. Avoid repeated freeze / thaw cycles.                    |
| <b>Storage buffer</b>       | Preservative: 0.01% Sodium azide<br>Constituents: 9% PBS, 40% Glycerol, 0.05% BSA, 50% Tissue culture supernatant |
| <b>Purity</b>               | Tissue culture supernatant  |
| <b>Clonality</b>            | Monoclonal  |
| <b>Clone number</b>         | EPR10601  |
| <b>Isotype</b>              | IgG   |

### Applications

Our [Abpromise guarantee](#) covers the use of **ab154863** in the following tested applications.

The application notes include recommended starting dilutions; optimal dilutions/concentrations should be determined by the end user.

| Application | Abreviews | Notes |
|-------------|-----------|-------|
|-------------|-----------|-------|

WB 1/1000 - 1/10000. Predicted molecular weight: 58 kDa.

**Application notes** Is unsuitable for Flow Cyt, ICC/IF, IHC-P or IP.

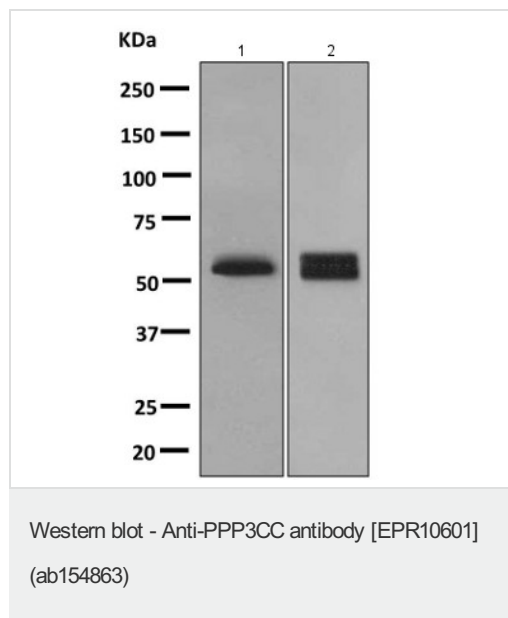
### Target

**Function** Calcium-dependent, calmodulin-stimulated protein phosphatase. This subunit may have a role in the calmodulin activation of calcineurin.

**Tissue specificity** Testis.

**Sequence similarities** Belongs to the PPP phosphatase family. PP-2B subfamily.

### Images



**All lanes :** Anti-PPP3CC antibody [EPR10601] (ab154863) at 1/1000 dilution

**Lane 1 :** Jurkat cell lysate

**Lane 2 :** Human fetal brain tissue lysate

Lysates/proteins at 10 µg per lane.

**Predicted band size:** 58 kDa

**Please note:** All products are "FOR RESEARCH USE ONLY AND ARE NOT INTENDED FOR DIAGNOSTIC OR THERAPEUTIC USE"

### Our Abpromise to you: Quality guaranteed and expert technical support

- Replacement or refund for products not performing as stated on the datasheet
- Valid for 12 months from date of delivery
- Response to your inquiry within 24 hours
- We provide support in Chinese, English, French, German, Japanese and Spanish
- Extensive multi-media technical resources to help you
- We investigate all quality concerns to ensure our products perform to the highest standards

If the product does not perform as described on this datasheet, we will offer a refund or replacement. For full details of the Abpromise,

please visit <https://www.abcam.com/abpromise> or contact our technical team.

## **Terms and conditions**

---

- Guarantee only valid for products bought direct from Abcam or one of our authorized distributors