

Product datasheet

Anti-PPP6C/Ppv antibody [EPR8764] ab131335

Recombinant RabMAb

★★★★★ 1 Abreviews 2 References 4 Images

Overview

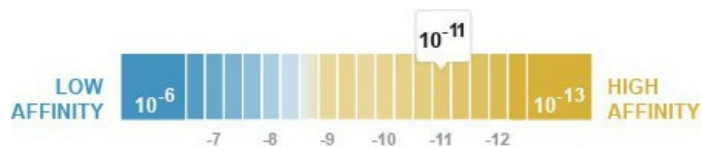
Product name	Anti-PPP6C/Ppv antibody [EPR8764]
Description	Rabbit monoclonal [EPR8764] to PPP6C/Ppv
Host species	Rabbit
Tested applications	Suitable for: WB, IP, Flow Cyt, ICC/IF Unsuitable for: IHC-P
Species reactivity	Reacts with: Mouse, Rat, Human
Immunogen	corresponding to Human PPP6C/Ppv aa 250-350 (C terminal). Database link: O00743
Positive control	WB: HeLa, fetal thymus and 293T and Jurkat whole cell lysate (ab7899). ICC/IF: HeLa cells. Flow Cyt: HeLa cells.
General notes	This product was previously labelled as PPP6C

Our RabMAb[®] technology is a patented hybridoma-based technology for making rabbit monoclonal antibodies. For details on our patents, please refer to [RabMAb[®] patents](#).

This product is a [recombinant rabbit monoclonal antibody](#).

Properties

Form	Liquid
Storage instructions	Shipped at 4°C. Store at +4°C short term (1-2 weeks). Upon delivery aliquot. Store at -20°C. Stable for 12 months at -20°C.
Dissociation constant (K_D)	K _D = 5.00 x 10 ⁻¹¹ M



[Learn more about K_D](#)

Storage buffer	pH: 7.20 Preservative: 0.01% Sodium azide
-----------------------	--

Constituents: 9% PBS, 40% Glycerol, 0.05% BSA, 50% Tissue culture supernatant

Purity	Tissue culture supernatant
Clonality	Monoclonal
Clone number	EPR8764
Isotype	IgG

Applications

Our [Abpromise guarantee](#) covers the use of **ab131335** in the following tested applications.

The application notes include recommended starting dilutions; optimal dilutions/concentrations should be determined by the end user.

Application	Abreviews	Notes
WB	★★★★★	1/1000 - 1/10000. Predicted molecular weight: 35 kDa.
IP		1/10 - 1/100.
Flow Cyt		1/280.
ICC/IF		1/100 - 1/250.

Application notes Is unsuitable for IHC-P.

Target

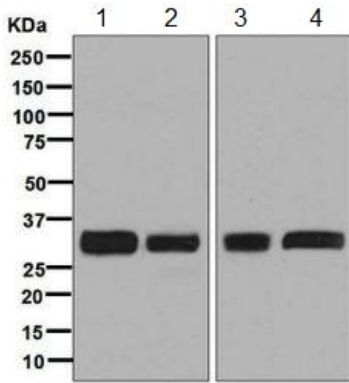
Function Catalytic subunit of protein phosphatase 6 (PP6). PP6 is a component of a signaling pathway regulating cell cycle progression in response to IL2 receptor stimulation. N-terminal domain restricts G1 to S phase progression in cancer cells, in part through control of cyclin D1. Downregulates MAP3K7 kinase activation of the IL1 signaling pathway by dephosphorylation of MAP3K7.

Tissue specificity Ubiquitously expressed in all tissues tested with highest expression levels in testis, heart, kidney, brain, stomach, liver and skeletal muscle and lowest in placenta, lung colon and spleen.

Sequence similarities Belongs to the PPP phosphatase family. PP-6 (PP-V) subfamily.

Cellular localization Cytoplasm.

Images



Western blot - Anti-PPP6C/Ppv antibody [EPR8764] (ab131335)

All lanes : Anti-PPP6C/Ppv antibody [EPR8764] (ab131335) at 1/1000 dilution

Lane 1 : HeLa cell lysate

Lane 2 : Fetal thymus lysate

Lane 3 : 293T cell lysate

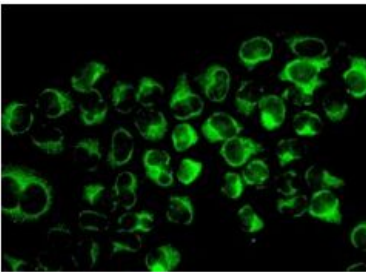
Lane 4 : Jurkat cell lysate

Lysates/proteins at 10 µg per lane.

Secondary

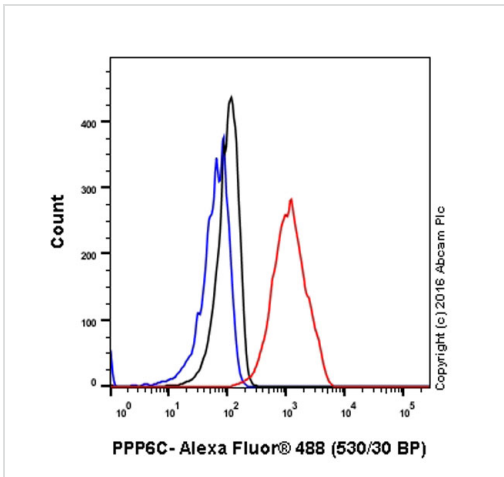
All lanes : Goat anti-rabbit HRP at 1/2000 dilution

Predicted band size: 35 kDa



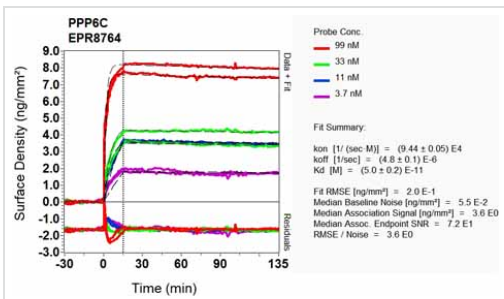
Immunocytochemistry/ Immunofluorescence - Anti-PPP6C/Ppv antibody [EPR8764] (ab131335)

Immunofluorescent analysis of HeLa cells labelling PPP6C/Ppv with ab131335 at 1/100 dilution.



Flow Cytometry analysis of HeLa cells labelling PPP6C/Ppv with purified ab131335 at a dilution of 1/280 (red). Cells were fixed with 4% paraformaldehyde and permeabilized with 90% methanol. An Alexa Fluor® 488-conjugated goat anti-rabbit IgG (1/2000) was used as the secondary antibody. Black - Isotype control, rabbit monoclonal IgG. Blue - Unlabelled control, cells without incubation with primary and secondary antibodies.

Flow Cytometry - Anti-PPP6C/Ppv antibody
[EPR8764] (ab131335)



Equilibrium dissociation constant (K_D)

Learn more about K_D

[Click here to learn more about \$K_D\$](#)

Other - Anti-PPP6C/Ppv antibody [EPR8764]
(ab131335)

Please note: All products are "FOR RESEARCH USE ONLY. NOT FOR USE IN DIAGNOSTIC PROCEDURES"

Our Abpromise to you: Quality guaranteed and expert technical support

- Replacement or refund for products not performing as stated on the datasheet
- Valid for 12 months from date of delivery
- Response to your inquiry within 24 hours
- We provide support in Chinese, English, French, German, Japanese and Spanish

- Extensive multi-media technical resources to help you
- We investigate all quality concerns to ensure our products perform to the highest standards

If the product does not perform as described on this datasheet, we will offer a refund or replacement. For full details of the Abpromise, please visit <https://www.abcam.com/abpromise> or contact our technical team.

Terms and conditions

- Guarantee only valid for products bought direct from Abcam or one of our authorized distributors