

Product datasheet

Anti-PPWD1 antibody ab154040

3 Images

Overview

Product name	Anti-PPWD1 antibody
Description	Rabbit polyclonal to PPWD1
Host species	Rabbit
Tested applications	Suitable for: WB, ICC/IF
Species reactivity	Reacts with: Rat, Human
Immunogen	Recombinant fragment, corresponding to a region within amino acids 1-224 of Human PPWD1 (UniProt: Q96BP3).
Positive control	Rat bone marrow, THP1, K562 and 293T whole cell lysates; HeLa cells;
General notes	<p>The Life Science industry has been in the grips of a reproducibility crisis for a number of years. Abcam is leading the way in addressing this with our range of recombinant monoclonal antibodies and knockout edited cell lines for gold-standard validation. Please check that this product meets your needs before purchasing.</p> <p>If you have any questions, special requirements or concerns, please send us an inquiry and/or contact our Support team ahead of purchase. Recommended alternatives for this product can be found below, along with publications, customer reviews and Q&As</p>

Properties

Form	Liquid
Storage instructions	Shipped at 4°C. Upon delivery aliquot. Store at -20°C or -80°C. Avoid freeze / thaw cycle.
Storage buffer	pH: 7.00 Preservative: 0.01% Thimerosal (merthiolate) Constituents: 78.99% PBS, 1% BSA, 20% Glycerol (glycerin, glycerine)
Purity	Immunogen affinity purified
Clonality	Polyclonal
Isotype	IgG

Applications

The Abpromise guarantee Our [Abpromise guarantee](#) covers the use of ab154040 in the following tested applications.

The application notes include recommended starting dilutions; optimal dilutions/concentrations should be determined by the end user.

Application	Abreviews	Notes
WB		1/500 - 1/3000. Predicted molecular weight: 74 kDa.
ICC/IF		1/100 - 1/1000.

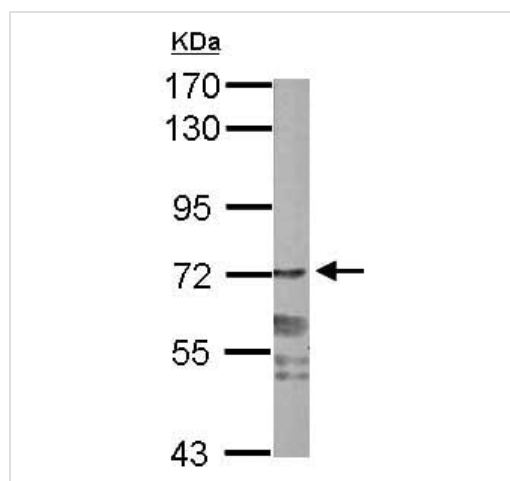
Target

Function Putative peptidylprolyl isomerase (PPIase). PPIases accelerate the folding of proteins. It catalyzes the cis-trans isomerization of proline imidic peptide bonds in oligopeptides. May be involved in pre-mRNA splicing.

Sequence similarities Belongs to the cyclophilin-type PPIase family. PPIL1 subfamily.
Contains 1 PPIase cyclophilin-type domain.
Contains 4 WD repeats.

Cellular localization Nucleus. Associated with spliceosomal complexes.

Images

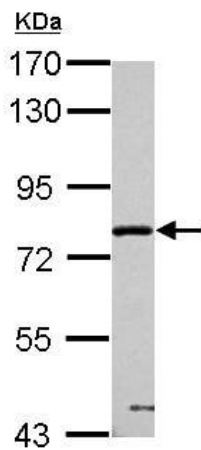


Anti-PPWD1 antibody (ab154040) at 1/1000 dilution + Rat bone marrow whole cell lysate. at 50 μ g

Predicted band size: 74 kDa

7.5% SDS PAGE

Western blot - Anti-PPWD1 antibody (ab154040)

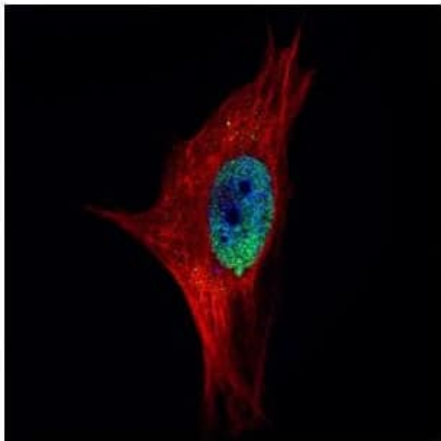


Western blot - Anti-PPWD1 antibody (ab154040)

Anti-PPWD1 antibody (ab154040) at 1/2000 dilution + 293T whole cell lysate at 30 µg

Predicted band size: 74 kDa

7.5% SDS PAGE



Immunocytochemistry/ Immunofluorescence - Anti-PPWD1 antibody (ab154040)

Confocal immunofluorescence analysis of paraformaldehyde-fixed HeLa cells, labeling PPWD1 with ab154040 at 1/500 dilution. Alpha-tubulin filaments are labeled red.

Please note: All products are "FOR RESEARCH USE ONLY. NOT FOR USE IN DIAGNOSTIC PROCEDURES"

Our Abpromise to you: Quality guaranteed and expert technical support

- Replacement or refund for products not performing as stated on the datasheet

- Valid for 12 months from date of delivery
- Response to your inquiry within 24 hours
- We provide support in Chinese, English, French, German, Japanese and Spanish
- Extensive multi-media technical resources to help you
- We investigate all quality concerns to ensure our products perform to the highest standards

If the product does not perform as described on this datasheet, we will offer a refund or replacement. For full details of the Abpromise, please visit <https://www.abcam.com/abpromise> or contact our technical team.

Terms and conditions

- Guarantee only valid for products bought direct from Abcam or one of our authorized distributors