

## Product datasheet

# Anti-PRDM16 antibody ab85874

1 Image

### Overview

---

<b>Product name</b>	Anti-PRDM16 antibody
<b>Description</b>	Rabbit polyclonal to PRDM16
<b>Host species</b>	Rabbit
<b>Tested applications</b>	<b>Suitable for:</b> WB
<b>Species reactivity</b>	<b>Reacts with:</b> Human
<b>Immunogen</b>	Synthetic peptide corresponding to Human PRDM16 aa 1250 to the C-terminus (C terminal) conjugated to keyhole limpet haemocyanin. (Peptide available as <a href="#">ab95842</a> )
<b>Positive control</b>	This antibody gave a positive signal in the following whole cell lysates: HeLa; Jurkat; HEK293.
<b>General notes</b>	<p>Reproducibility is key to advancing scientific discovery and accelerating scientists' next breakthrough.</p> <p>Abcam is leading the way with our range of recombinant antibodies, knockout-validated antibodies and knockout cell lines, all of which support improved reproducibility.</p> <p>We are also planning to innovate the way in which we present recommended applications and species on our product datasheets, so that only applications &amp; species that have been tested in our own labs, our suppliers or by selected trusted collaborators are covered by our Abpromise™ guarantee.</p> <p>In preparation for this, we have started to update the applications &amp; species that this product is Abpromise guaranteed for.</p> <p>We are also updating the applications &amp; species that this product has been "predicted to work with," however this information is not covered by our Abpromise guarantee.</p> <p>Applications &amp; species from publications and Abreviews that have not been tested in our own labs or in those of our suppliers are not covered by the Abpromise guarantee.</p> <p>Please check that this product meets your needs before purchasing. If you have any questions, special requirements or concerns, please send us an inquiry and/or contact our Support team ahead of purchase. Recommended alternatives for this product can be found below, as well as customer reviews and Q&amp;As.</p>

### Properties

---

<b>Form</b>	Liquid
<b>Storage instructions</b>	Shipped at 4°C. Store at +4°C short term (1-2 weeks). Upon delivery aliquot. Store at -20°C or -80°C. Avoid freeze / thaw cycle.
<b>Storage buffer</b>	pH: 7.40 Preservative: 0.02% Sodium azide Constituent: PBS
	Batches of this product that have a concentration < 1mg/ml may have BSA added as a stabilising agent. If you would like information about the formulation of a specific lot, please contact our scientific support team who will be happy to help.
<b>Purity</b>	Immunogen affinity purified
<b>Clonality</b>	Polyclonal
<b>Isotype</b>	IgG

## Applications

Our [Abpromise guarantee](#) covers the use of **ab85874** in the following tested applications.

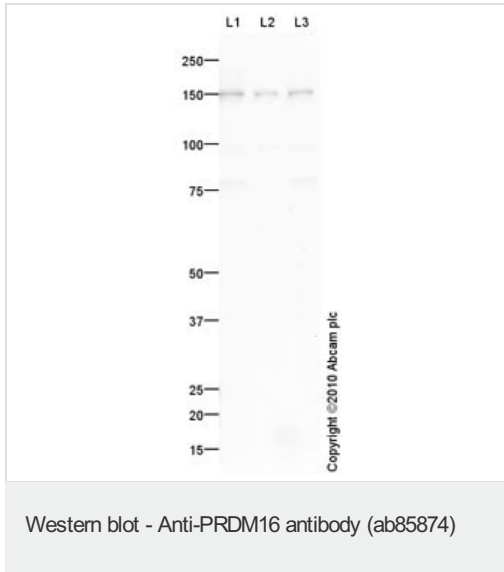
The application notes include recommended starting dilutions; optimal dilutions/concentrations should be determined by the end user.

Application	Abreviews	Notes
WB		Use a concentration of 1 µg/ml. Detects a band of approximately 150 kDa (predicted molecular weight: 140 kDa).

## Target

<b>Function</b>	Binds DNA and functions as a transcriptional regulator. Functions in the differentiation of brown adipose tissue (BAT) which is specialized in dissipating chemical energy in the form of heat in response to cold or excess feeding while white adipose tissue (WAT) is specialized in the storage of excess energy and the control of systemic metabolism. Together with CEBPB, regulates the differentiation of myoblastic precursors into brown adipose cells. Functions also as a repressor of TGF-beta signaling. Isoform 4 may regulate granulocytes differentiation.
<b>Tissue specificity</b>	Expressed in uterus and kidney.
<b>Involvement in disease</b>	Note=A chromosomal aberration involving PRDM16 is found in myelodysplastic syndrome (MDS) and acute myeloid leukemia (AML). Reciprocal translocation t(1;3)(p36;q21). Isoform 4 is specifically expressed in adult T-cell leukemia.
<b>Sequence similarities</b>	Contains 10 C2H2-type zinc fingers. Contains 1 SET domain.
<b>Cellular localization</b>	Nucleus.

## Images



**All lanes** : Anti-PRDM16 antibody (ab85874) at 1 µg/ml

**Lane 1** : HeLa (Human epithelial carcinoma cell line) Whole Cell Lysate

**Lane 2** : Jurkat (Human T cell lymphoblast-like cell line) Whole Cell Lysate

**Lane 3** : HEK293 (Human embryonic kidney cell line) Whole Cell Lysate

Lysates/proteins at 10 µg/ml per lane.

### Secondary

**All lanes** : Goat polyclonal to Rabbit IgG - H&L - Pre-Adsorbed (HRP) at 1/3000 dilution

Developed using the ECL technique.

Performed under reducing conditions.

**Predicted band size:** 140 kDa

**Observed band size:** 150 kDa

[why is the actual band size different from the predicted?](#)

**Exposure time:** 12 minutes

**Please note:** All products are "FOR RESEARCH USE ONLY. NOT FOR USE IN DIAGNOSTIC PROCEDURES"

### Our Abpromise to you: Quality guaranteed and expert technical support

- Replacement or refund for products not performing as stated on the datasheet
- Valid for 12 months from date of delivery
- Response to your inquiry within 24 hours
- We provide support in Chinese, English, French, German, Japanese and Spanish
- Extensive multi-media technical resources to help you
- We investigate all quality concerns to ensure our products perform to the highest standards

If the product does not perform as described on this datasheet, we will offer a refund or replacement. For full details of the Abpromise, please visit <https://www.abcam.com/abpromise> or contact our technical team.

### Terms and conditions

- Guarantee only valid for products bought direct from Abcam or one of our authorized distributors