




Product datasheet

Anti-Presenilin 2/AD5 antibody ab106351

1 References 4 Images

Overview

Product name	Anti-Presenilin 2/AD5 antibody
Description	Rabbit polyclonal to Presenilin 2/AD5
Host species	Rabbit
Specificity	ab106351 does not cross react with other proteins.
Tested applications	Suitable for: WB, IHC-P
Species reactivity	Reacts with: Mouse, Rat, Human Predicted to work with: Cow, Pig 
Immunogen	Synthetic peptide corresponding to Human Presenilin 2/AD5 aa 319-334 (internal sequence). Sequence: YDPEMEEDSYDSFGEP Database link: P49810  Run BLAST with  Run BLAST with
Positive control	Rat brain tissue lysate; MCF7, HeLa, SMMC, CEM whole cell lysates; Rat brain tissue.
General notes	Previously labelled as Presenilin 2. Reproducibility is key to advancing scientific discovery and accelerating scientists' next breakthrough. Abcam is leading the way with our range of recombinant antibodies, knockout-validated antibodies and knockout cell lines, all of which support improved reproducibility. We are also planning to innovate the way in which we present recommended applications and species on our product datasheets, so that only applications & species that have been tested in our own labs, our suppliers or by selected trusted collaborators are covered by our Abpromise™ guarantee. In preparation for this, we have started to update the applications & species that this product is Abpromise guaranteed for. We are also updating the applications & species that this product has been "predicted to work with," however this information is not covered by our Abpromise guarantee. Applications & species from publications and Abreviews that have not been tested in our own labs or in those of our suppliers are not covered by the Abpromise guarantee. Please check that this product meets your needs before purchasing. If you have any questions, special requirements or concerns, please send us an inquiry and/or contact our Support team

ahead of purchase. Recommended alternatives for this product can be found below, as well as customer reviews and Q&As.

Properties

Form	Liquid
Storage instructions	Shipped at 4°C. Upon delivery aliquot and store at -20°C. Avoid repeated freeze / thaw cycles.
Storage buffer	Preservatives: 0.025% Thimerosal (merthiolate), 0.025% Sodium azide Constituents: 2.5% BSA, 0.45% Sodium chloride, 0.1% Dibasic monohydrogen sodium phosphate
Purity	Immunogen affinity purified
Clonality	Polyclonal
Isotype	IgG

Applications

Our [Abpromise guarantee](#) covers the use of **ab106351** in the following tested applications.

The application notes include recommended starting dilutions; optimal dilutions/concentrations should be determined by the end user.

Application	Abreviews	Notes
WB		Use a concentration of 0.1 - 0.5 µg/ml. Predicted molecular weight: 50 kDa.
IHC-P		Use a concentration of 0.5 - 1 µg/ml.

Target

Function	Probable catalytic subunit of the gamma-secretase complex, an endoprotease complex that catalyzes the intramembrane cleavage of integral membrane proteins such as Notch receptors and APP (beta-amyloid precursor protein). Requires the other members of the gamma-secretase complex to have a protease activity. May play a role in intracellular signaling and gene expression or in linking chromatin to the nuclear membrane. May function in the cytoplasmic partitioning of proteins.
Tissue specificity	Isoform 1 is seen in the placenta, skeletal muscle and heart while isoform 2 is seen in the heart, brain, placenta, liver, skeletal muscle and kidney.
Involvement in disease	Defects in PSEN2 are the cause of Alzheimer disease type 4 (AD4) [MIM:606889]. AD is an autosomal dominant Alzheimer disease. Alzheimer disease is a neurodegenerative disorder characterized by progressive dementia, loss of cognitive abilities, and deposition of fibrillar amyloid proteins as intraneuronal neurofibrillary tangles, extracellular amyloid plaques and vascular amyloid deposits. The major constituent of these plaques is the neurotoxic amyloid-beta-APP 40-42 peptide (s), derived proteolytically from the transmembrane precursor protein APP by sequential secretase processing. The cytotoxic C-terminal fragments (CTFs) and the caspase-cleaved products such as C31 derived from APP, are also implicated in neuronal death. Defects in PSEN2 are the cause of cardiomyopathy dilated type 1V (CMD1V) [MIM:613697]. It is a disorder characterized by ventricular dilation and impaired systolic function, resulting in

congestive heart failure and arrhythmia. Patients are at risk of premature death.

Sequence similarities

Belongs to the peptidase A22A family.

Domain

The PAL motif is required for normal active site conformation.

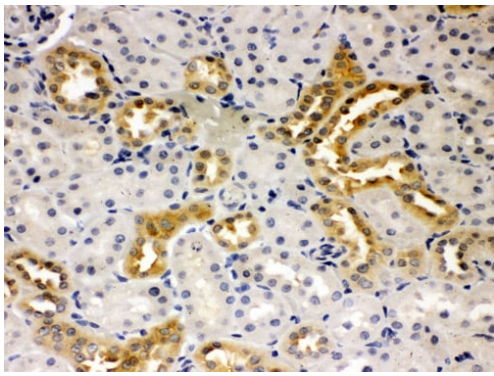
Post-translational modifications

Heterogeneous proteolytic processing generates N-terminal and C-terminal fragments.
Phosphorylated on serine residues.

Cellular localization

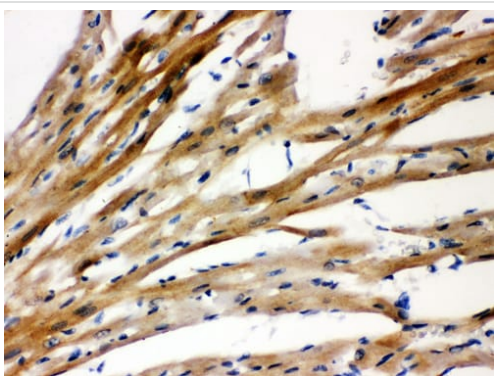
Endoplasmic reticulum membrane. Golgi apparatus membrane.

Images



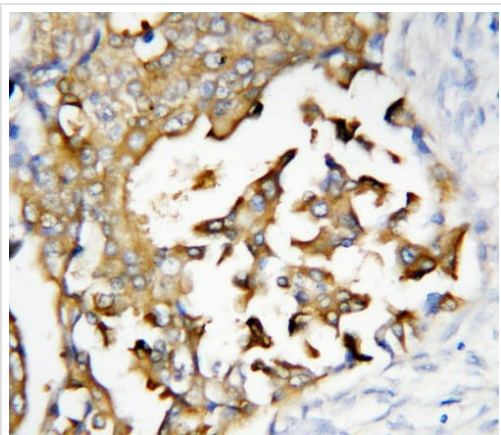
Immunohistochemical analysis of paraffin-embedded Rat Kidney tissue labeling Presenilin 2 / AD5 with ab106351.

Immunohistochemistry paraffin embedded sections -
Anti-Presenilin 2/AD5 antibody (ab106351)



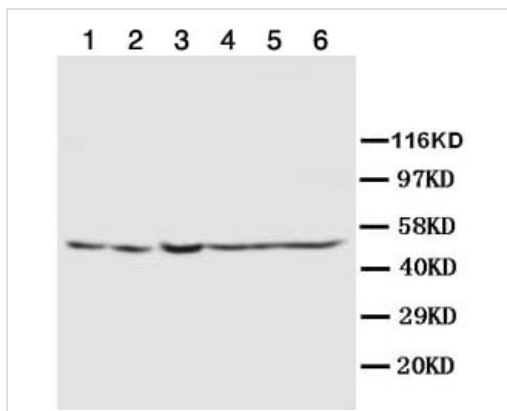
Immunohistochemical analysis of paraffin-embedded Rat Cardiac Muscle tissue labeling Presenilin 2 / AD5 with ab106351.

Immunohistochemistry paraffin embedded sections -
Anti-Presenilin 2/AD5 antibody (ab106351)



Immunohistochemistry paraffin embedded sections -
Anti-Presenilin 2/AD5 antibody (ab106351)

Immunohistochemical analysis of paraffin-embedded
Human Mammary Cancer tissue labeling Presenilin 2 / AD5 with
ab106351.



Western blot - Anti-Presenilin 2/AD5 antibody
(ab106351)

All lanes : Anti-Presenilin 2/AD5 antibody (ab106351) at 1 µg/ml

Lanes 1-2 : Rat brain tissue lysate

Lane 3 : MCF7 whole cell lysate

Lane 4 : HeLa whole cell lysate

Lane 5 : SMMC whole cell lysate

Lane 6 : CEM whole cell lysate

Predicted band size: 50 kDa

Please note: All products are "FOR RESEARCH USE ONLY. NOT FOR USE IN DIAGNOSTIC PROCEDURES"

Our Abpromise to you: Quality guaranteed and expert technical support

- Replacement or refund for products not performing as stated on the datasheet
- Valid for 12 months from date of delivery
- Response to your inquiry within 24 hours

- We provide support in Chinese, English, French, German, Japanese and Spanish
- Extensive multi-media technical resources to help you
- We investigate all quality concerns to ensure our products perform to the highest standards

If the product does not perform as described on this datasheet, we will offer a refund or replacement. For full details of the Abpromise, please visit <https://www.abcam.com/abpromise> or contact our technical team.

Terms and conditions

- Guarantee only valid for products bought direct from Abcam or one of our authorized distributors